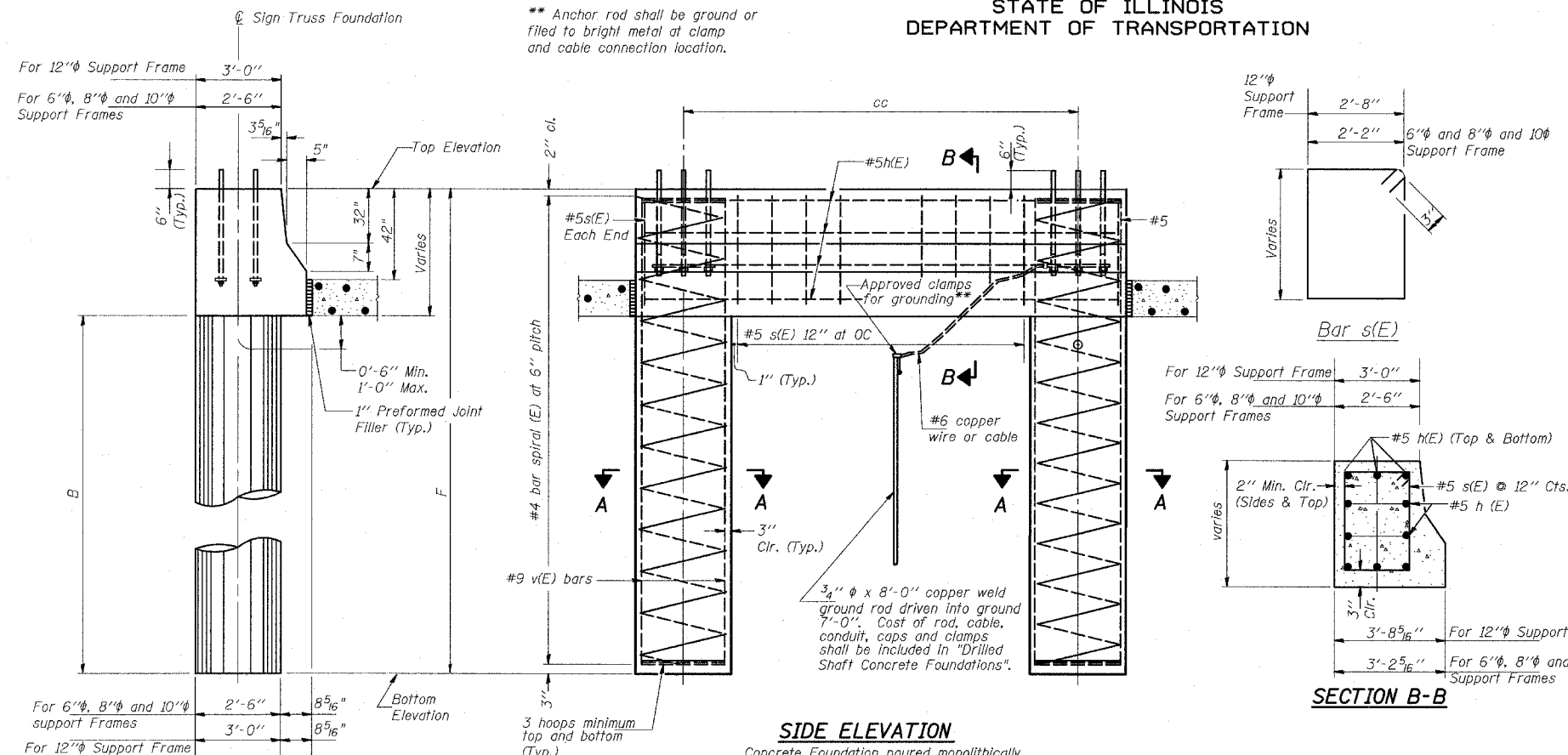


STATE OF ILLINOIS
DEPARTMENT OF TRANSPORTATION

** Anchor rod shall be ground or filed to bright metal at clamp and cable connection location.



SIDE ELEVATION

Concrete Foundation poured monolithically with no construction joint.

NOTES:

The foundation dimensions shown are based on the presence of mostly cohesive soils with an average Unconfined Compressive Strength (Q_u) of at least 1.25 tsf, which must be determined by previous soil investigations at the jobsite. When other conditions are indicated, the boring data will be included in the plans and the foundation dimensions shown will be the result of site specific designs.

If the conditions encountered are different than those indicated, the Contractor shall notify the Engineer to determine if the foundation dimensions need to be modified. If dimensions "B" or "F" are revised by more than 12" by the Contractor, "as-built" plans shall be prepared and submitted to the District Bureau of Operations for future reference.

No sonotubes or decomposable forms shall be used below the lower conduit entrances. Permanent metal forms or other shielding may not be left in place below that elevation without the Engineer's written permission.

Concrete shall be placed monolithically, without construction joints.

Backfill shall be placed per Article 502 of Standard Specification and prior to erection of support column.

A normal surface finish followed by a Bridge Seat Sealer application will be required on concrete surfaces above the lowest elevation 6" below finished ground line. Cost included in "Drilled Shaft Concrete Foundations".

Face of median support foundation shall match dimensions of permanent barrier wall F shape.

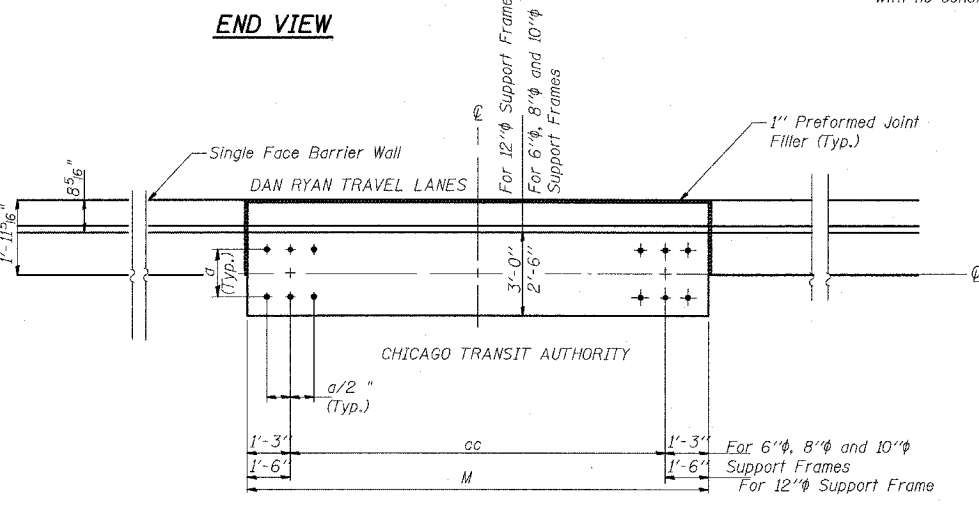
Refer to the lighting plans for location and orientation of the conduit.

BAR LIST - EACH FOUNDATION

Bar	Number	Size	Length	Shape
h(E)	10	#5	M less 4"	—
s(E)	Varies	#5	Varies	□
v(E)	16	#9	F less 0'-5"	—

#4(E) bar spiral - see Side Elevation

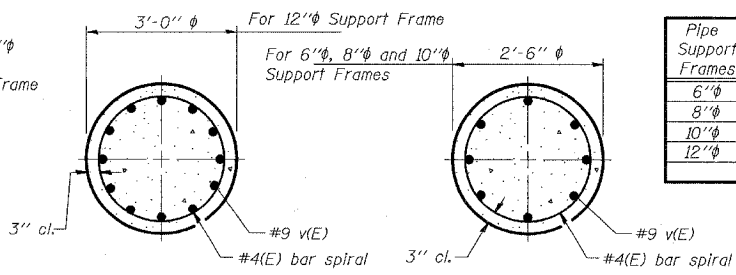
SECTION B-B



END VIEW

Structure Number	Station	Left Foundation		Right Foundation		Class SI Concrete (Cu. Yds.)
		Elevation Top	Elevation Bottom	Elevation Top	Elevation Bottom	
ISO16I094R062.8	2204+66	1.06	-20.11	16.5'	21.17'	11.30
ISO16I094R062.2	2242+70	6.24	-18.93	20.5'	25.17'	12.76
ISO16I094R061.7	2264+34	-0.31	-25.48	20.5'	25.17'	12.76
ISO16I094R061.3	2282+42	-2.66	-25.33	18'	22.67'	16.37
ISO16I094R061.2	2290+90	-5.48	-30.65	20.5'	25.17'	12.76
ISO16I094R060.2	2344+44	-1.49	-26.66	20.5'	25.17'	12.76

MODIFIED BY CTE ENGINEERS, INC. FROM OS4-MED
MODIFIED BY T.Y. LIN INTERNATIONAL FOR BARRIER WALL DIMENSIONS,
ANCHOR ROD



SECTION A-A

Pipe Support Frames	cc	M	a	a/2
6"φ	7'-0"	9'-6"	0'-11"	5 1/2"
8"φ	7'-6"	10'-0"	1'-1 1/2"	6 3/4"
10"φ	8'-3"	10'-9"	1'-3"	7 1/2"
12"φ	9'-0"	12'-0"	1'-6"	9"

DESIGNED	20
CHECKED	EXAMINED
DRAWN	PASSED
CHECKED	

REVISIONS	
NAME	DATE

ILLINOIS DEPARTMENT OF TRANSPORTATION
F.A.I. 94 (DAN RYAN EXPRESSWAY)
OVERHEAD SIGN STRUCTURES
MEDIAN SUPPORT FOUNDATION DETAILS
SINGLE FACE MEDIAN SUPPORT FOUNDATION

SCALE: AS NOTED
DATE: MARCH 18, 2005

DRAWN BY: AMB
CHECKED BY: TB