

**STATE OF ILLINOIS
DEPARTMENT OF TRANSPORTATION**

NOTES:

The foundation dimensions shown are based on the presence of mostly cohesive soils with an average Unconfined Compressive Strength (Q_u) of at least 1.25 tsf, which must be determined by previous soil investigations at the jobsite. When other conditions are indicated, the boring data will be included in the plans and the foundation dimensions shown will be the result of site specific designs.

If the conditions encountered are different than those indicated, the Contractor shall notify the Engineer to determine if the foundation dimensions need to be modified. If dimensions "B" or "F" are revised by more than 12" by the Contractor, "as-built" plans shall be prepared and submitted to the District Bureau of Operations for future reference.

No sonotubes or decomposable forms shall be used below the lower conduit entrance. Permanent metal forms or other shielding may not be left in place below that elevation without the Engineer's written permission.

Concrete shall be placed monolithically, without construction joints.

Backfill shall be placed per Article 502 of Standard Specification and prior to erection of support column.

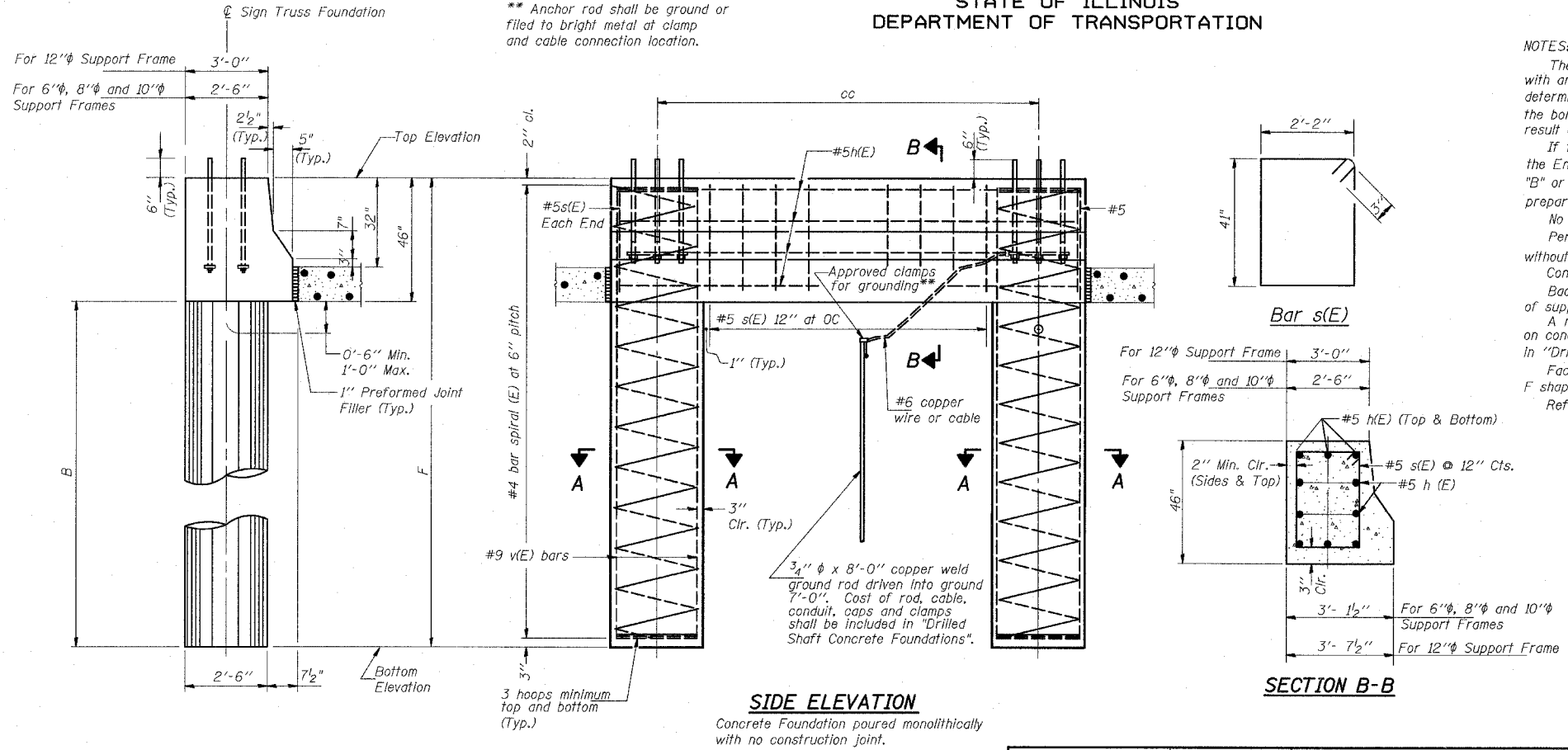
A normal surface finish followed by a Bridge Seat Sealer application will be required on concrete surfaces above the lowest elevation 6" below finished ground line. Cost included in "Drilled Shaft Concrete Foundation".

Face of median support foundation shall match dimensions of permanent barrier wall F shape.

Refer to the lighting plans for location and orientation of the conduit.

BAR LIST - EACH FOUNDATION

Bar	Number	Size	Length	Shape
h(E)	10	#5	M less 4"	—
s(E)	Varies	#5	Varies	□
v(E)	16	#9	F less 0'-5"	—
#4(E) bar spiral - see Side Elevation				

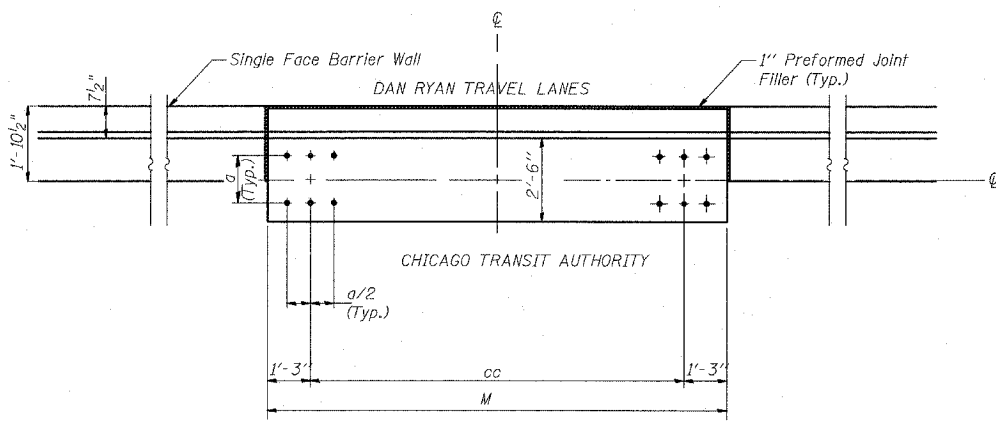


SIDE ELEVATION
Concrete Foundation poured monolithically with no construction joint.

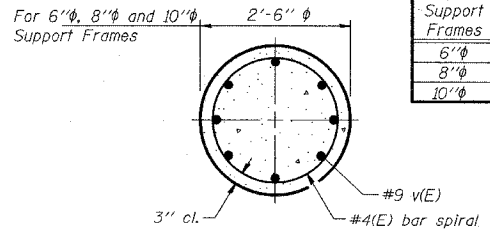
SECTION B-B

END VIEW

Structure Number	Station	Left Foundation		Right Foundation		Class SI Concrete (Cu. Yds.)	
		Elevation Top	Elevation Bottom	B	F		Elevation Top
ISO161057R357.7	215+44	-1.31	-21.65	16.5'	20.34'	10.35	
ISO161057R357.9	227+29	4.04	-20.30	20.5'	24.34'	11.81	



PLAN



SECTION A-A

Pipe Support Frames	cc	M	a	a/2
6"φ	7'-0"	9'-6"	0'-11"	5 1/2"
8"φ	7'-6"	10'-0"	1'-1 1/2"	6 3/4"
10"φ	8'-3"	10'-9"	1'-3"	7 1/2"

MODIFIED BY T.Y. LIN INTERNATIONAL FROM OS4-MED

DESIGNED	20
CHECKED	EXAMINED
DRAWN	PASSED
CHECKED	

REVISIONS	
NAME	DATE

ILLINOIS DEPARTMENT OF TRANSPORTATION
F.A.I. 94 (DAN RYAN EXPRESSWAY)

**OVERHEAD SIGN STRUCTURES
MEDIAN SUPPORT DETAILS FOR
32" SINGLE FACE BARRIER WALL**

SCALE: AS NOTED DRAWN BY: AMB
DATE: MARCH 18, 2005 CHECKED BY: TB