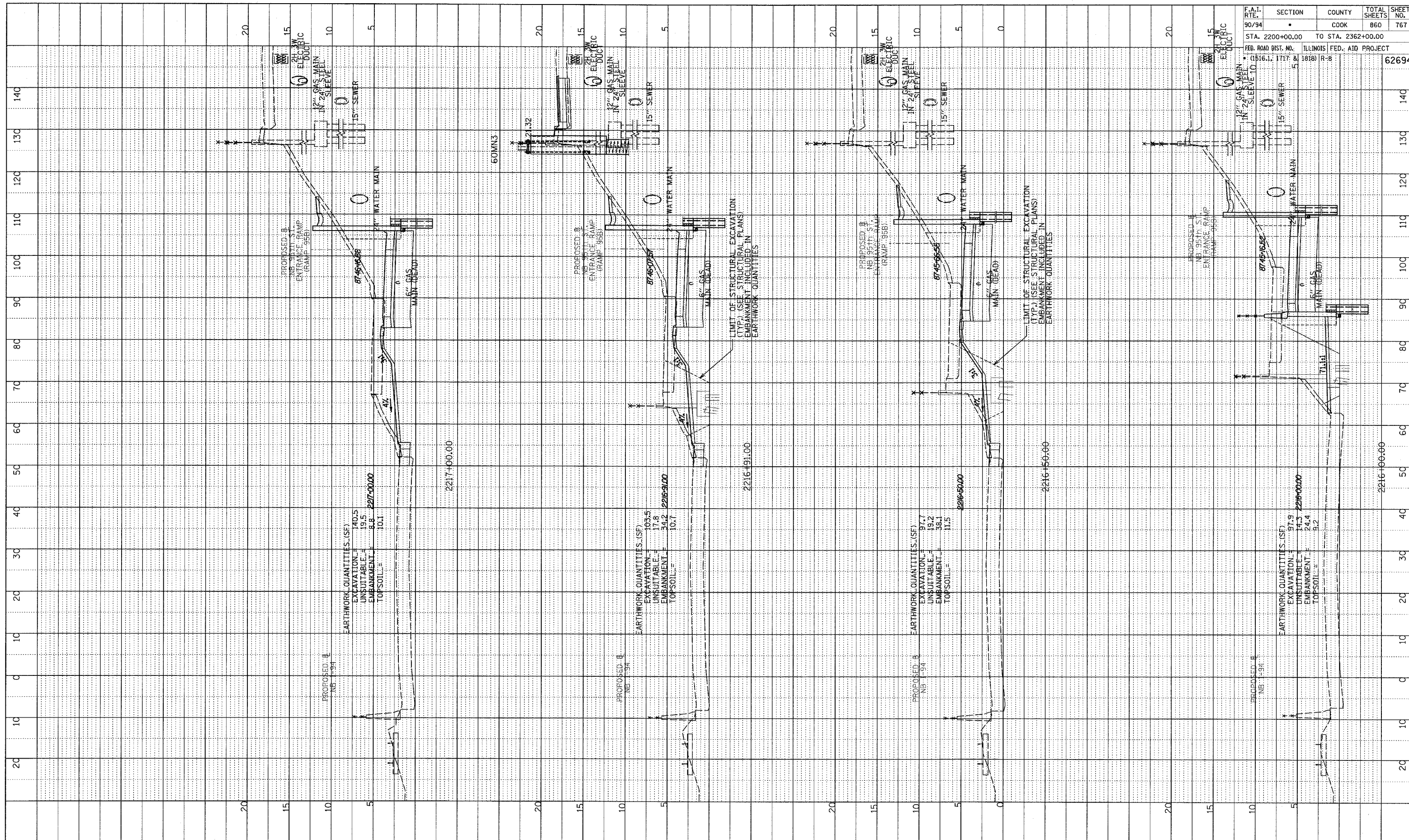


PROFILE SURVEYED
 GRADES CHECKED
 E.M. NOTED
 STIPPLED INDICATING CHG
 NO.

F.A.I. RTE.	SECTION	COUNTY	TOTAL SHEETS	SHEET NO.
90/94		COOK	860	767
STA. 2200+00.00 TO STA. 2362+00.00				
FED. ROAD DIST. NO. ILLINOIS FED. AID PROJECT				
• (1516.1, 1717 & 1818) R-8		62694		



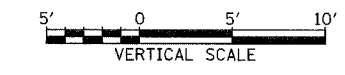
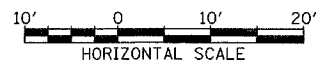
EARTHWORK QUANTITIES (SF)
 EXCAVATION = 140.5
 UNSUITABLE = 19.5
 EMBANKMENT = 8.8
 TOP SOIL = 10.1
 2217+00.00

EARTHWORK QUANTITIES (SF)
 EXCAVATION = 103.5
 UNSUITABLE = 17.8
 EMBANKMENT = 34.2
 TOP SOIL = 10.7
 2216+91.00

EARTHWORK QUANTITIES (SF)
 EXCAVATION = 97.7
 UNSUITABLE = 19.2
 EMBANKMENT = 38.1
 TOP SOIL = 11.5
 2216+50.00

EARTHWORK QUANTITIES (SF)
 EXCAVATION = 97.9
 UNSUITABLE = 14.3
 EMBANKMENT = 24.4
 TOP SOIL = 9.2
 2216+00.00

TYLIN INTERNATIONAL



NB 95th St. ENTRANCE RAMP
 STA. 2216+00 TO STA. 2217+00

P:\0237\3700d\617\angpk1\0155195b-f.dgn