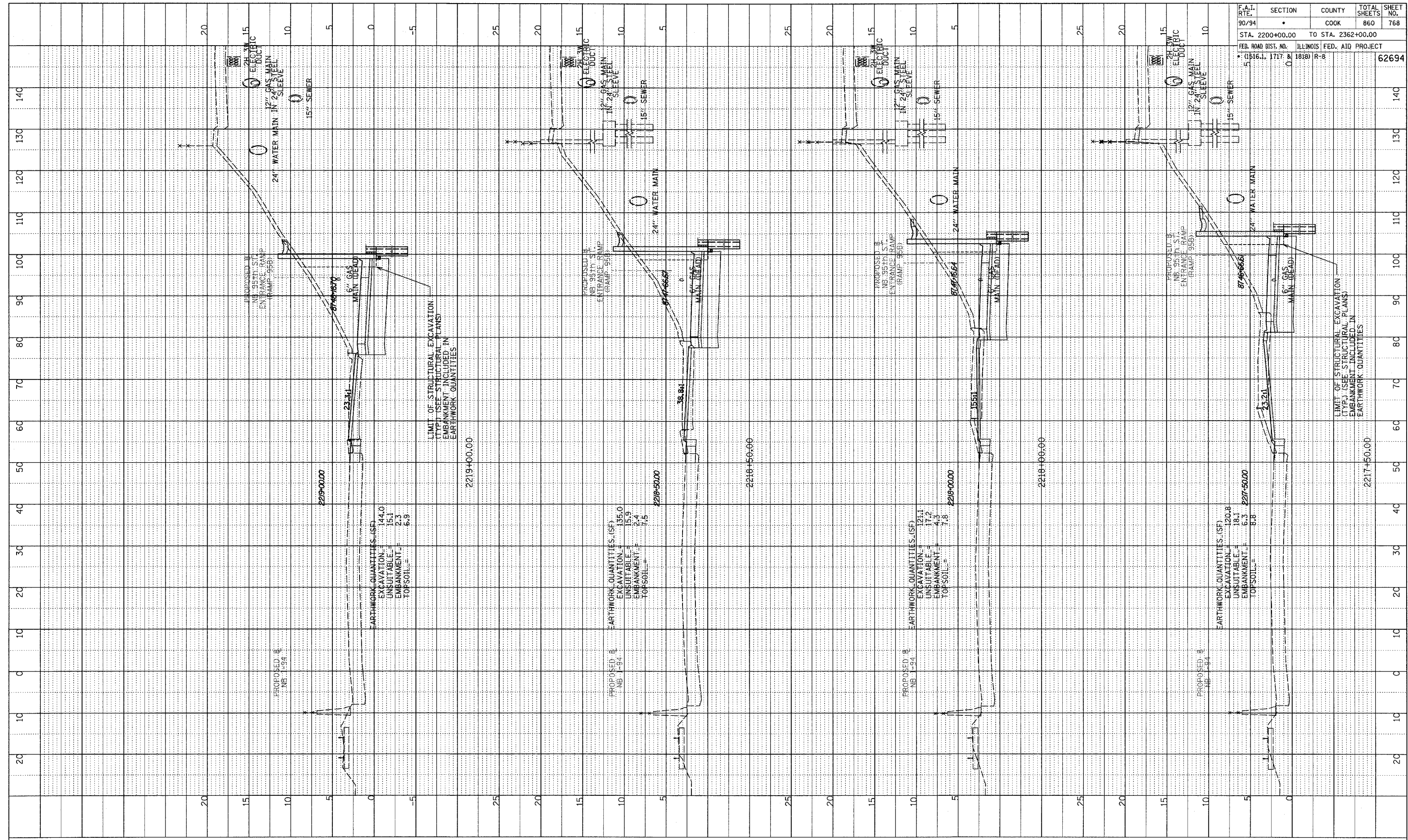


NOTE BOOK
NO. _____
PLOTTED BY: _____
DATE: _____
STRUCTURE NOTATION: CHRD

F.A.I. RTE.	SECTION	COUNTY	TOTAL SHEETS	SHEET NO.
90/94	•	COOK	860	768
STA. 2200+00.00 TO STA. 2362+00.00				
FED. ROAD DIST. NO. ILLINOIS FED. AID PROJECT				
• (1516.1, 1717 & 1818) R-8				
				62694



EARTHWORK QUANTITIES (SF)
EXCAVATION = 144.0
UNSUITABLE = 15.1
EMBANKMENT = 2.3
TOP SOIL = 6.9

EARTHWORK QUANTITIES (SF)
EXCAVATION = 135.0
UNSUITABLE = 15.9
EMBANKMENT = 2.4
TOP SOIL = 7.5

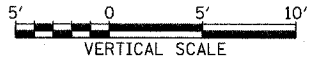
EARTHWORK QUANTITIES (SF)
EXCAVATION = 121.1
UNSUITABLE = 17.2
EMBANKMENT = 4.3
TOP SOIL = 7.8

EARTHWORK QUANTITIES (SF)
EXCAVATION = 120.8
UNSUITABLE = 18.1
EMBANKMENT = 6.3
TOP SOIL = 8.8

LIMIT OF STRUCTURAL EXCAVATION
(TYP.) (SEE STRUCTURAL PLANS)
EMBANKMENT INCLUDED IN
EARTHWORK QUANTITIES

LIMIT OF STRUCTURAL EXCAVATION
(TYP.) (SEE STRUCTURAL PLANS)
EMBANKMENT INCLUDED IN
EARTHWORK QUANTITIES

TYLIN INTERNATIONAL



NB 95th ST. ENTRANCE RAMP
STA. 2217+50 TO STA. 2219+00

PA:02373\road\07\09\pk7\axis95b_f.dgn