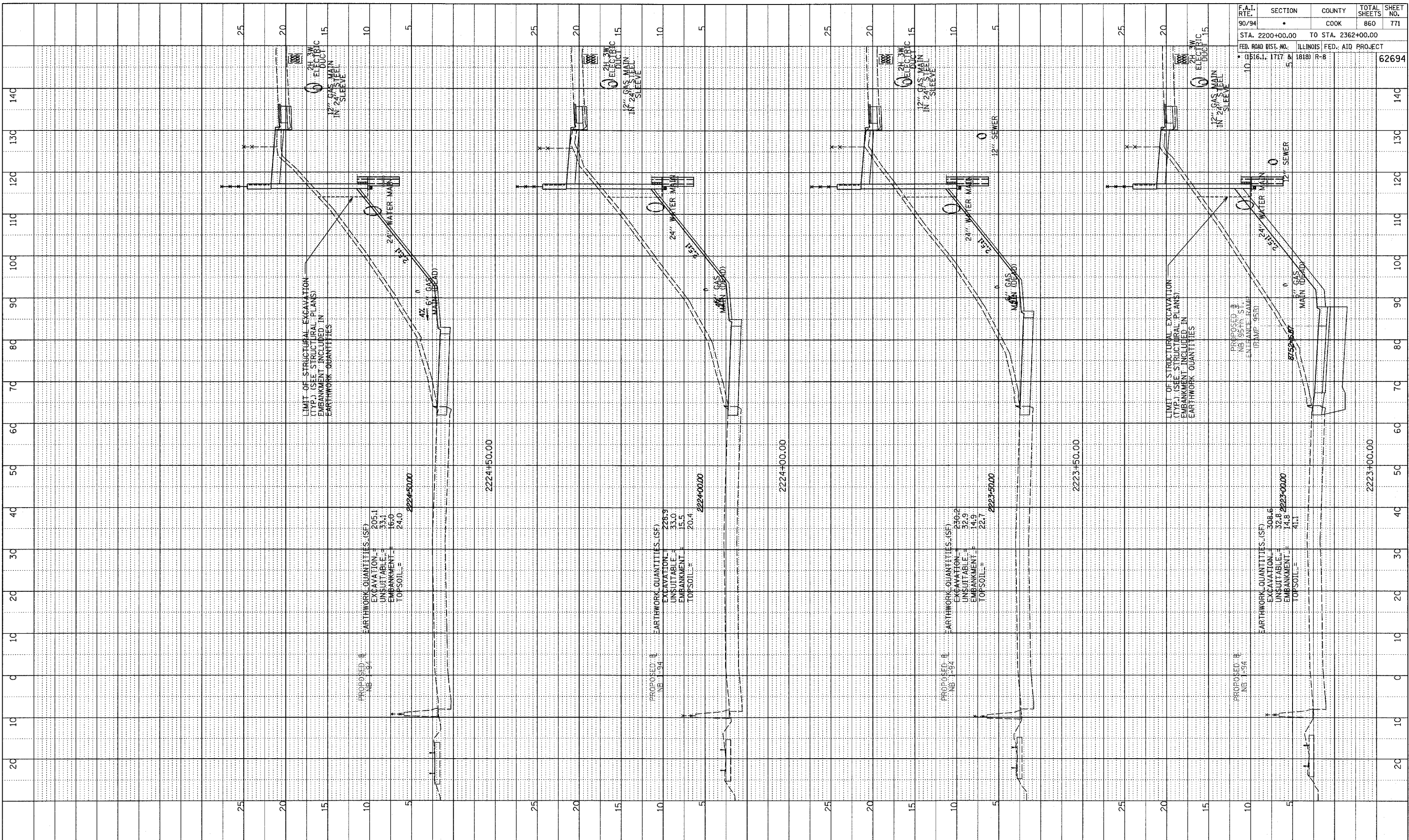


NOTED  
 NO. \_\_\_\_\_  
 STRUCTURE NO. \_\_\_\_\_

F.A.I. RTE.	SECTION	COUNTY	TOTAL SHEETS	SHEET NO.
90/94		COOK	860	771
STA. 2200+00.00		TO STA. 2362+00.00		
FED. ROAD DIST. NO. ILLINOIS FED. AID PROJECT				62694
* (1516.1, 1717 & 1818) R-8				



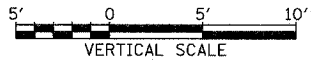
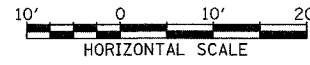
PROPOSED NB 94  
 EARTHWORK QUANTITIES (SF)  
 EXCAVATION = 205.1  
 UNSUITABLE = 33.4  
 EMBANKMENT = 16.0  
 TOPSOIL = 24.0  
 2224+50.00

PROPOSED NB 94  
 EARTHWORK QUANTITIES (SF)  
 EXCAVATION = 228.9  
 UNSUITABLE = 33.0  
 EMBANKMENT = 15.5  
 TOPSOIL = 20.4  
 2224+00.00

PROPOSED NB 94  
 EARTHWORK QUANTITIES (SF)  
 EXCAVATION = 230.2  
 UNSUITABLE = 32.9  
 EMBANKMENT = 14.9  
 TOPSOIL = 22.7  
 2223+50.00

PROPOSED NB 94  
 EARTHWORK QUANTITIES (SF)  
 EXCAVATION = 308.6  
 UNSUITABLE = 32.8  
 EMBANKMENT = 14.8  
 TOPSOIL = 41.1  
 2223+00.00

TYLIN INTERNATIONAL



NB 95th ST. ENTRANCE RAMP  
 STA. 2223+00 TO STA. 2224+50

PA-02313\road\cvt\c\p\it\axis\15b5\_f.dgn