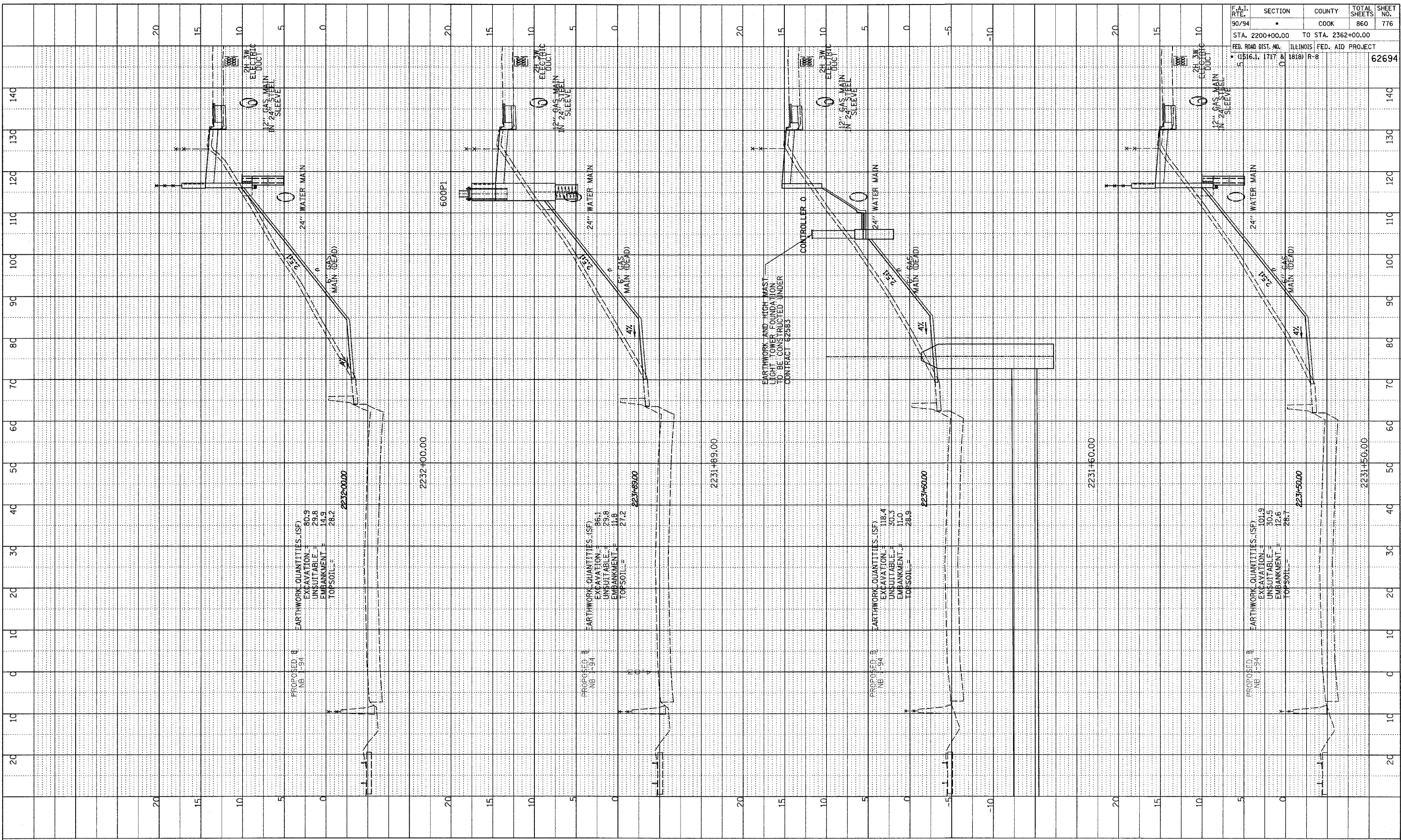
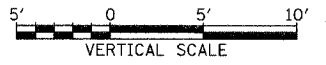
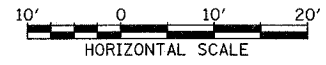


PLOTTED
 DATE: 08/11/94
 BY: J. W. BROWN
 NO. 1
 STRUCTURE NOTATION: CHRD

F.A.I. RTE.	SECTION	COUNTY	TOTAL SHEETS	SHEET NO.
90/94	*	COOK	860	776
STA. 2200+00.00		TO STA. 2362+00.00		
FED. ROAD DIST. NO.		ILLINOIS FED. AID PROJECT		
* (1516.1, 1717 & 1818) R-8				62694



TYLIN INTERNATIONAL



NB 95th ST. ENTRANCE RAMP
 STA. 2231+50 TO STA. 2232+00

PA02313vroad.ctb (x:\proj\62694\ex85895p1.dgn)