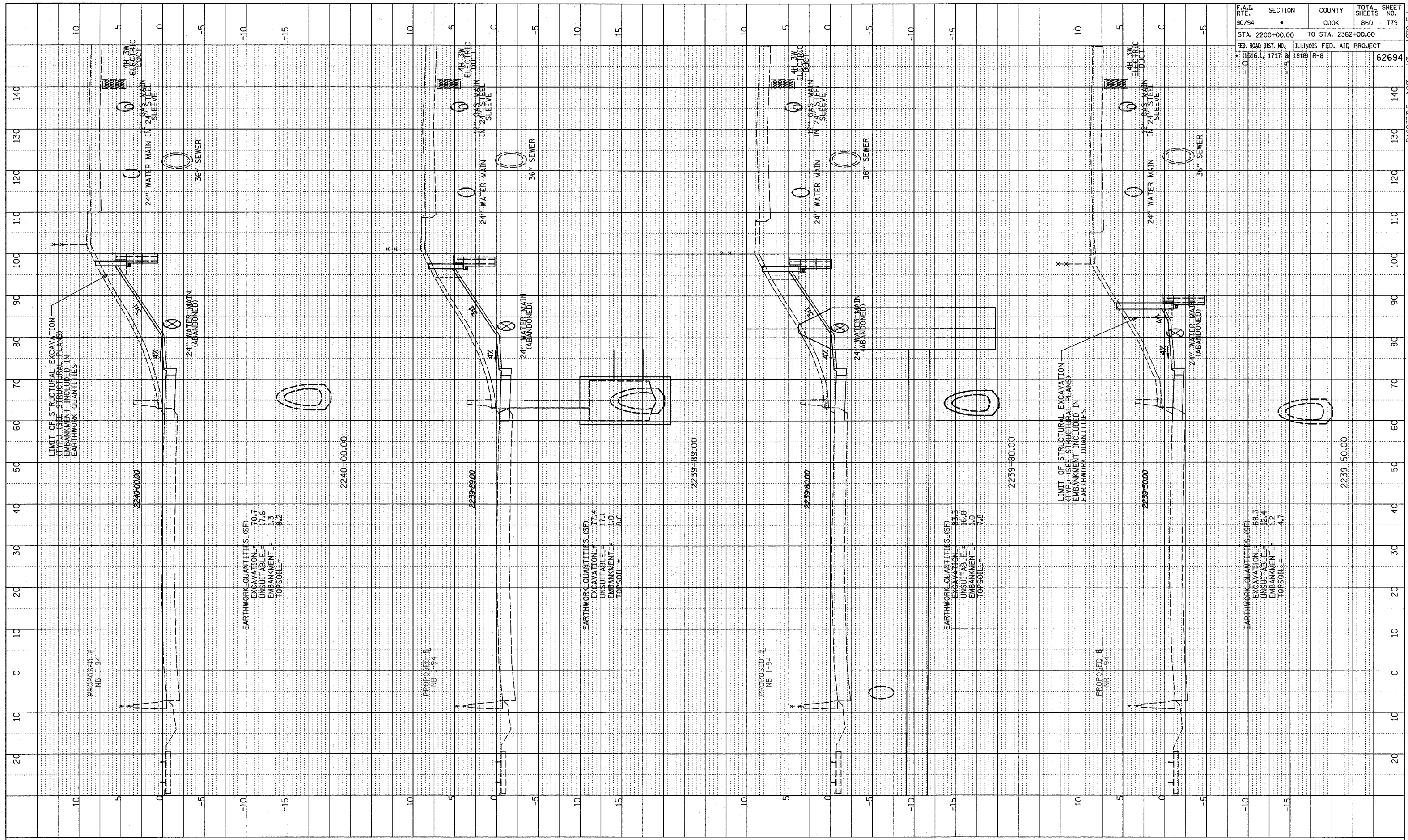
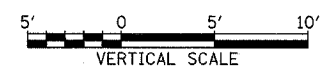
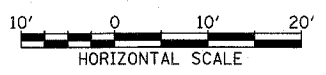


NOTE BOOK GRADES CHECKED B.A.M. NOTED STRUCTURE NOTATIONS DWG. NO. REVISED 05/06/05



F.A.I. RTE.	SECTION	COUNTY	TOTAL SHEETS	SHEET NO.
90/94		COOK	860	779
STA. 2200+00.00		TO STA. 2362+00.00		
FEB. ROAD DIST. NO.		ILLINOIS FED. AID PROJECT		
10161, 1717 & 1818 R-8				62694

TYLIN INTERNATIONAL



NB 87th ST. EXIT RAMP
 STA. 2239+50 TO STA. 2240+00

P:\02373\Road\017\gprk\Tass\87C.F.dgn