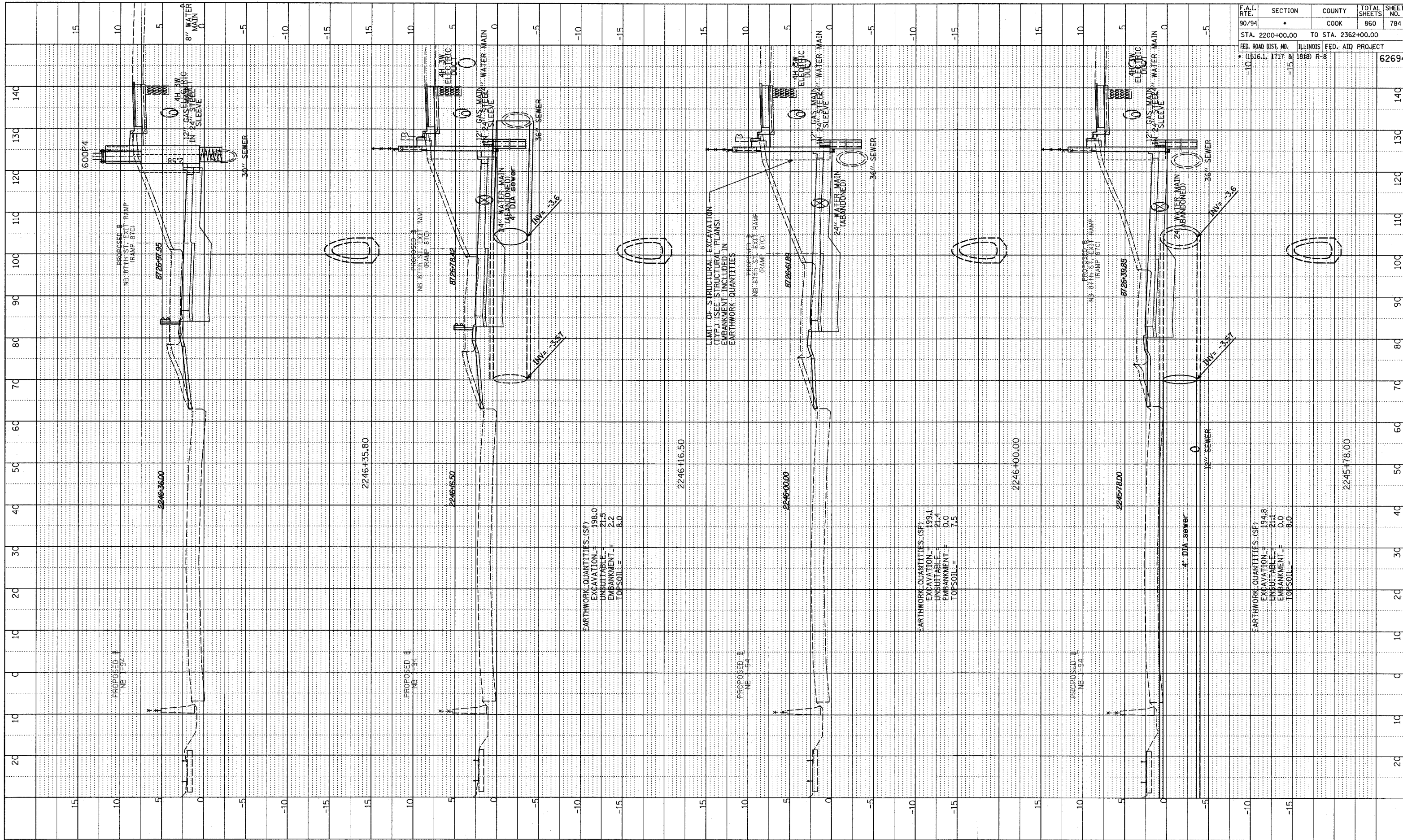
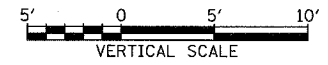


NOTE: BDM, GRADES CHECKED, B.M. NOTED, STRUCTURE NOTATIONS OK'D  
 REVISED 05/06/05



F.A.I. RTE.	SECTION	COUNTY	TOTAL SHEETS	SHEET NO.
90/94	*	COOK	860	784
STA. 2200+00.00 TO STA. 2362+00.00				
FED. ROAD DIST. NO. 1516.1, 1717 & 1818		ILLINOIS FED. AID PROJECT R-8		62694

TYLIN INTERNATIONAL



NB 87th ST. EXIT RAMP  
 STA. 2245+78 TO STA. 2246+16

P:\02373\Food\C17\gpk17\axss18\C.F.dgn