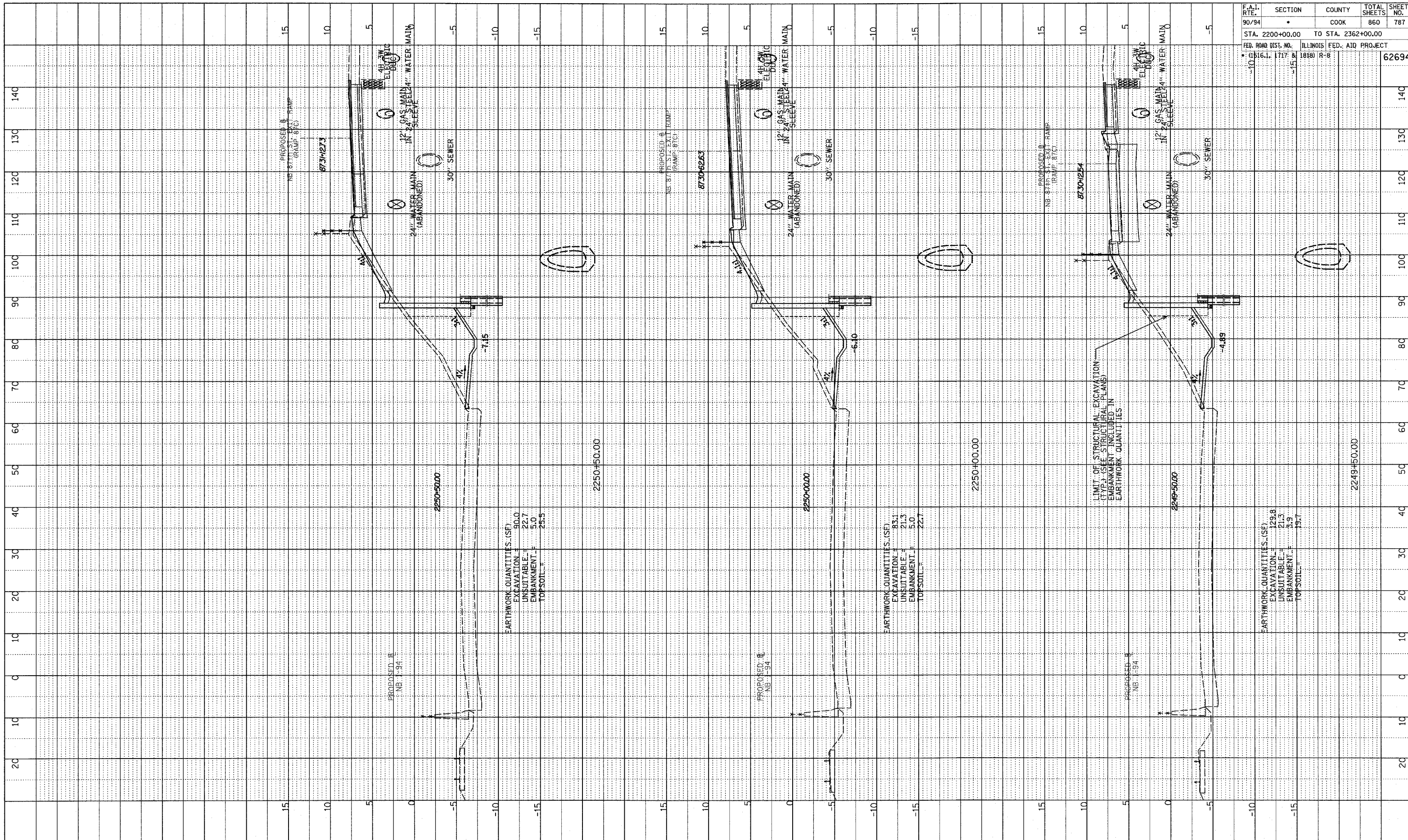


NOTE BOOK
 GRADES CHECKED
 DATE: 05/06/05
 DRAWN BY: [blank]
 CHECKED BY: [blank]
 REVISIONS: [blank]

REVISED 05/06/05



| F.A.I. RTE. | SECTION | COUNTY | TOTAL SHEETS | SHEET NO. |
|--------------------------|---------|---------------------------|--------------|-----------|
| 90/94 | | COOK | 860 | 787 |
| STA. 2200+00.00 | | TO STA. 2362+00.00 | | |
| FED. ROAD DIST. NO. | | ILLINOIS FED. AID PROJECT | | |
| 161.1, 171.7 & 181.8 R-8 | | | | 62694 |

TYL INTERNATIONAL



NB 87th St. EXIT RAMP
 STA. 2249+50 TO STA. 2250+50

P:\02373\Road\017\gpk\050505\F-1.dgn