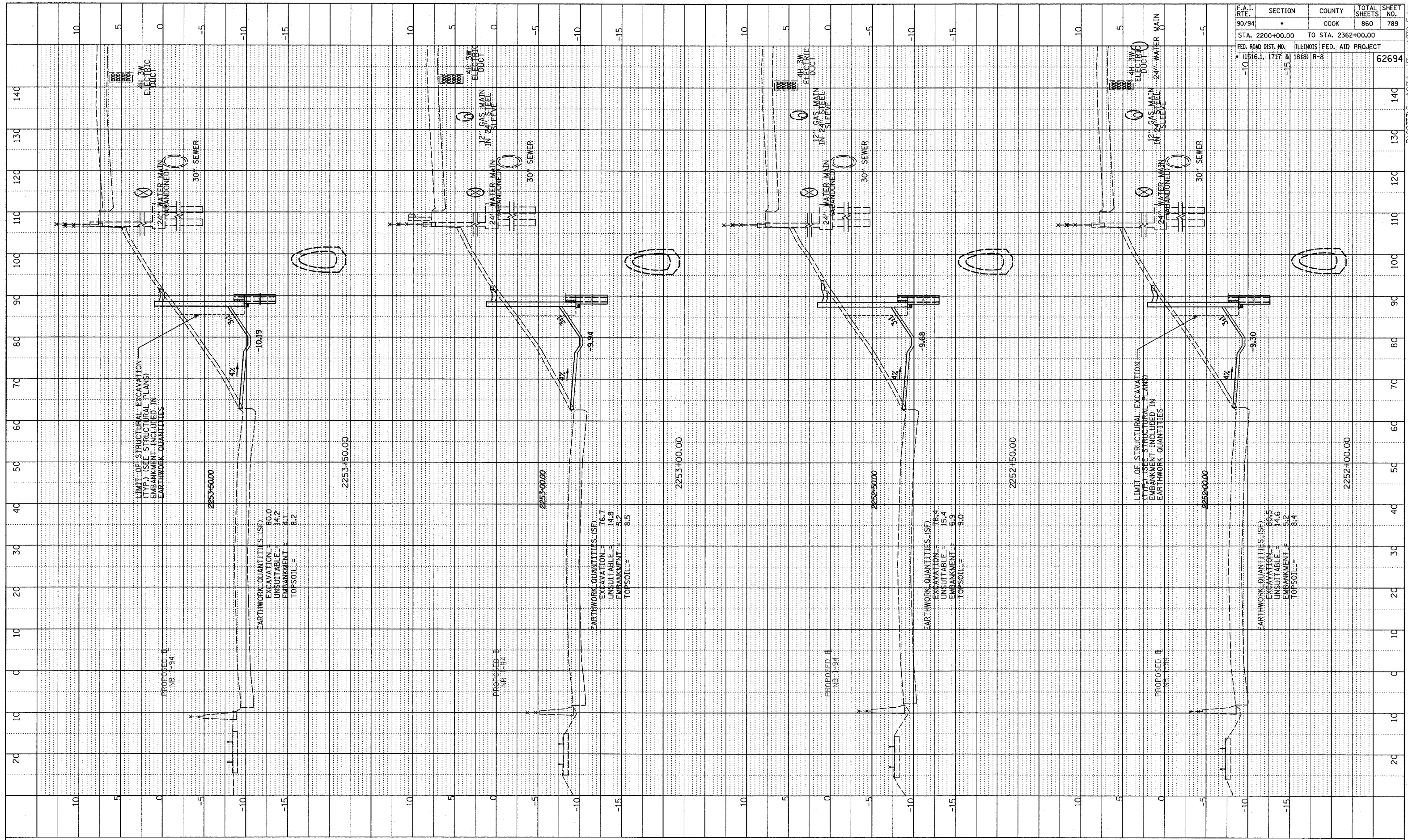
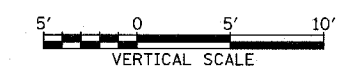
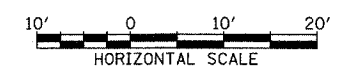


NOTE BOOK
 GRADES CHECKED
 E.M. NOTED
 STRUCTURE NOTATIONS CHFD
 NO. _____
 REVISED 05/06/05



F.A.I. RTE.	SECTION	COUNTY	TOTAL SHEETS	SHEET NO.
90/94		COOK	860	789
STA. 2200+00.00 TO STA. 2362+00.00				
FED. ROAD DIST. NO. 1516.1, 1717 & 1818		ILLINOIS FED. AID PROJECT R-8		62694

TYLIN INTERNATIONAL



NB 87th ST. EXIT RAMP
 STA. 2252+00 TO STA. 2253+50

P:\023735\Road\07\Drawings\1818\1818-C-F.dwg