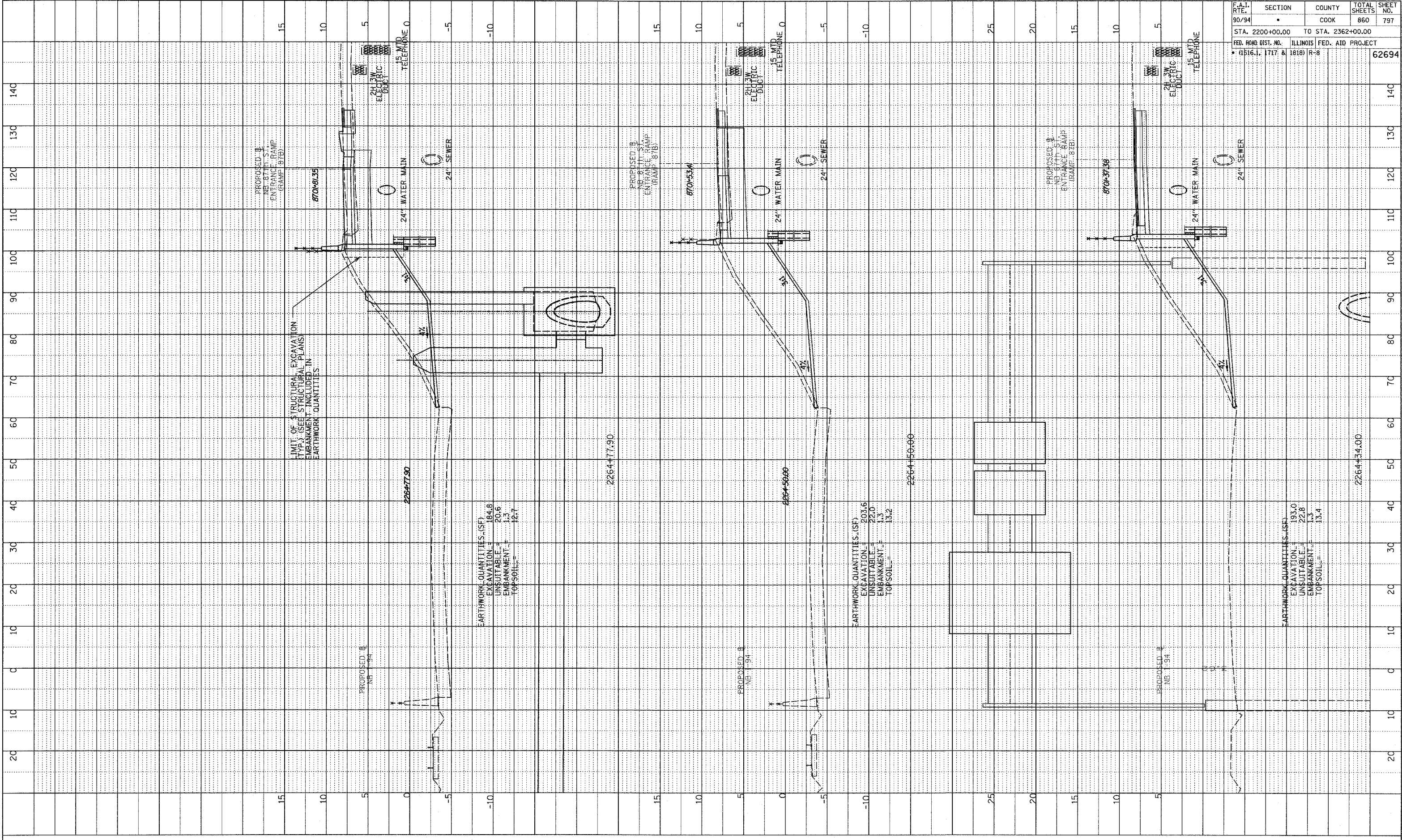
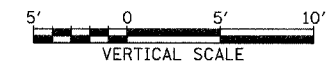


NOTE BOOK  
 PLOTTED  
 DATE  
 BY  
 NO.

F.A.T. RTE.	SECTION	COUNTY	TOTAL SHEETS	SHEET NO.
90/94		COOK	860	797
STA. 2200+00.00 TO STA. 2362+00.00				
FED. ROAD DIST. NO. ILLINOIS FED. AID PROJECT				
• (1516.1, 1717 & 1818) R-8				
				62694



TYLIN INTERNATIONAL



NB 87th ST. ENTRANCE RAMP  
 STA. 2264+34 TO STA. 2264+77

P:\02\3\road\01\cadd\cross\87b.dwg