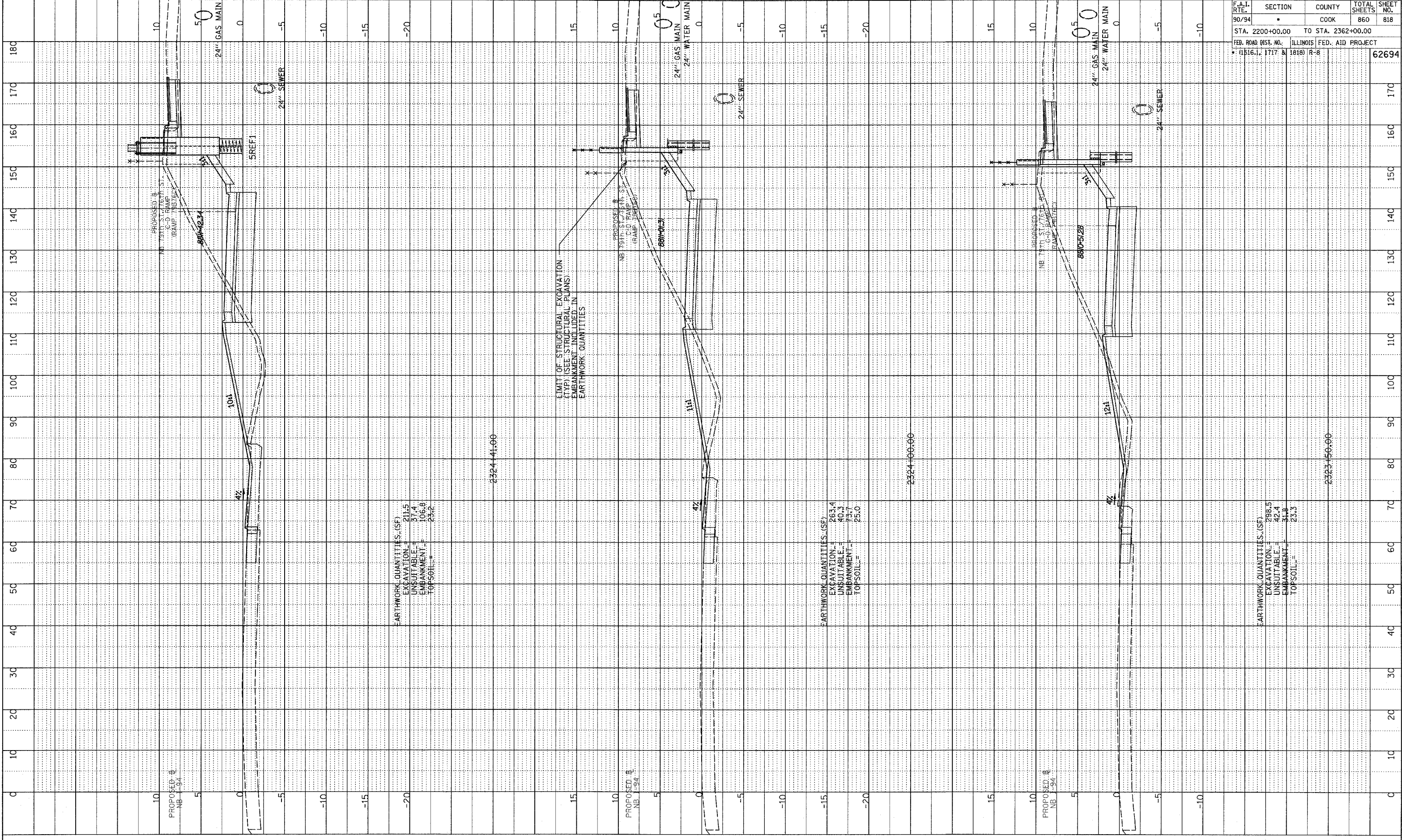


NOTE BOOK  
 DRAWING NUMBER  
 STRUCTURE NOTATION CHNO



EARTHWORK QUANTITIES (SF)  
 EXCAVATION = 211.5  
 UNSUITABLE = 57.4  
 EMBANKMENT = 106.8  
 TOPSOIL = 23.2

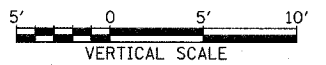
EARTHWORK QUANTITIES (SF)  
 EXCAVATION = 263.4  
 UNSUITABLE = 40.3  
 EMBANKMENT = 73.7  
 TOPSOIL = 25.0

EARTHWORK QUANTITIES (SF)  
 EXCAVATION = 298.5  
 UNSUITABLE = 42.4  
 EMBANKMENT = 31.8  
 TOPSOIL = 23.3

LIMIT OF STRUCTURAL EXCAVATION  
 (TYP) (SEE STRUCTURAL PLANS)  
 EMBANKMENT INCLUDED IN  
 EARTHWORK QUANTITIES

F.A.I. RTE.	SECTION	COUNTY	TOTAL SHEETS	SHEET NO.
90/94		COOK	860	818
STA. 2200+00.00 TO STA. 2362+00.00				
FED. ROAD DIST. NO.		ILLINOIS FED. AID PROJECT		
• (1516.1, 1717 & 1818) R-8				62694

TYLIN INTERNATIONAL



NB 79th TO 76th C-D RAMP  
 STA. 2323+50 TO STA. 2324+41

P:\0231\3\wood\31\0\gpr\1\assht\916-f.dgn