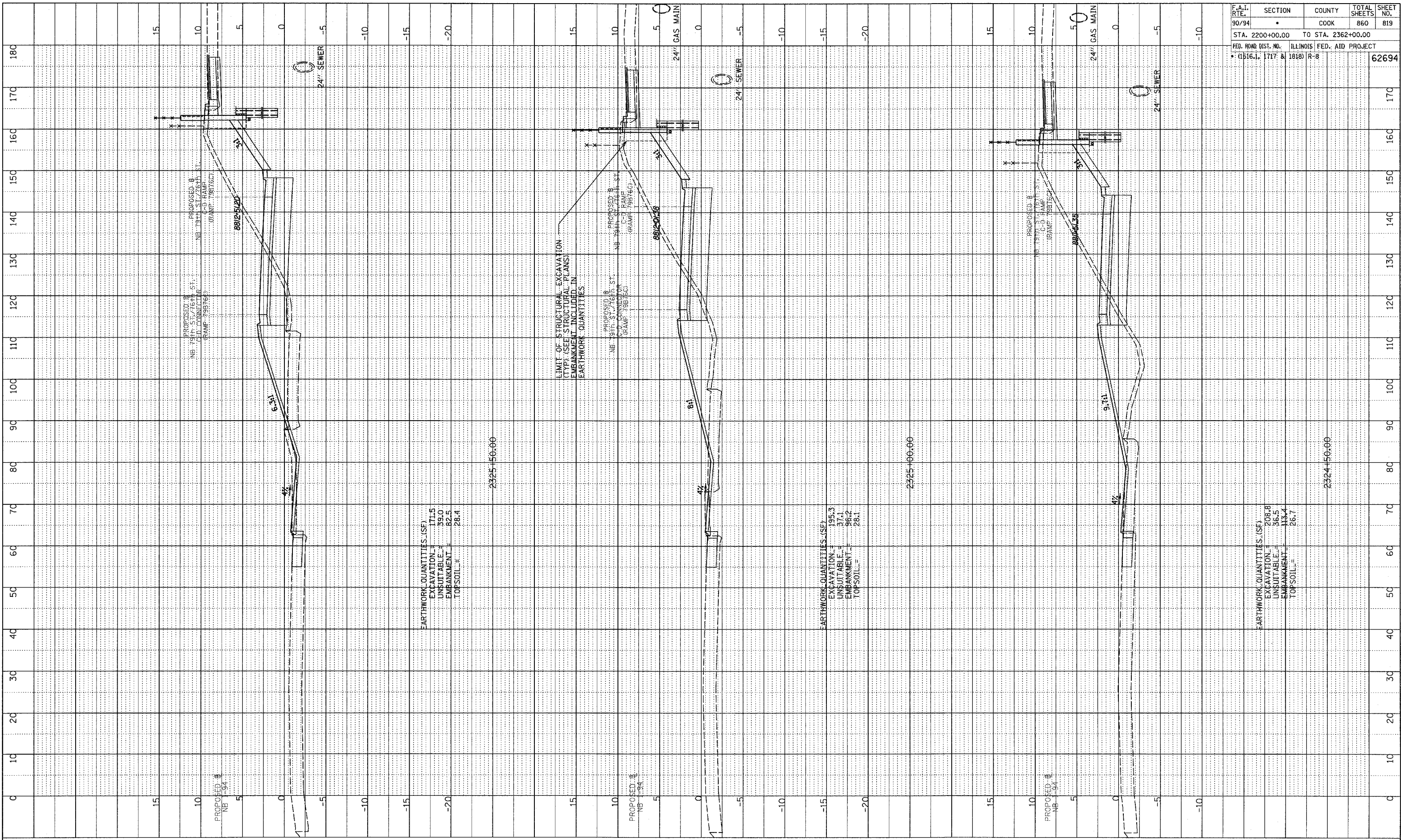
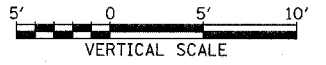


NOTE BOOK  
 PLOTTED, CHECKED  
 REVISIONS  
 NO. \_\_\_\_\_  
 STRUCTURE NOTATION: CPD

F.A.I. RTE.	SECTION	COUNTY	TOTAL SHEETS	SHEET NO.
90/94	*	COOK	860	819
STA. 2200+00.00 TO STA. 2362+00.00		ILLINOIS FED. AID PROJECT		
* (1516.1, 1717 & 1818) R-8		62694		



TYLIN INTERNATIONAL



NB 79th TO 76th C-D RAMP  
 STA. 2324+50 TO STA. 2325+50

P:\0237\road\9094\9094.dwg (1/25/96) JAG