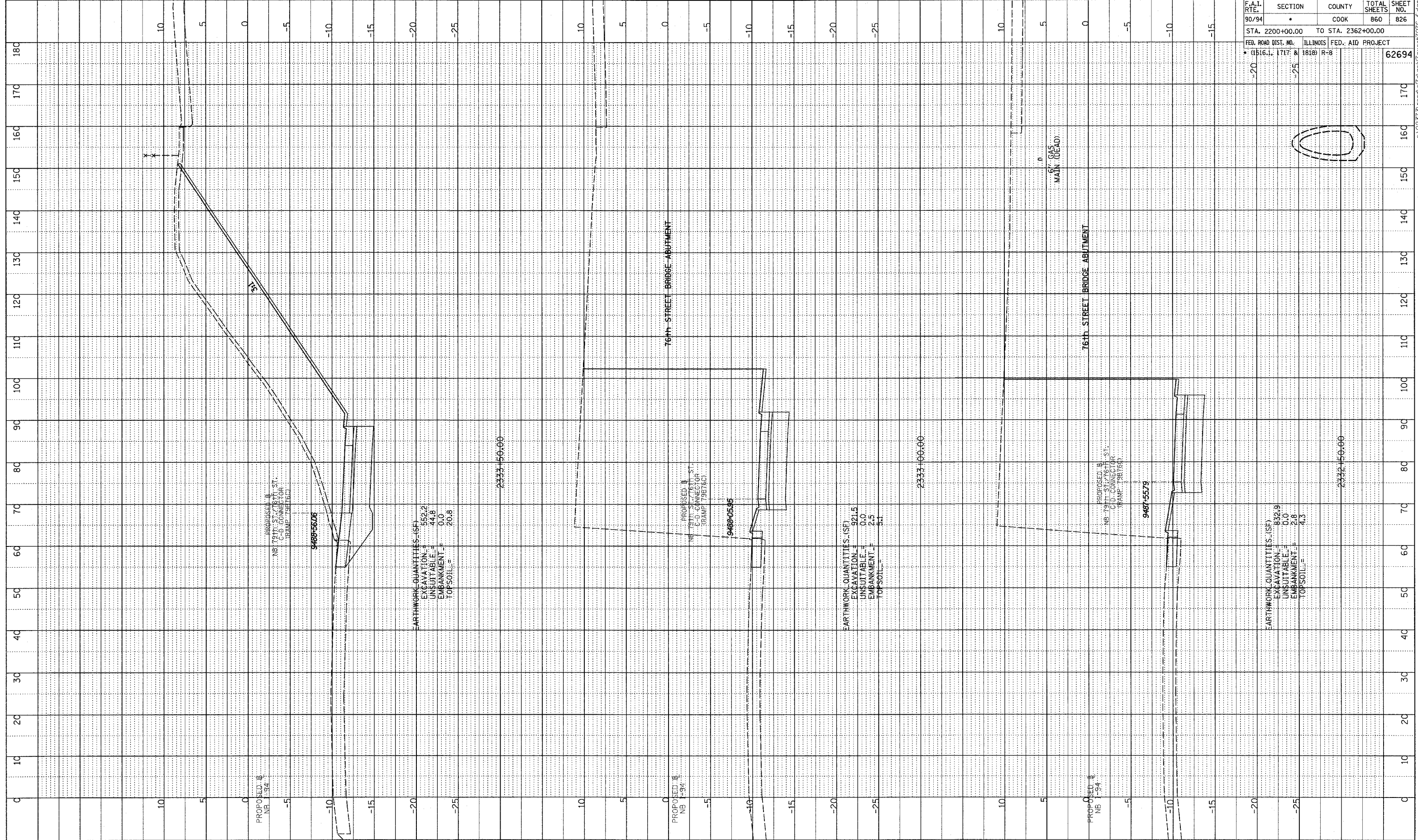
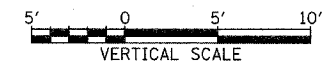
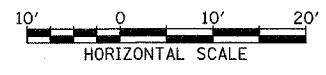


PROFILE SUBMITTED
 GRADES CHECKED
 DATE NOTED
 NO.



F.A.I. RTE.	SECTION	COUNTY	TOTAL SHEETS	SHEET NO.
90/94	*	COOK	860	826
STA. 2200+00.00		TO STA. 2362+00.00		
FED. ROAD DIST. NO.		ILLINOIS	FED. AID PROJECT	
* (1516.1, 1717 & 1818) R-8				62694

TYLIN INTERNATIONAL



NB 79th TO 76th C-D RAMP
STA. 2332+50 TO STA. 2333+50

P:\02373\road\07\9\gpr\traxst\916_1.dgn