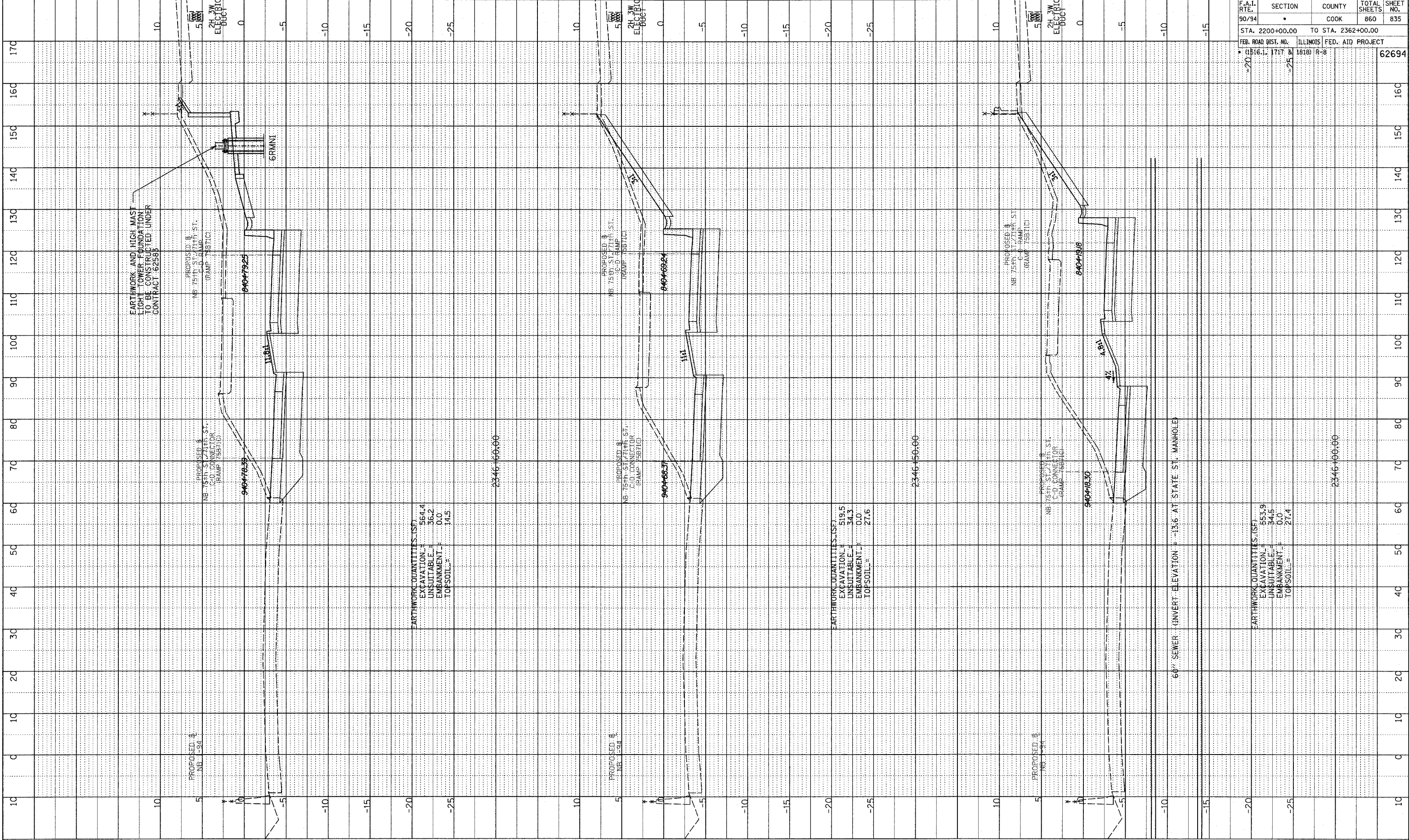


PLOTTED & CHECKED
 DATE: 11/11/11
 NO. _____
 STRUCTURE NOTATION: CPND



EARTHWORK AND HIGH MAST
 LIGHT TOWER FOUNDATION
 TO BE CONSTRUCTED UNDER
 CONTRACT 62588

PROPOSED B
 NB 75th ST. 71th ST.
 C-D RAMP
 (RAMP 75B71C)

94047925

PROPOSED B
 NB 75th ST. 71th ST.
 C-D CONNECTOR
 (RAMP 75B71D)

94047839

EARTHWORK QUANTITIES (SF)
 EXCAVATION = 564.4
 UNSUITABLE = 36.2
 EMBANKMENT = 0.0
 TOPSOIL = 14.5

2346+60.00

PROPOSED B
 NB 75th ST. 71th ST.
 C-D RAMP
 (RAMP 75B71C)

94046924

PROPOSED B
 NB 75th ST. 71th ST.
 C-D CONNECTOR
 (RAMP 75B71D)

94046837

EARTHWORK QUANTITIES (SF)
 EXCAVATION = 519.5
 UNSUITABLE = 34.3
 EMBANKMENT = 0.0
 TOPSOIL = 27.6

2346+50.00

PROPOSED B
 NB 75th ST. 71th ST.
 C-D RAMP
 (RAMP 75B71D)

9404918

PROPOSED B
 NB 75th ST. 71th ST.
 C-D CONNECTOR
 (RAMP 75B71C)

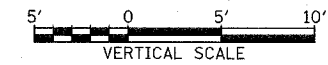
94049130

EARTHWORK QUANTITIES (SF)
 EXCAVATION = 553.9
 UNSUITABLE = 34.5
 EMBANKMENT = 0.0
 TOPSOIL = 27.4

2346+60.00

60" SEWER (INVERT ELEVATION = -13.6 AT STATE ST. MANHOLE)

TYLIN INTERNATIONAL



NB 75th TO 71st. C-D RAMP
 STA. 2346+00 TO STA. 2346+60

F.A.I. RTE.	SECTION	COUNTY	TOTAL SHEETS	SHEET NO.
90/94	*	COOK	860	835
STA. 2200+00.00 TO STA. 2362+00.00				
FED. ROAD DIST. NO. ILLINOIS FED. AID PROJECT				
* (1516.1, 1717 & 1818) R-8				
				62694

P:\02373\road\c\70\agk\70\axst\571.dgn