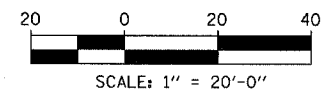
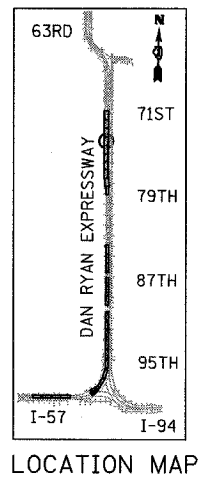
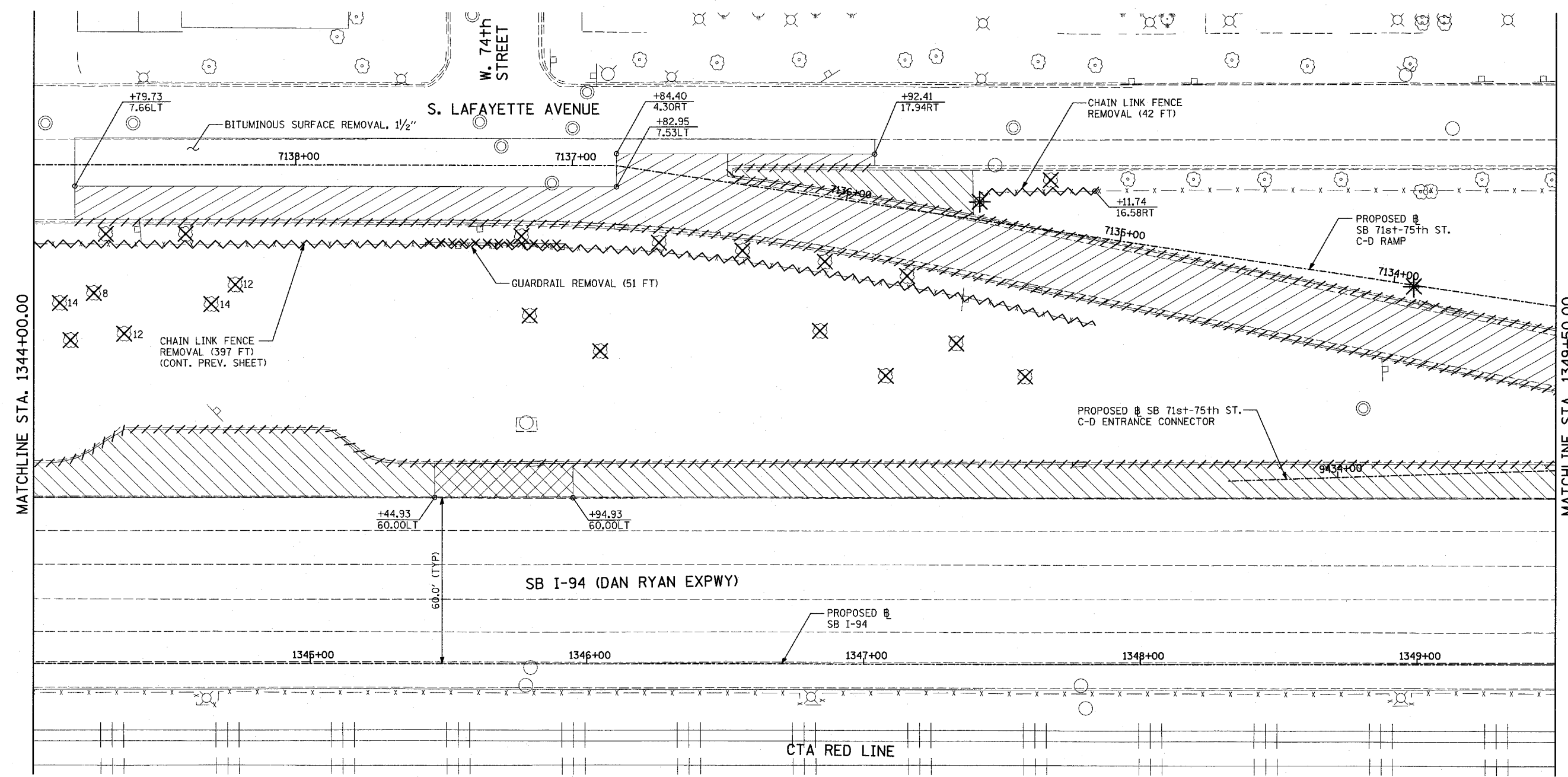


F.A.I. RTE.	SECTION	COUNTY	TOTAL SHEETS	SHEET NO.
94		COOK	907	88
STA. 1200+00.00 TO STA. 1365+00				
FED. ROAD DIST. NO.		ILLINOIS FED. AID PROJECT		
• (1516.1, 1717 & 1818) R-9		62695		



LEGEND:

- PAVEMENT REMOVAL
- PAVED SHOULDER REMOVAL
- PAVEMENT/SHOULDER REMOVAL, SPECIAL
- COMB CONC CURB & GUTTER REMOVAL
- CHAIN LINK FENCE REMOVAL
- CONCRETE BARRIER/GUARDRAIL REMOVAL
- TREE REMOVAL (UNITS) (NO UNIT SHOWN = <6)
- SOIL BORING LOCATIONS
- LIGHT POLE FOUNDATION REMOVAL (SEE EXISTING ELECTRICAL PLANS)

- (+XX.XX) MAINLINE # STATION/OFFSET
- (XX.XXRT) STATION/OFFSET
- +XX.XX RAMP #
- XX.XXRT STATION/OFFSET

- NOTES:**
- ALL STATION/OFFSET/RADIUS CALLOUTS MEASURED TO EDGE OF PAVEMENT UNLESS OTHERWISE NOTED.
 - EXACT LOCATIONS OF EXISTING PIERS/ABUTMENTS TO BE FIELD VERIFIED

REVISIONS	
NAME	DATE

ILLINOIS DEPARTMENT OF TRANSPORTATION
 F.A.I. 94 (DAN RYAN EXPRESSWAY)
 EXISTING PLAN
 SB 71st TO 75th STREET C-D RAMP
 SB I-94 STA. 1344+00.00 TO 1349+50.00

SCALE: 1"=20'
 DATE: MARCH 25, 2005
 DRAWN BY: MPG
 CHECKED BY: CL

TYLIN INTERNATIONAL

03/30/2005 11:25:51 AM