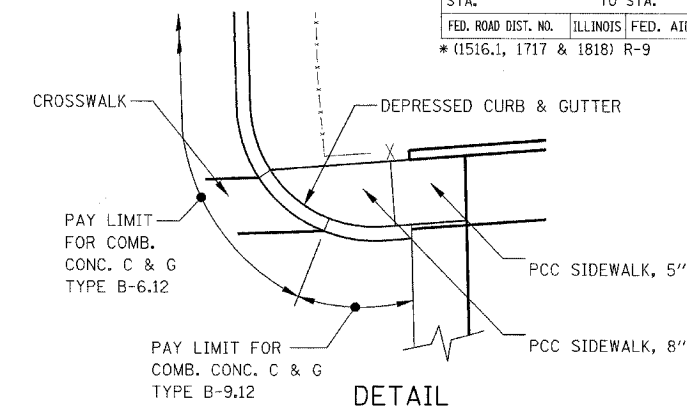
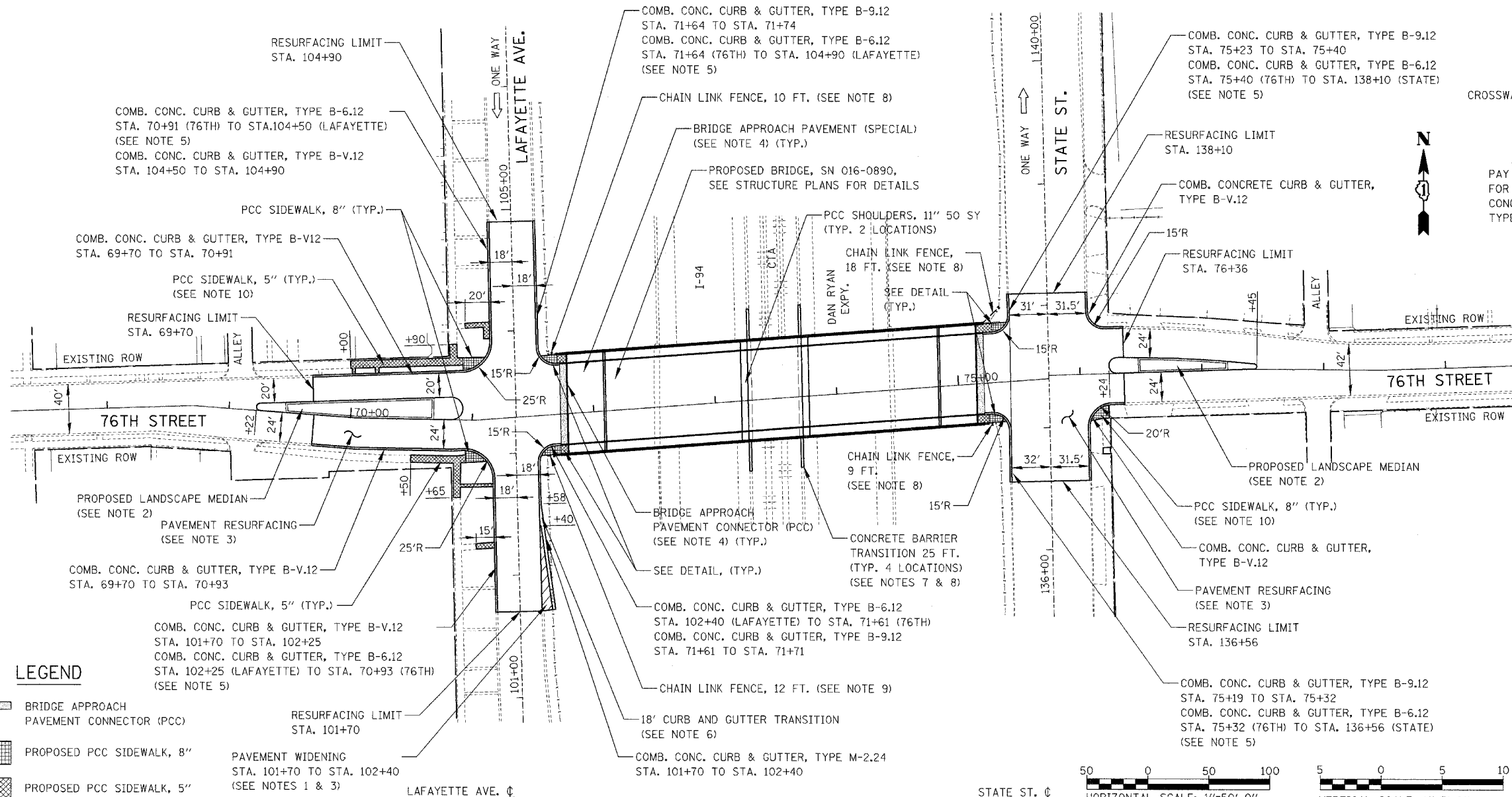


F.A.I. RTE.	SECTION	COUNTY	TOTAL SHEETS	SHEET NO.
94	*	COOK	907	97
STA. TO STA.		FED. ROAD DIST. NO. ILLINOIS FED. AID PROJECT		
		* (1516.1, 1717 & 1818) R-9		
				62695

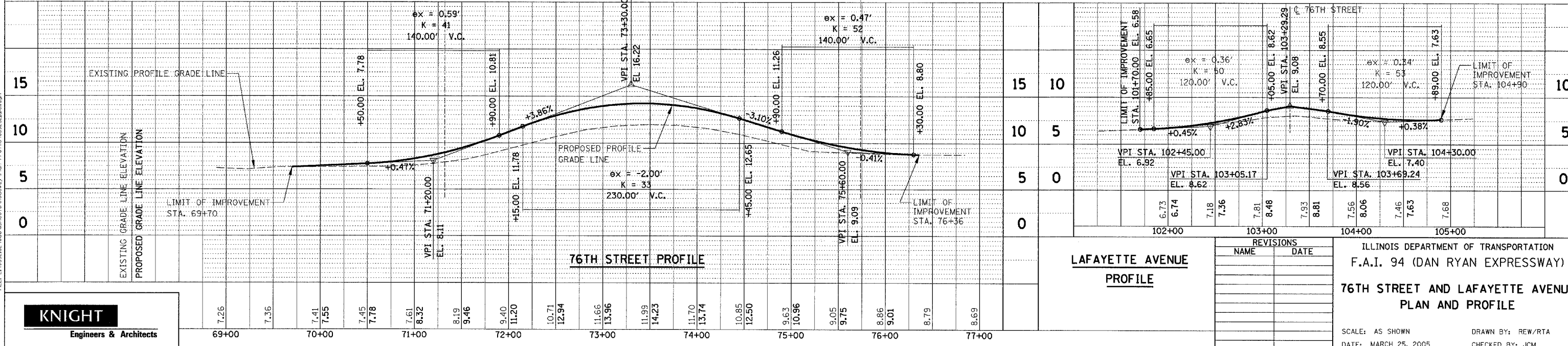
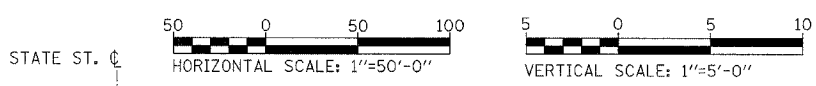


- NOTES:**
- SEE SB 76TH TO 79TH STREET C-D RAMP PLANS FOR CONTINUATION.
 - FOR DETAILS SEE LANDSCAPE MEDIAN PLANS.
 - SEE TYPICAL SECTIONS FOR PAVEMENT RESURFACING AND WIDENING DETAILS.
 - FOR DETAILS SEE BRIDGE APPROACH PAVEMENT (SPECIAL).
 - DEPRESSED CURB & GUTTER SHALL BE PAID FOR AS COMBINATION CONCRETE CURB & GUTTER, TYPE B-6.12.
 - CURB TRANSITION SHALL BE PAID FOR AS COMBINATION CONCRETE CURB AND GUTTER, TYPE B-6.12.
 - EXISTING CHAIN LINK FENCE TO BE RE-ERECTED ON CONCRETE BARRIER TRANSITION.
 - SEE 76TH AND 75TH STREET CONSTRUCTION DETAILS FOR CONCRETE BARRIER TRANSITION DETAIL.
 - PROPOSED CHAIN LINK FENCE SHALL MEET PROPOSED CHAIN LINK FENCE SHOWN ON SB 76TH TO 79TH STREET C-D RAMP PLANS.
 - PCC SIDEWALK, 8" SHALL BE CONSTRUCTED WITH DETECTABLE WARNINGS AS SHOWN ON THE DETAILS OF CURB RAMP FOR PEOPLE WITH DISABILITIES. THIS WORK SHALL BE PAID FOR AT THE CONTRACT UNIT PRICE PER SQUARE FOOT FOR CAST IN PLACE TACTILE / DETECTABLE WARNING SURFACE SYSTEM FOR RAMP FOR PEOPLE WITH DISABILITIES.



LEGEND

- BRIDGE APPROACH PAVEMENT CONNECTOR (PCC)
- PROPOSED PCC SIDEWALK, 8"
- PROPOSED PCC SIDEWALK, 5"
- PAVEMENT WIDENING STA. 101+70 TO STA. 102+40 (SEE NOTES 1 & 3)



DATE	
BY	
REVISIONS	
NO.	
DESCRIPTION	
DATE	
BY	
NO.	
DESCRIPTION	
DATE	
BY	
NO.	
DESCRIPTION	

DATE	
BY	
REVISIONS	
NO.	
DESCRIPTION	
DATE	
BY	
NO.	
DESCRIPTION	
DATE	
BY	
NO.	
DESCRIPTION	

KNIGHT
Engineers & Architects

REVISIONS	
NAME	DATE

ILLINOIS DEPARTMENT OF TRANSPORTATION
F.A.I. 94 (DAN RYAN EXPRESSWAY)
**76TH STREET AND LAFAYETTE AVENUE
PLAN AND PROFILE**

SCALE: AS SHOWN
DATE: MARCH 25, 2005

DRAWN BY: REW/RTA
CHECKED BY: JCM