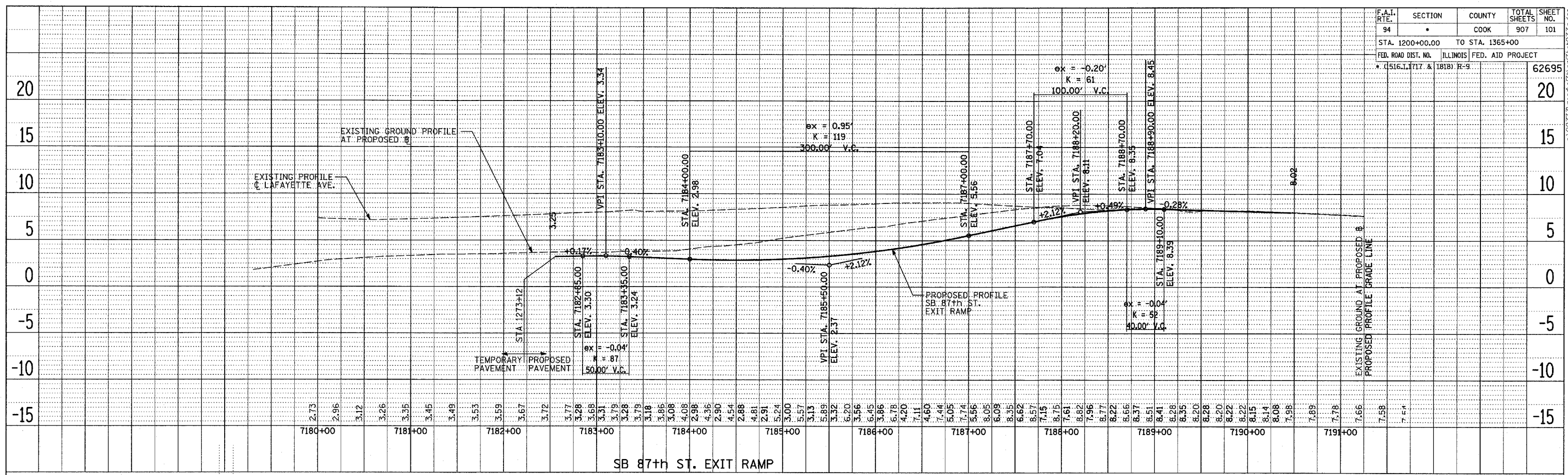
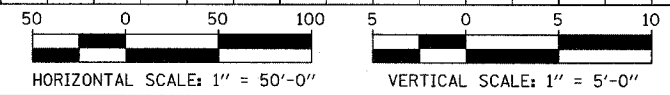


F.A.I. RTE.	SECTION	COUNTY	TOTAL SHEETS	SHEET NO.
94		COOK	907	101
STA. 1200+00.00 TO STA. 1365+00				
FED. ROAD DIST. NO.		ILLINOIS FED. AID PROJECT		
* (1516, 1, 1717 & 1818) R-9				62695



PLAN  
 REVISIONS  
 CHECKED  
 ALIGNED  
 CHECKED  
 DATE  
 BY

PLAN  
 REVISIONS  
 CHECKED  
 ALIGNED  
 CHECKED  
 DATE  
 BY



REVISIONS	
NAME	DATE

ILLINOIS DEPARTMENT OF TRANSPORTATION  
 F.A.I. 94 (DAN RYAN EXPRESSWAY)

**EXISTING AND PROPOSED PROFILE  
 SB 87th ST. EXIT RAMP**

SCALE: 1"=50' HORIZ.  
 1"=5' VERT.  
 DATE: MARCH 25, 2005

DRAWN BY: JPM  
 CHECKED BY: MPG

**TYLIN INTERNATIONAL**

03/30/2005 01:46:31 PM