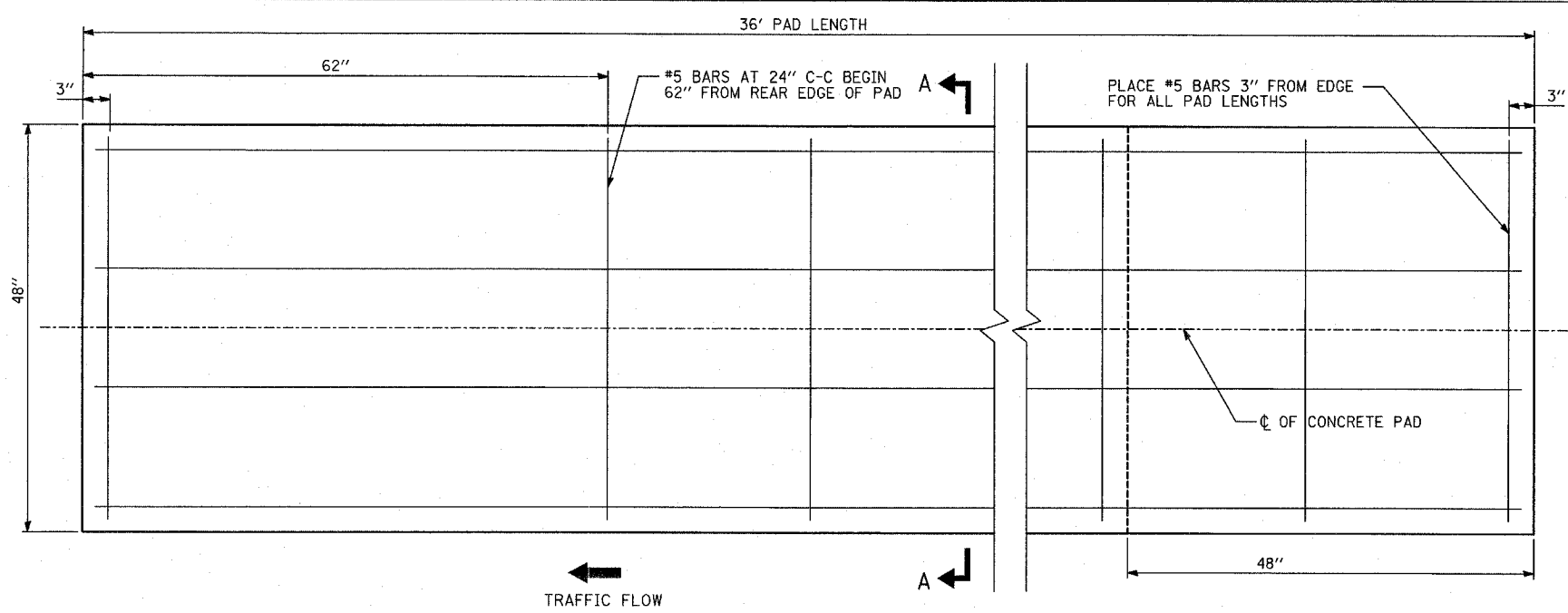
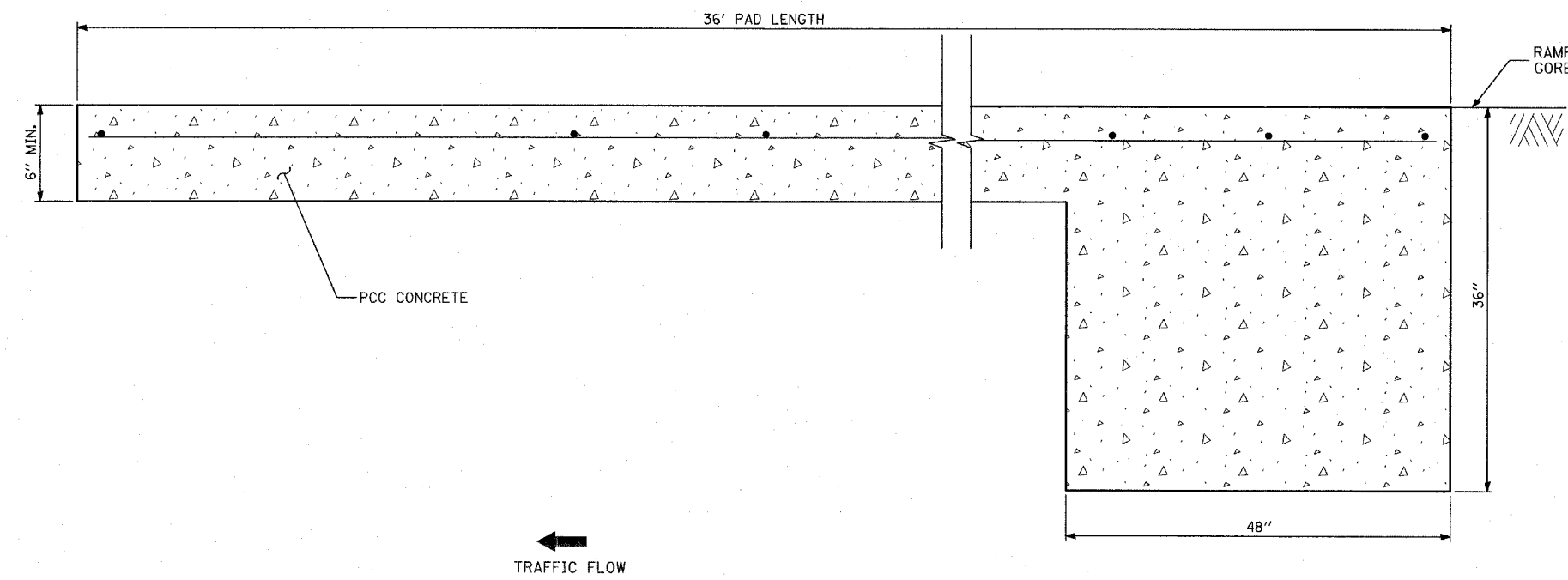


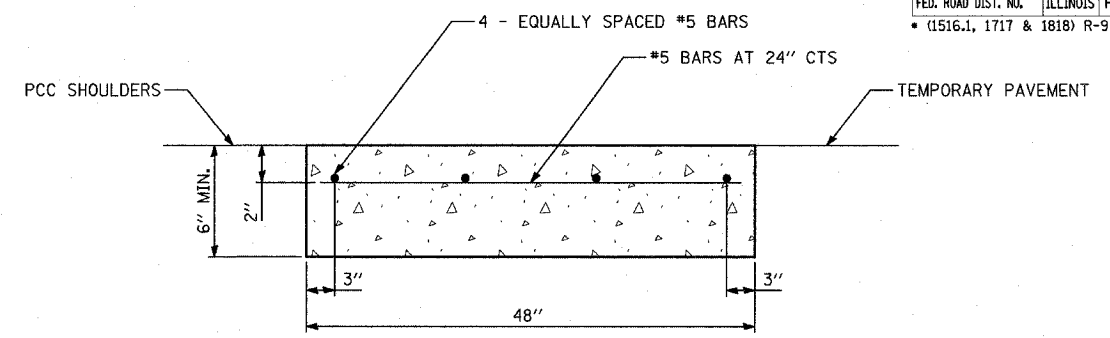
F.A.I. RTE.	SECTION	COUNTY	TOTAL SHEETS	SHEET NO.
94	94*	COOK	907	104
STA. 12009+00.00		TO STA. 1365+00		
FED. ROAD DIST. NO.		ILLINOIS FED. AID PROJECT		
• (1516.1, 1717 & 1818) R-9		62695		



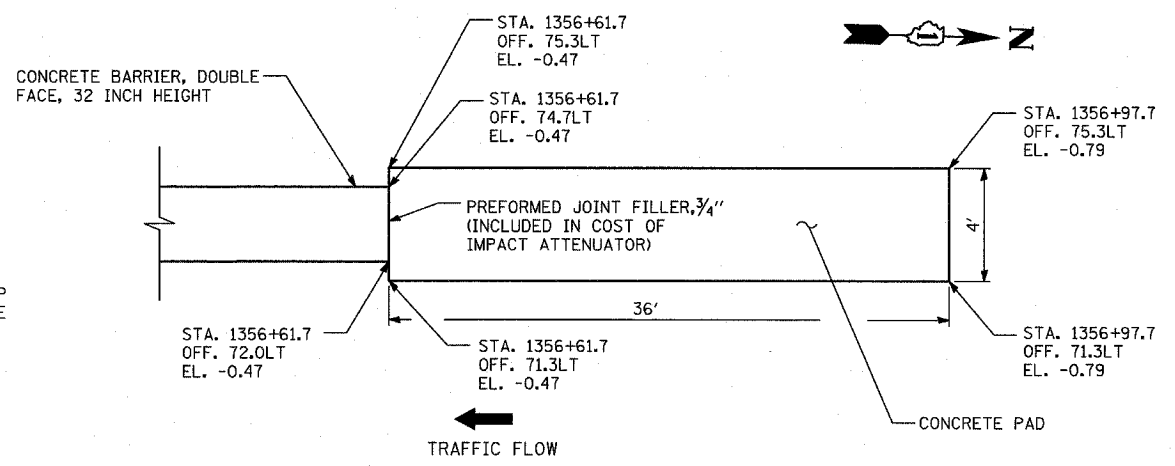
TYPICAL CONCRETE PAD PLAN VIEW



TYPICAL CONCRETE PAD ELEVATION VIEW



SECTION A-A



CONCRETE PAD SB I-94 @ 71st-75th ST C-D RAMP: PLAN VIEW

NOTE: CONCRETE PAD DRAWING INCLUDED FOR INFORMATIONAL PURPOSES ONLY. THE PAD FOR AN 11 BAY QUADGUARD ELITE SYSTEM IS DEPICTED. EXACT DIMENSIONS MUST COMPLY WITH THE MANUFACTURER'S REQUIREMENTS FOR SPECIFIED PAY ITEM: IMPACT ATTENUATOR (SEVERE USE, NARROW) TEST LEVEL 3

TYLIN INTERNATIONAL

REVISIONS	
NAME	DATE

ILLINOIS DEPARTMENT OF TRANSPORTATION  
 F.A.I. 94 (DAN RYAN EXPRESSWAY)  
 DETAIL OF CONCRETE PAD  
 FOR IMPACT ATTENUATOR (SEVERE  
 USE, NARROW) TEST LEVEL 3  
 SCALE: NONE DRAWN BY: MB  
 DATE: MARCH 25, 2005 CHECKED BY: JPM

03/30/2005 02:00:13 PM