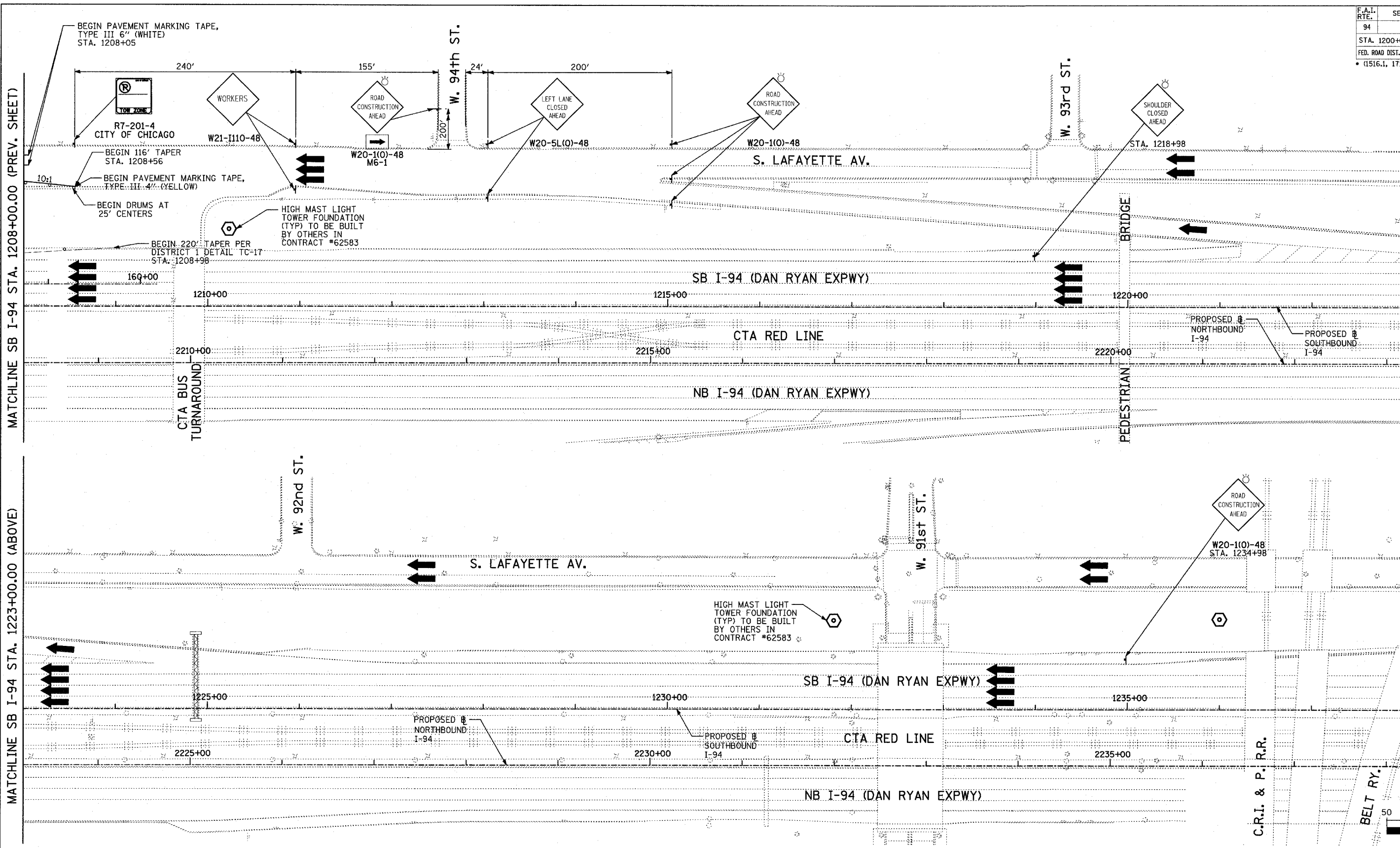
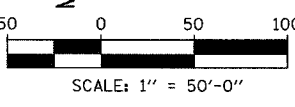
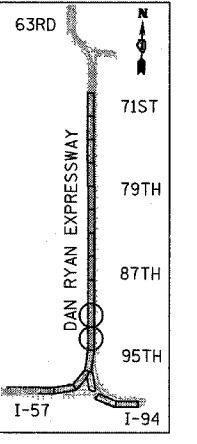


F.A.I. RTE.	SECTION	COUNTY	TOTAL SHEETS	SHEET NO.
94		COOK	905	143
STA. 1200+00.00		TO STA. 1365+00		
FED. ROAD DIST. NO.	ILLINOIS	FED. AID PROJECT		
• (1516.1, 1717 & 1818) R-9				62695



MATCHLINE SB I-94 STA. 1223+00.00 (BELOW)

MATCHLINE SB I-94 STA. 1238+00.00 (NEXT SHEET)



LEGEND:

	TEMPORARY CONCRETE BARRIER		DRUM WITH MONO-DIRECTIONAL STEADY BURNING LIGHT
	TRAFFIC LANE		ARROW BOARD
	WORK ZONE		
	BARRICADE, TYPE III		

REVISIONS	
NAME	DATE

ILLINOIS DEPARTMENT OF TRANSPORTATION
F.A.I. 94 (DAN RYAN EXPRESSWAY)
MAINTENANCE OF TRAFFIC PLAN
SB I-94 - STAGE 1
SB I-94 STA. 1208+00 TO 1238+00
SHEET 4 OF 9

SCALE: 1"=50'-0"
DATE: MARCH 25, 2005
DRAWN BY: JPA, RTM
CHECKED BY: MAG, JPM

TYLIN INTERNATIONAL

03/29/2005 02:24:14 PM