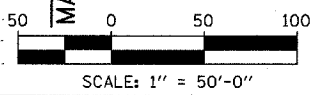
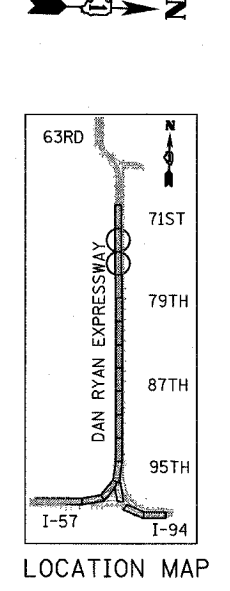
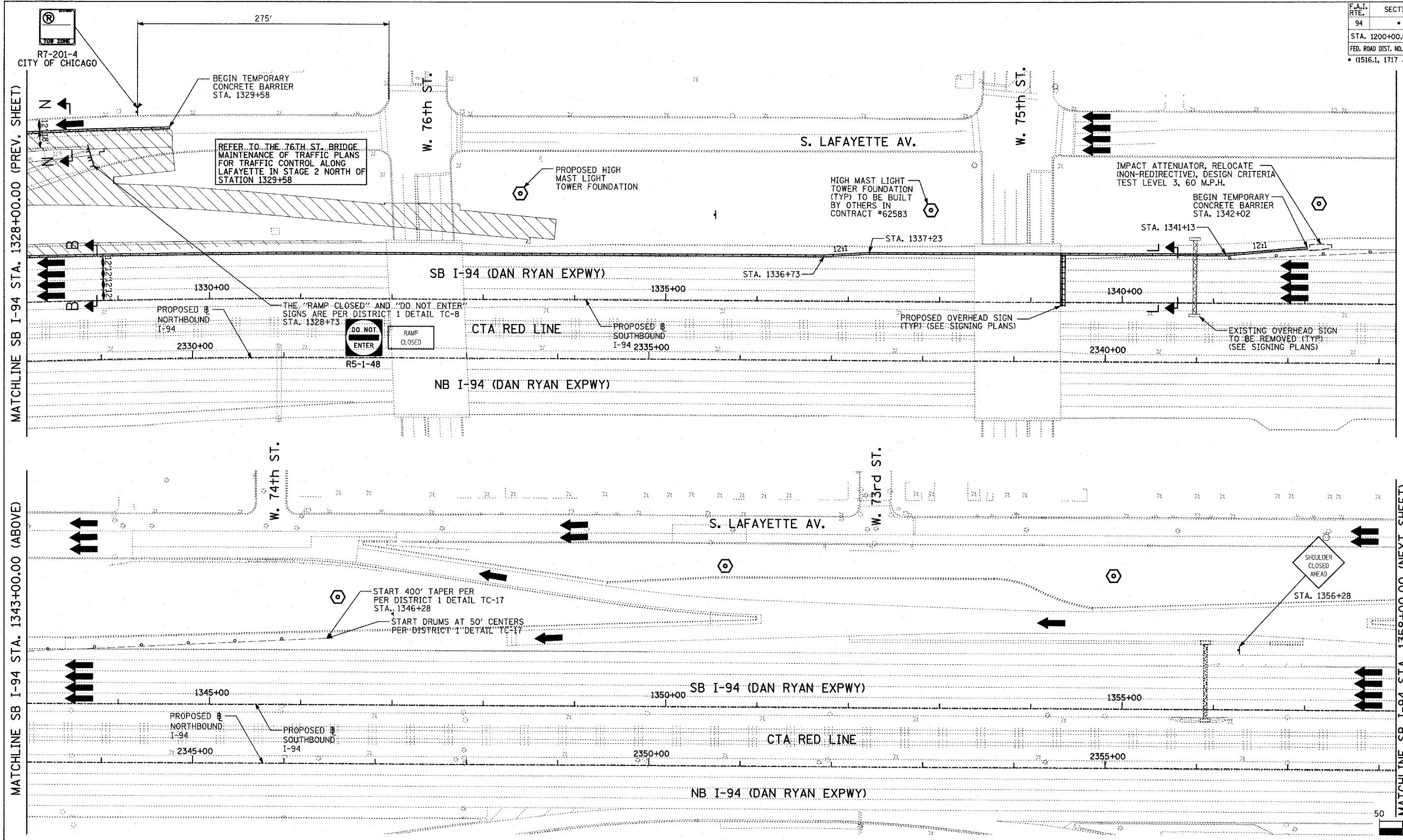


F.A.I. RTE.	SECTION	COUNTY	TOTAL SHEETS	SHEET NO.
94		COOK	905	156
STA. 1200+00.00		TO STA. 1365+00		
FED. ROAD DIST. NO.		ILLINOIS FED. AID PROJECT		
		* (1516.1, 1717 & 1818) R-9		
				62695



- LEGEND:**
- TEMPORARY CONCRETE BARRIER
 - TRAFFIC LANE
 - WORK ZONE
 - BARRICADE, TYPE III
 - DRUM WITH MONO-DIRECTIONAL STEADY BURNING LIGHT
 - ARROW BOARD

REVISIONS	
NAME	DATE

ILLINOIS DEPARTMENT OF TRANSPORTATION
F.A.I. 94 (DAN RYAN EXPRESSWAY)
MAINTENANCE OF TRAFFIC PLAN
SB I-94 - STAGE 2
SB I-94 STA. 1328+00 TO 1358+00
SHEET 8 OF 9

SCALE: 1"=50'-0"
 DATE: MARCH 25, 2005

DRAWN BY: JPA, RTM
 CHECKED BY: MAG, JPM

TYLIN INTERNATIONAL