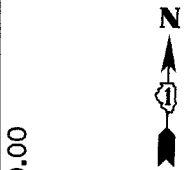
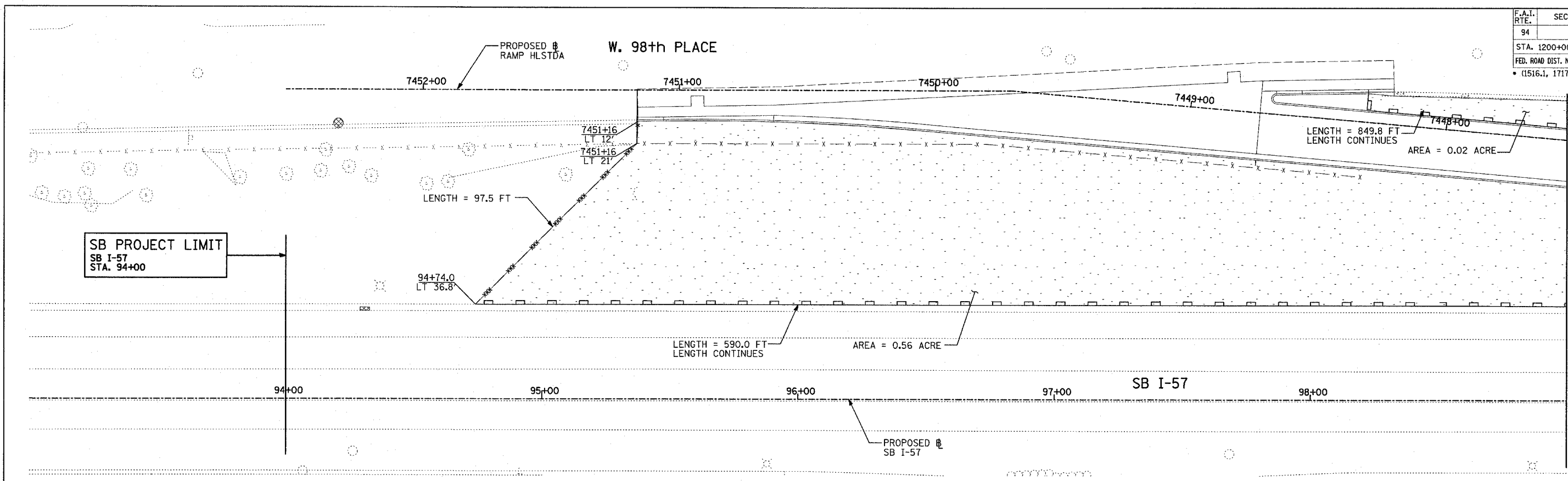
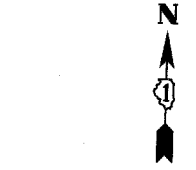
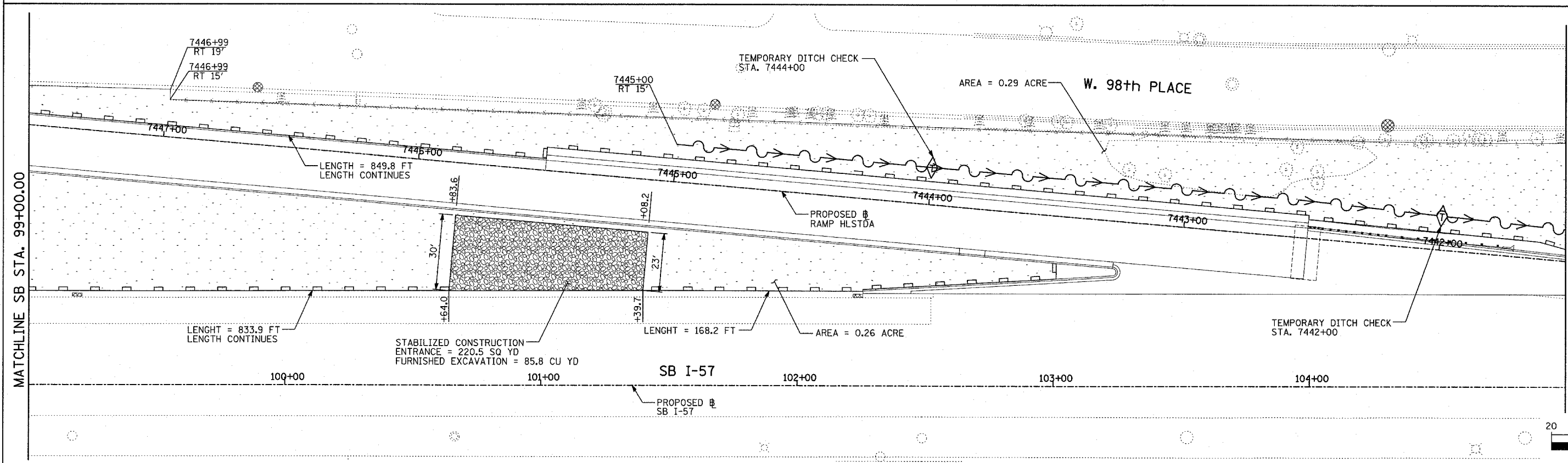


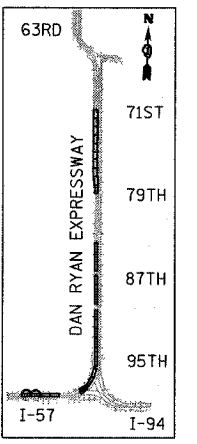
F.A.I. RTE.	SECTION	COUNTY	TOTAL SHEETS	SHEET NO.
94		COOK	907	177
STA. 1200+00.00 TO STA. 1365+00				
FED. ROAD DIST. NO.		ILLINOIS	FED. AID PROJECT	
				62695



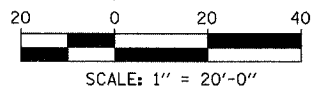
MATCHLINE SB STA. 99+00.00



MATCHLINE SB STA. 105+00.00



LOCATION MAP



MATCHLINE SB STA. 99+00.00

TYLIN INTERNATIONAL

LEGEND:

- TEMPORARY EROSION CONTROL SEEDING
- PERIMETER EROSION BARRIER
- INLET FILTER, TO BE INSTALLED IN OFF PROJECT DRAINAGE STRUCTURES ACCEPTING STORMWATER RUNOFF
- TEMPORARY FENCE
- TEMPORARY DITCH
- TEMPORARY DITCH CHECK
- TEMPORARY FENCE FOR TREE PROTECTION (15 FEET PER SIDE = 60 FEET TOTAL)

REVISIONS	
NAME	DATE

ILLINOIS DEPARTMENT OF TRANSPORTATION
 F.A.I. 94 (DAN RYAN EXPRESSWAY)
 EROSION CONTROL PLAN
 SB HALSTED STREET EXIT RAMP
 SB I-57 STA. 93+00.00 TO 105+00.00
 SHEET 1 OF 27

SCALE: 1"=20'
 DATE: MARCH 25, 2005

DRAWN BY: JPA, AH
 CHECKED BY: JPM, MAG

03/30/2005 04:25:58 PM