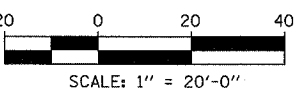
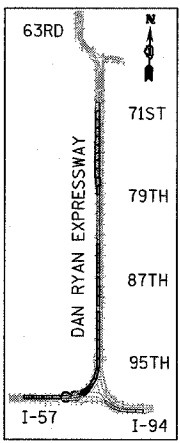
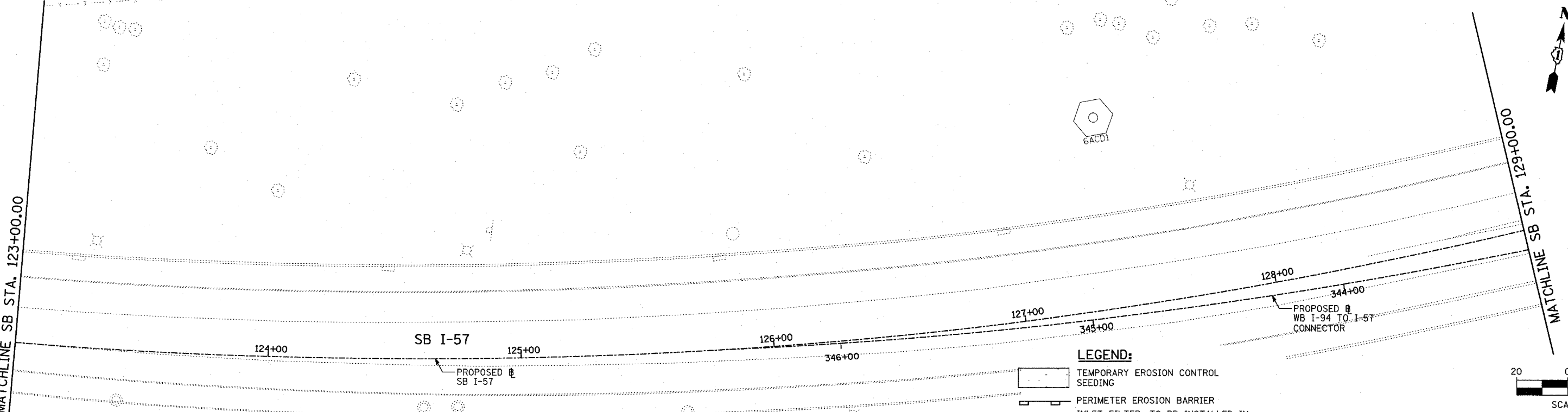
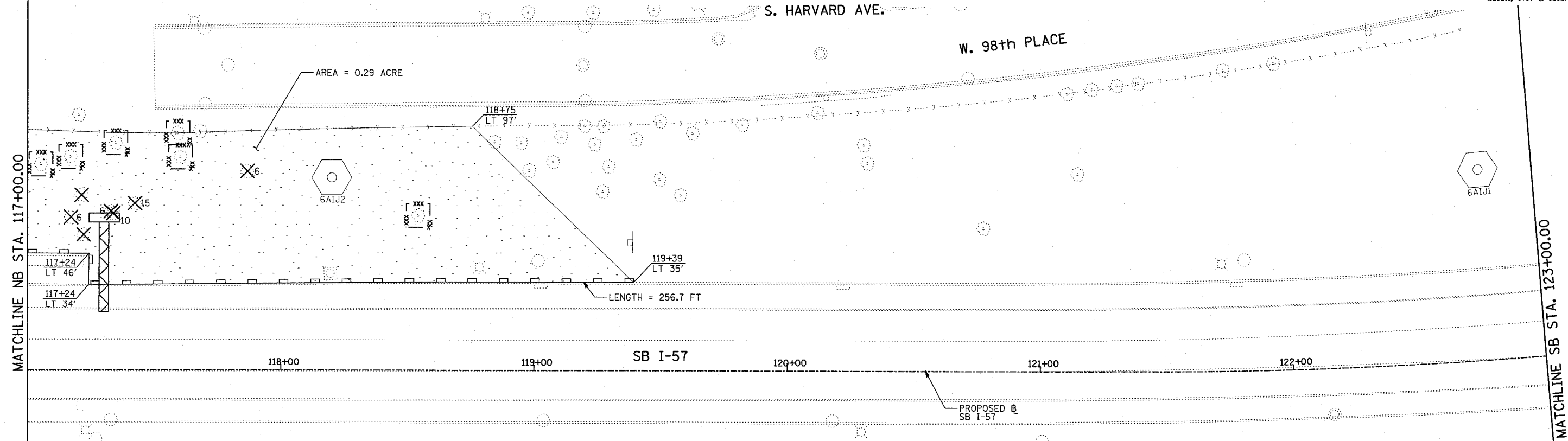


F.A.I. RTE.	SECTION	COUNTY	TOTAL SHEETS	SHEET NO.
94		COOK	907	179
STA. 1200+00.00 TO STA. 1365+00				
FED. ROAD DIST. NO.	ILLINOIS	FED. AID PROJECT		
(1516, 1717 & 1818) R-9		62695		



- LEGEND:**
- TEMPORARY EROSION CONTROL SEEDING
 - PERIMETER EROSION BARRIER
 - INLET FILTER, TO BE INSTALLED IN OFF PROJECT DRAINAGE STRUCTURES ACCEPTING STORMWATER RUNOFF
 - TEMPORARY FENCE
 - TEMPORARY DITCH
 - TEMPORARY DITCH CHECK
 - TEMPORARY FENCE FOR TREE PROTECTION (15 FEET PER SIDE = 60 FEET TOTAL)

REVISIONS	
NAME	DATE

ILLINOIS DEPARTMENT OF TRANSPORTATION
F.A.I. 94 (DAN RYAN EXPRESSWAY)
EROSION CONTROL PLAN
SB HALSTED STREET EXIT RAMP
SB I-57 STA. 117+00.00 TO 129+00.00
SHEET 3 OF 27

SCALE: 1"=20'
DATE: MARCH 25, 2005

DRAWN BY: JJS, JPA, AH
CHECKED BY: JPM, MAG

TYLININTERNATIONAL

03/30/2005 09:50:22 PM