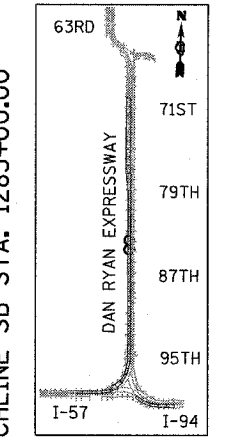
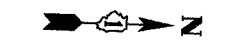
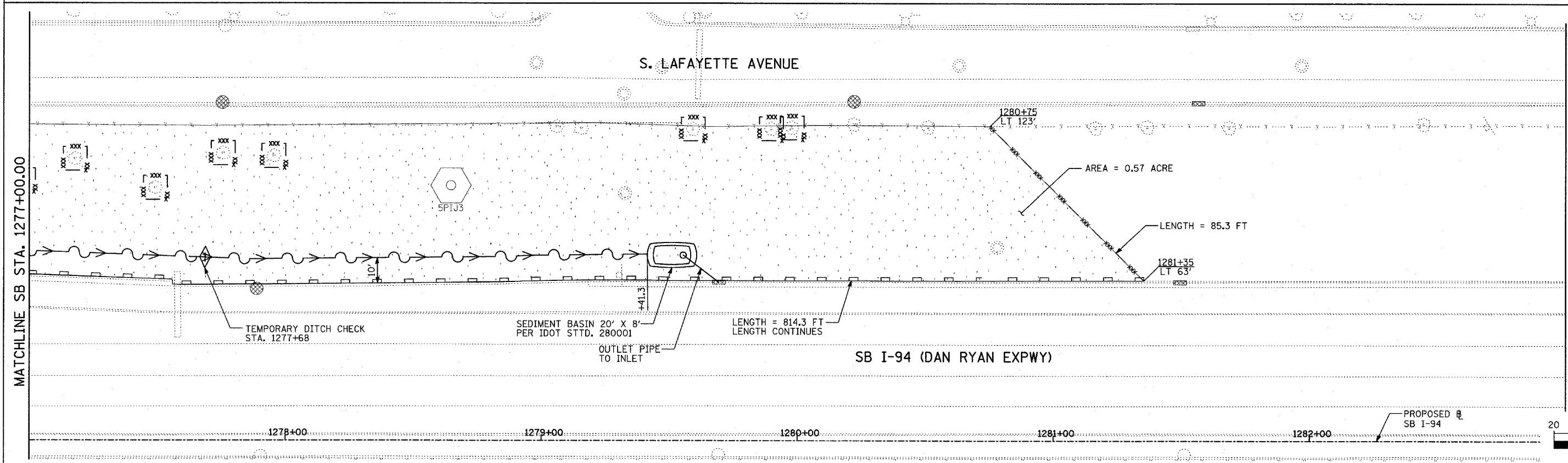
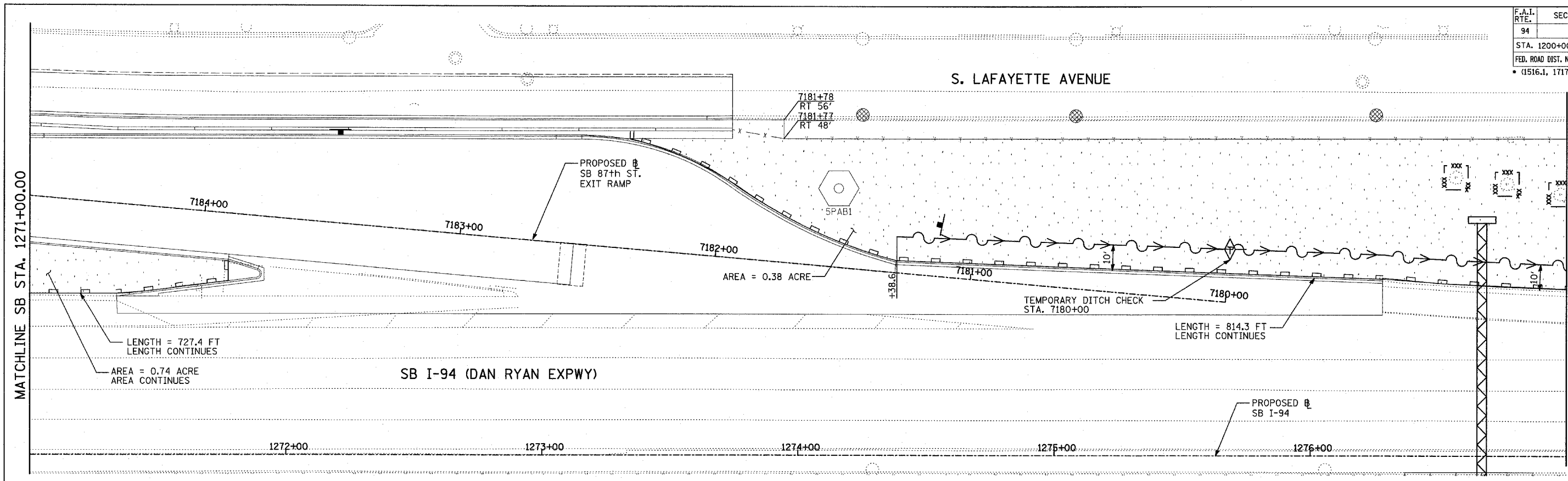
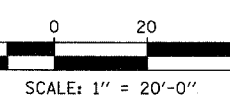


F.A.I. RTE.	SECTION	COUNTY	TOTAL SHEETS	SHEET NO.
94		COOK	907	190
STA. 1200+00.00		TO STA. 1365+00		
FED. ROAD DIST. NO.		ILLINOIS FED. AID PROJECT		
		• (1516.1, 1717 & 1818) R-9		
				62695



LOCATION MAP



MATCHLINE SB STA. 1271+00.00

MATCHLINE SB STA. 1277+00.00

MATCHLINE SB STA. 1277+00.00

MATCHLINE SB STA. 1283+00.00

TYLIN INTERNATIONAL

- LEGEND:**
- TEMPORARY EROSION CONTROL SEEDING
 - PERIMETER EROSION BARRIER
 - INLET FILTER, TO BE INSTALLED IN OFF PROJECT DRAINAGE STRUCTURES ACCEPTING STORMWATER RUNOFF
 - TEMPORARY FENCE
 - TEMPORARY DITCH
 - TEMPORARY DITCH CHECK
 - TEMPORARY FENCE FOR TREE PROTECTION (15 FEET PER SIDE = 60 FEET TOTAL)

REVISIONS	
NAME	DATE

ILLINOIS DEPARTMENT OF TRANSPORTATION
F.A.I. 94 (DAN RYAN EXPRESSWAY)
EROSION CONTROL PLAN
SB 87th STREET EXIT RAMP
SB I-94 STA. 1271+00.00 TO 1283+00.00
SHEET 14 OF 27

SCALE: 1"=20'
DATE: MARCH 25, 2005

DRAWN BY: JPA, AH
CHECKED BY: JPM, MAG

03/30/2005 09:54 PM