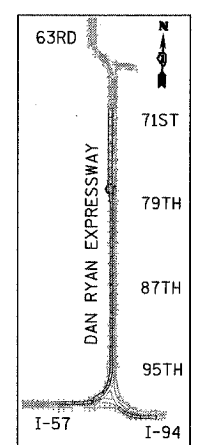
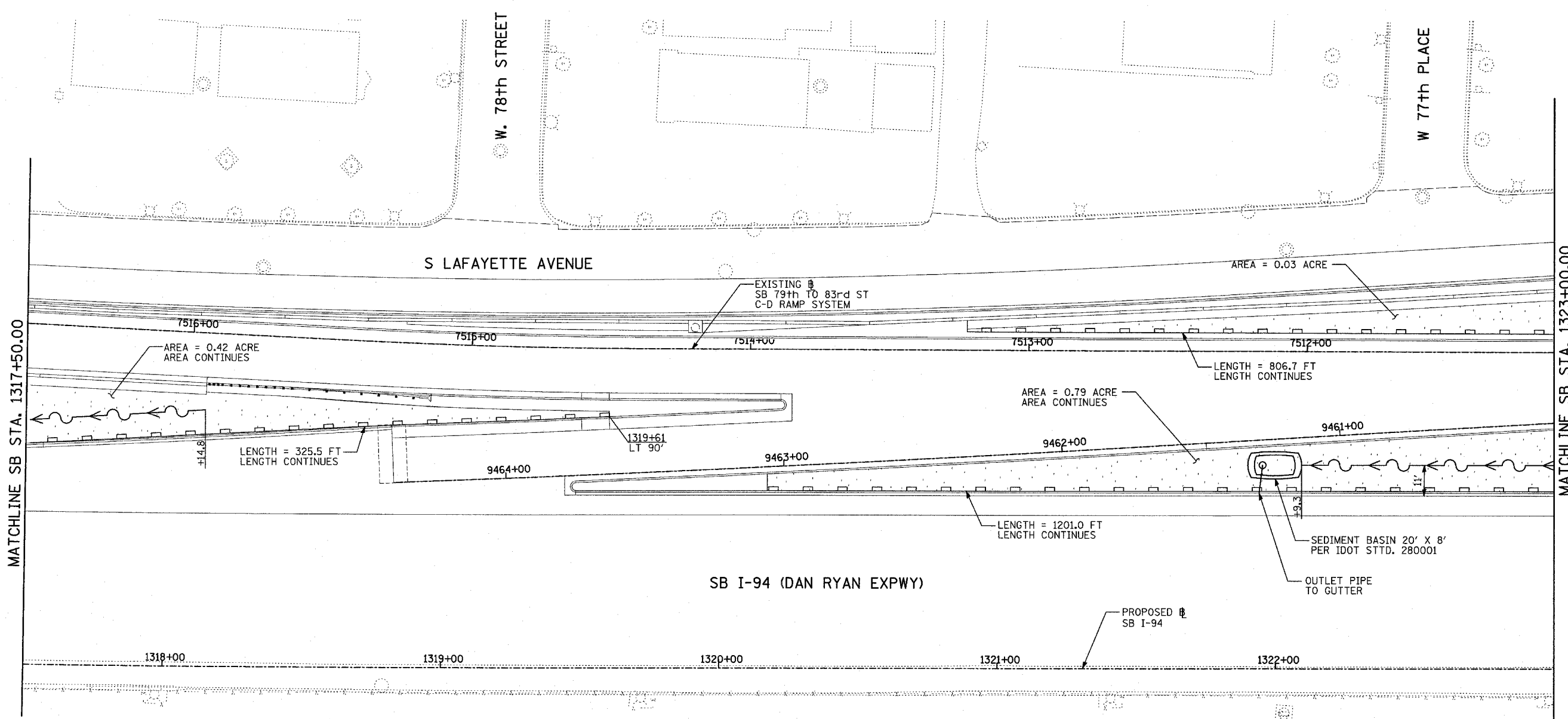
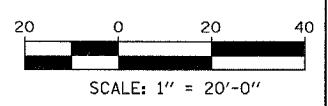


|                             |          |                  |              |           |
|-----------------------------|----------|------------------|--------------|-----------|
| F.A.I. RTE.                 | SECTION  | COUNTY           | TOTAL SHEETS | SHEET NO. |
| 94                          | *        | COOK             | 907          | 194       |
| STA. 1200+00.00             |          | TO STA. 1365+00  |              |           |
| FED. ROAD DIST. NO.         | ILLINOIS | FED. AID PROJECT |              |           |
| • (1516.1, 1717 & 1818) R-9 |          | 62695            |              |           |



LOCATION MAP



**LEGEND:**

- TEMPORARY EROSION CONTROL SEEDING
- PERIMETER EROSION BARRIER
- INLET FILTER, TO BE INSTALLED IN OFF PROJECT DRAINAGE STRUCTURES ACCEPTING STORMWATER RUNOFF
- TEMPORARY FENCE
- TEMPORARY DITCH
- TEMPORARY DITCH CHECK
- TEMPORARY FENCE FOR TREE PROTECTION (15 FEET PER SIDE = 60 FEET TOTAL)

| REVISIONS |      |
|-----------|------|
| NAME      | DATE |
|           |      |
|           |      |
|           |      |
|           |      |
|           |      |
|           |      |
|           |      |
|           |      |
|           |      |
|           |      |

ILLINOIS DEPARTMENT OF TRANSPORTATION  
 F.A.I. 94 (DAN RYAN EXPRESSWAY)  
 EROSION CONTROL PLAN  
 SB 76th TO 79th ST C-D RAMP SYSTEM  
 SB I-94 STA. 1317+50.00 TO 1323+00.00  
 SHEET 18 OF 27

SCALE: 1" = 20'  
 DATE: MARCH 25, 2005  
 DRAWN BY: JPA, AH  
 CHECKED BY: JPM, MAG

**TYLIN** INTERNATIONAL