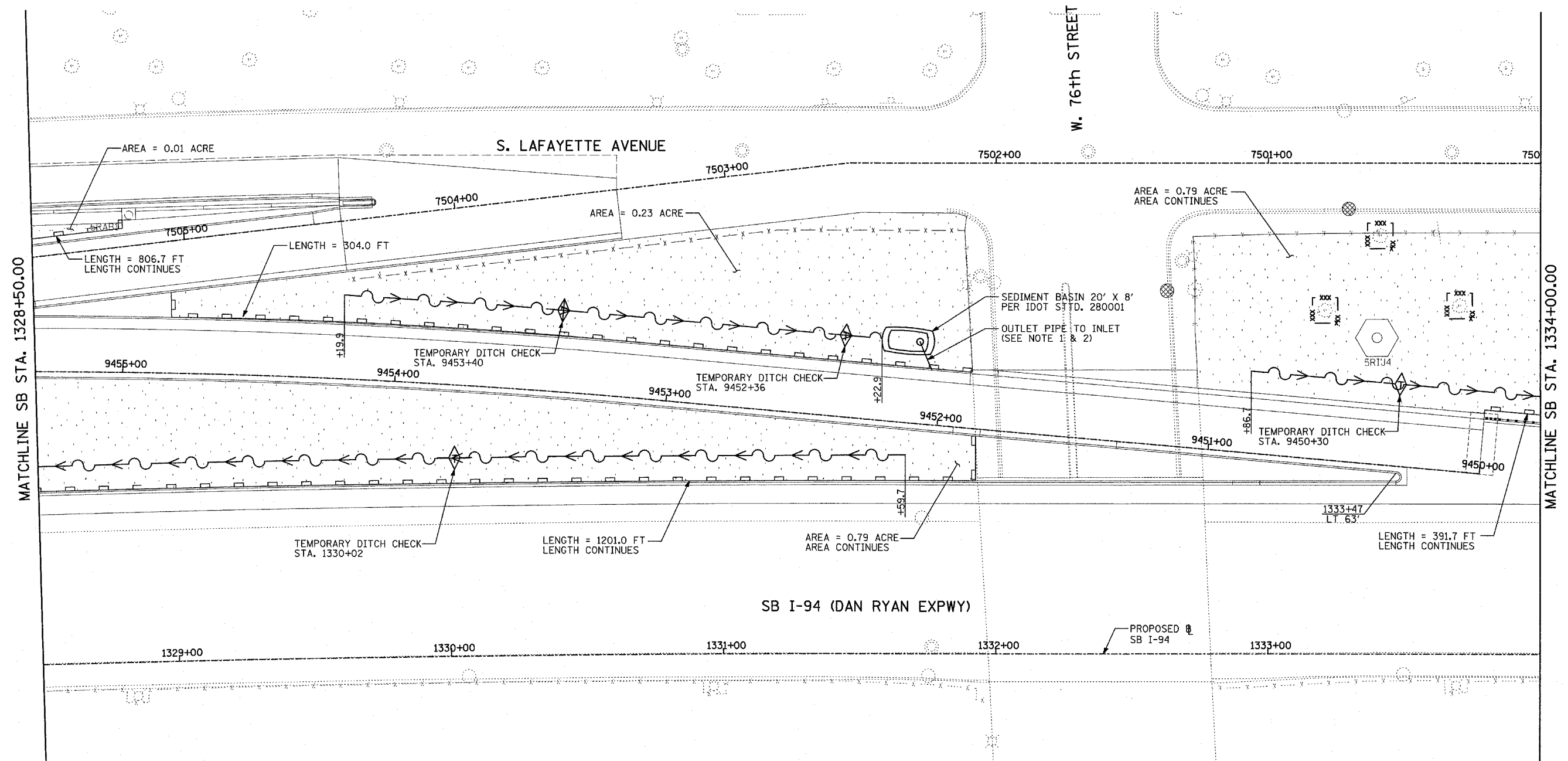


F.A.I. RTE.	SECTION	COUNTY	TOTAL SHEETS	SHEET NO.
94	*	COOK	907	196
STA. 1200+00.00		TO STA. 1365+00		
FED. ROAD DIST. NO.		ILLINOIS FED. AID PROJECT		
• (1516.1, 1717 & 1818) R-9		62695		

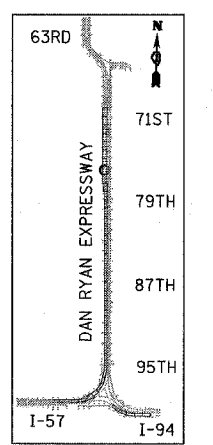


MATCHLINE SB STA. 1328+50.00

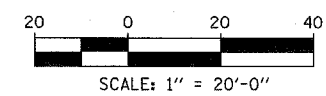
MATCHLINE SB STA. 1334+00.00

- NOTES:**
- UPON COMPLETION OF PROPOSED DRAINAGE SYSTEM, CONNECT OUTLET TO PROPOSED DRAINAGE STRUCTURE #2613 (SEE DRAINAGE AND UTILITY PLAN).
 - DURING CONSTRUCTION OF DRAINAGE SYSTEM, ALL OVERFLOW MUST BE FILTERED PER IDOT STD. 280001.

- LEGEND:**
- TEMPORARY EROSION CONTROL SEEDING
 - PERIMETER EROSION BARRIER
 - INLET FILTER, TO BE INSTALLED IN OFF PROJECT DRAINAGE STRUCTURES ACCEPTING STORMWATER RUNOFF
 - TEMPORARY FENCE
 - TEMPORARY DITCH
 - TEMPORARY DITCH CHECK
 - TEMPORARY FENCE FOR TREE PROTECTION (15 FEET PER SIDE = 60 FEET TOTAL)



LOCATION MAP



REVISIONS	
NAME	DATE

ILLINOIS DEPARTMENT OF TRANSPORTATION
 F.A.I. 94 (DAN RYAN EXPRESSWAY)
 EROSION CONTROL PLAN
 SB 76th TO 79th ST C-D RAMP SYSTEM
 SB I-94 STA. 1328+50.00 TO 1334+00.00
 SHEET 20 OF 27

SCALE: 1"=20'
 DATE: MARCH 25, 2005

DRAWN BY: JPA, AH
 CHECKED BY: JPM, MAG

TYLIN INTERNATIONAL

03/30/2005 01:21:28 PM