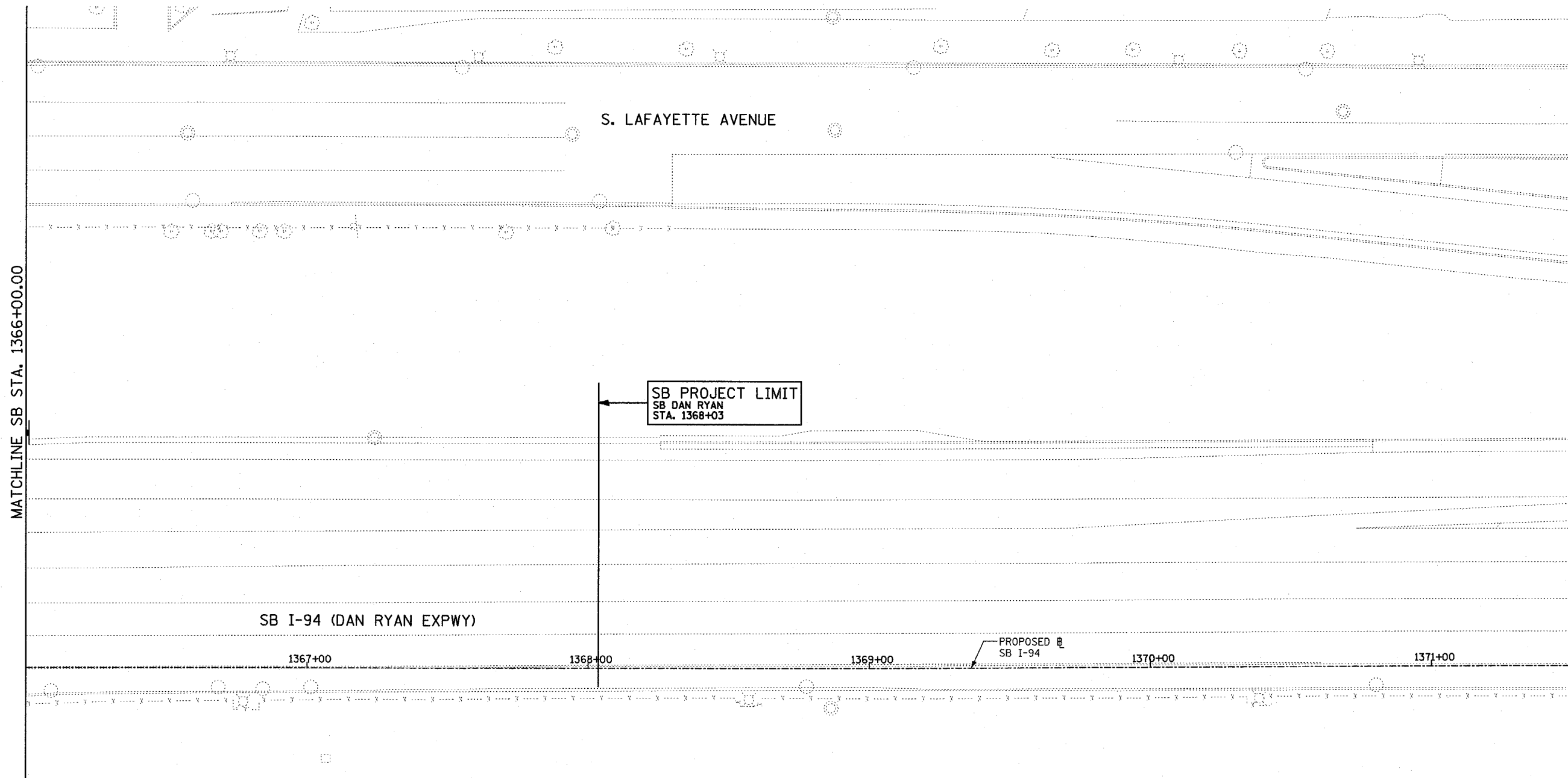
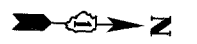


F.A.I. RTE.	SECTION	COUNTY	TOTAL SHEETS	SHEET NO.
94	.	COOK	907	203
STA. 1200+00.00		TO STA. 1365+00		
FED. ROAD DIST. NO.	ILLINOIS	FED. AID PROJECT		
(1516.1, 1717 & 1818) R-9				62695



SB I-94 (DAN RYAN EXPWY)

S. LAFAYETTE AVENUE

SB PROJECT LIMIT
SB DAN RYAN
STA. 1368+03

PROPOSED SB I-94

1367+00

1368+00

1369+00

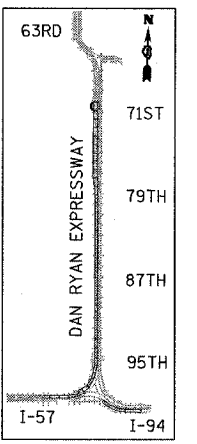
1370+00

1371+00

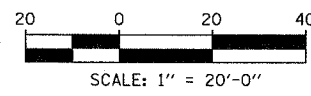
NO WORK
THIS SHEET

LEGEND:

- TEMPORARY EROSION CONTROL SEEDING
- PERIMETER EROSION BARRIER
- INLET FILTER, TO BE INSTALLED IN OFF PROJECT DRAINAGE STRUCTURES ACCEPTING STORMWATER RUNOFF
- TEMPORARY FENCE
- TEMPORARY DITCH
- TEMPORARY DITCH CHECK
- TEMPORARY FENCE FOR TREE PROTECTION (15 FEET PER SIDE = 60 FEET TOTAL)



LOCATION MAP



REVISIONS	
NAME	DATE

ILLINOIS DEPARTMENT OF TRANSPORTATION
F.A.I. 94 (DAN RYAN EXPRESSWAY)
EROSION CONTROL PLAN
SB 71st TO 75th ST C-D RAMP SYSTEM
SB I-94 STA. 1366+00.00 TO 1368+03.00
SHEET 27 OF 27

SCALE: 1"=20'
DATE: MARCH 25, 2005
DRAWN BY: JPA
CHECKED BY: JPM, MAG

TYLIN INTERNATIONAL

03/25/2005 04:23:46 PM