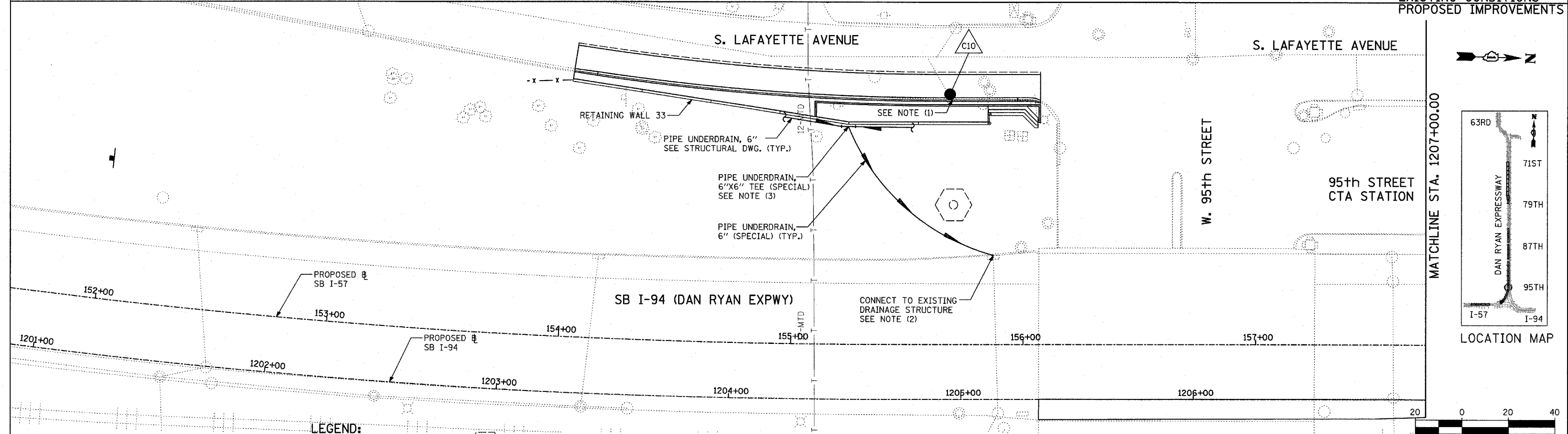


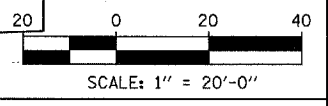
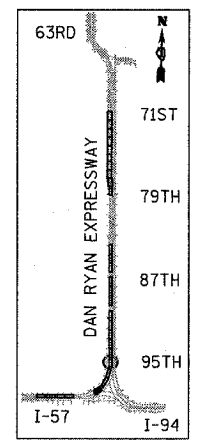
EXISTING CONDITIONS  
 PROPOSED IMPROVEMENTS



**LEGEND:**

	EXISTING COMBINED SEWER		HIGH MAST LIGHT TOWER FOUNDATION (BY OTHERS - SEE CONTRACT 62583)
	PROPOSED STORM SEWER NUMBER (X=SHEET NO., Y=PIPE NO.)		HIGH MAST LIGHT TOWER FOUNDATION, WALL MOUNTED
	PROPOSED STRUCTURE NUMBER (X=SHEET NO., Y=STRUCTURE NO.)		HIGH MAST LIGHT TOWER FOUNDATION (BY OTHERS - SEE CONTRACT 62583)
	PIPE STUBOUT TO BE PLUGGED		F.V. FIELD VERIFY
	UTILITY REMOVAL		
	UTILITY REMOVAL PLUG		

- NOTES:**
- CONNECT TO EXISTING CDWM COMBINED SEWER. SEE COMBINED SEWER DRAINAGE SCHEDULE FOR DETAILS (TYP.).
  - CORE DRILL AND CONNECT TO EXISTING DRAINAGE STRUCTURE. CONNECTION COST SHALL BE INCLUDED IN THE COST OF THE PUD, 6" (SPECIAL).
  - ALL TEES AND ELBOWS/BENDS FOR PUD, 6" (SPECIAL) SHALL BE INCLUDED IN COST OF PUD, 6" (SPECIAL).



**TYLIN INTERNATIONAL**

REVISIONS	
NAME	DATE
REVISIONED	04/15/05

ILLINOIS DEPARTMENT OF TRANSPORTATION  
 F.A.I. 94 (DAN RYAN EXPRESSWAY)  
 DRAINAGE AND UTILITY PLANS  
 SB 95th STREET EXIT RAMP  
 SB I-94 STA. 1201+00.00 TO 1207+00.00

SCALE: 1"=20'  
 DATE: MARCH 25, 2005

DRAWN BY: MB  
 CHECKED BY: DA