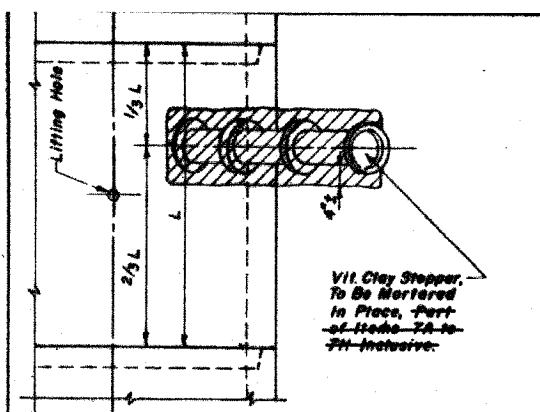
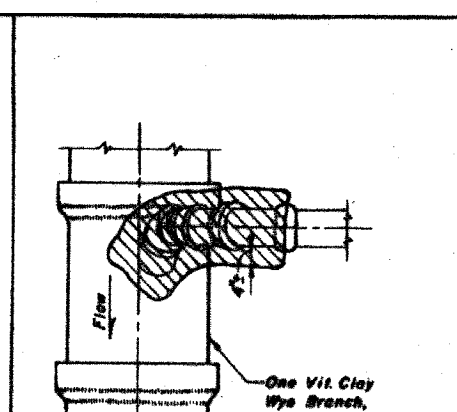


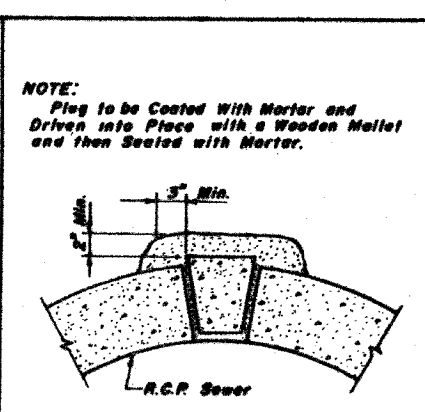
PLAN



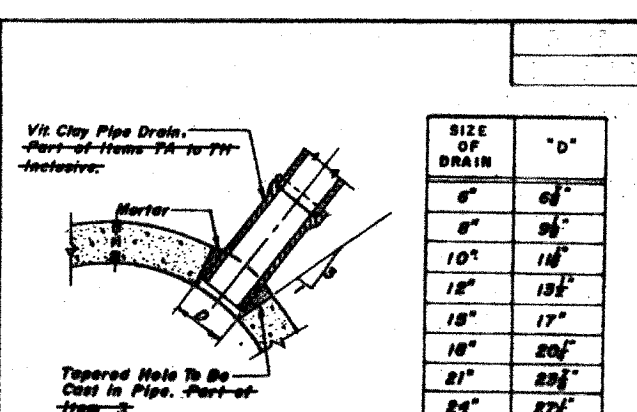
PLAN



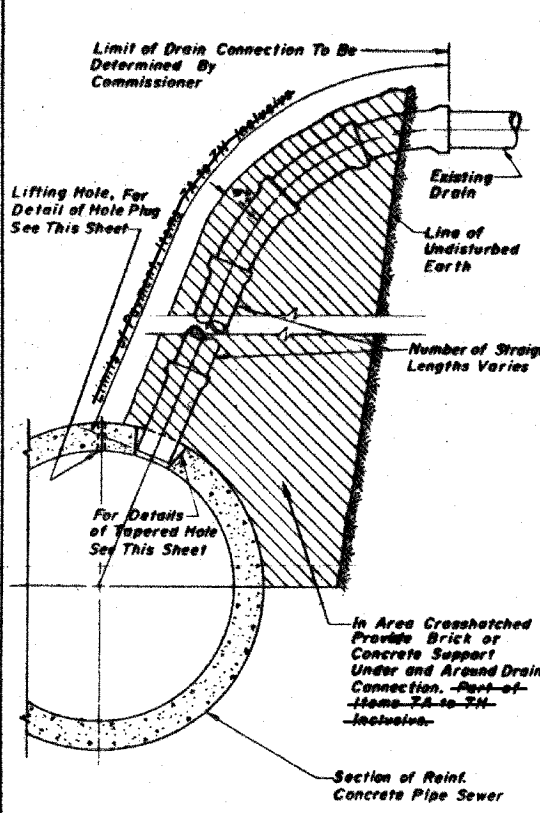
PLAN



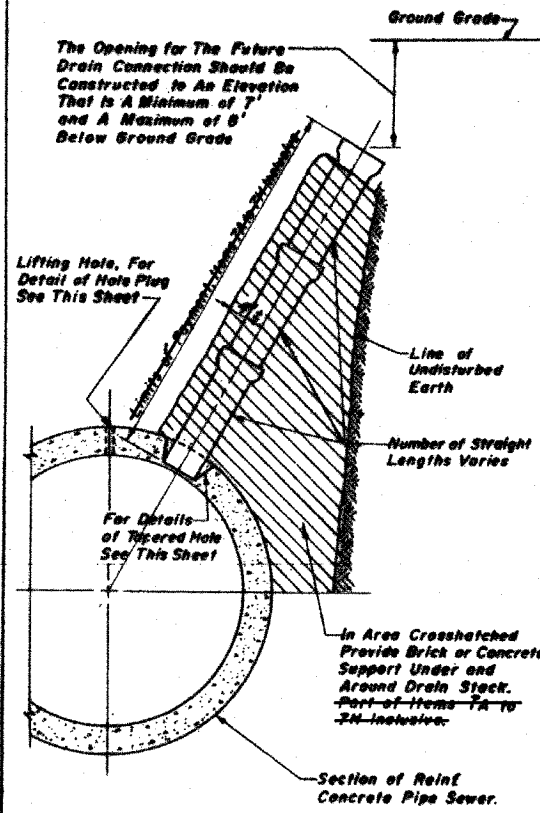
LIFTING HOLE PLUG DETAIL FOR CONCRETE PIPE



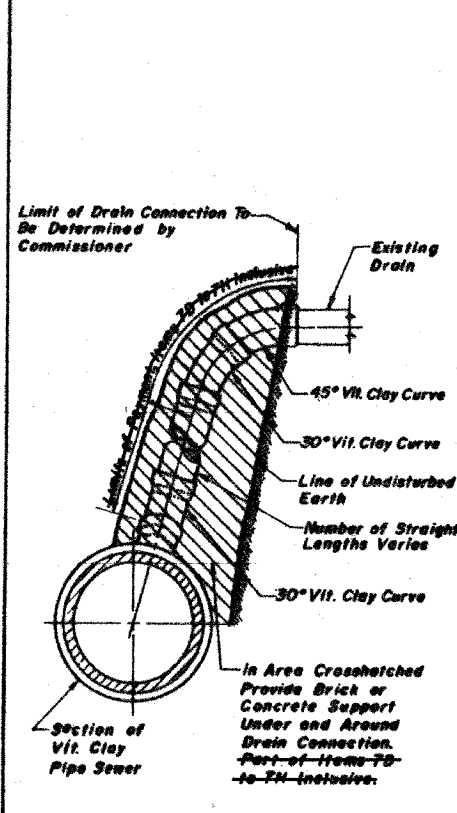
DETAIL OF TAPERED HOLE



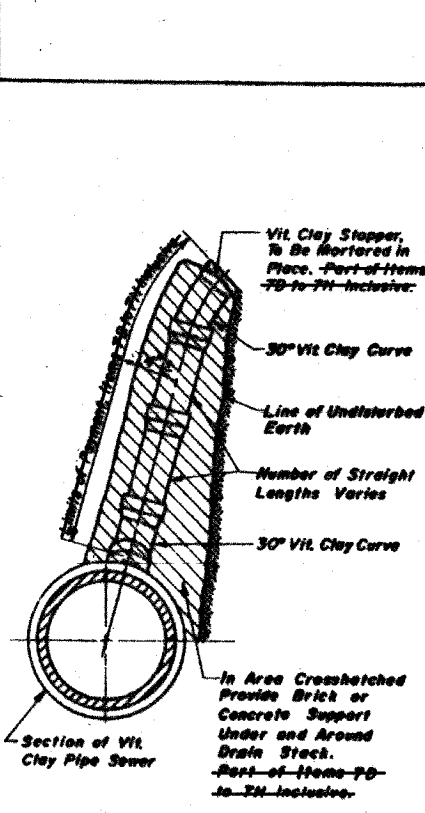
ELEVATION
TYPICAL DRAIN CONNECTIONS FOR EXISTING DRAINS



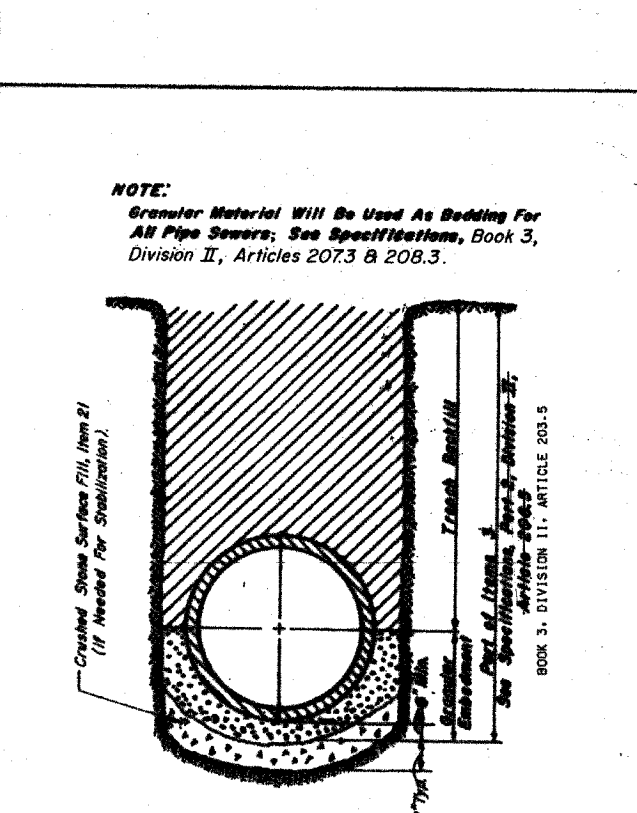
ELEVATION
TYPICAL DRAIN STACKS FOR FUTURE USE



ELEVATION
TYPICAL DRAIN CONNECTIONS FOR EXISTING DRAINS



ELEVATION
TYPICAL DRAIN STACKS FOR FUTURE USE



DETAIL OF GRANULAR EMBEDMENT AND STABILIZATION FOR PIPE SEWER

DRAWN BY **REPRODUCTION**
CHECKED BY _____



All Drain Connection Joints Must Be Made With Oaken and Mortar As Specified in Specifications, Part 2, Article 210.5, BOOK 3, DIVISION II, ARTICLE 207.3 FOR DUCTILE IRON PIPE DRAIN CONNECTIONS SEE SHEET NO. 8 OF 10

REVISIONS	
DATE	DESCRIPTION
5/26/01	PRELIMINARY PLAN
	APPROVED PLAN

CITY OF CHICAGO
DEPARTMENT OF WATER MANAGEMENT
BUREAU OF ENGINEERING SERVICES
VITRIFIED CLAY PIPE DRAIN CONNECTIONS
SCALE: AS SHOWN
CONTRACT SHEET NO.

NOTE: THESE DRAWINGS ARE FOR INFORMATIONAL PURPOSES ONLY. ALL REFERENCES TO PAY ITEMS OR PAY LIMITS SHOULD BE IGNORED. SEE SPECIAL PROVISIONS FOR PAY ITEMS.

TYLIN INTERNATIONAL

REVISIONS	
NAME	DATE

ILLINOIS DEPARTMENT OF TRANSPORTATION
F.A.I. 94 (DAN RYAN EXPRESSWAY)
CITY OF CHICAGO
DEPARTMENT OF WATER MANAGEMENT
SEWER RELOCATION DETAIL
(SHEET 9 OF 9)
SCALE: NONE
DATE: MARCH 25, 2005
DRAWN BY: MB
CHECKED BY: MPG