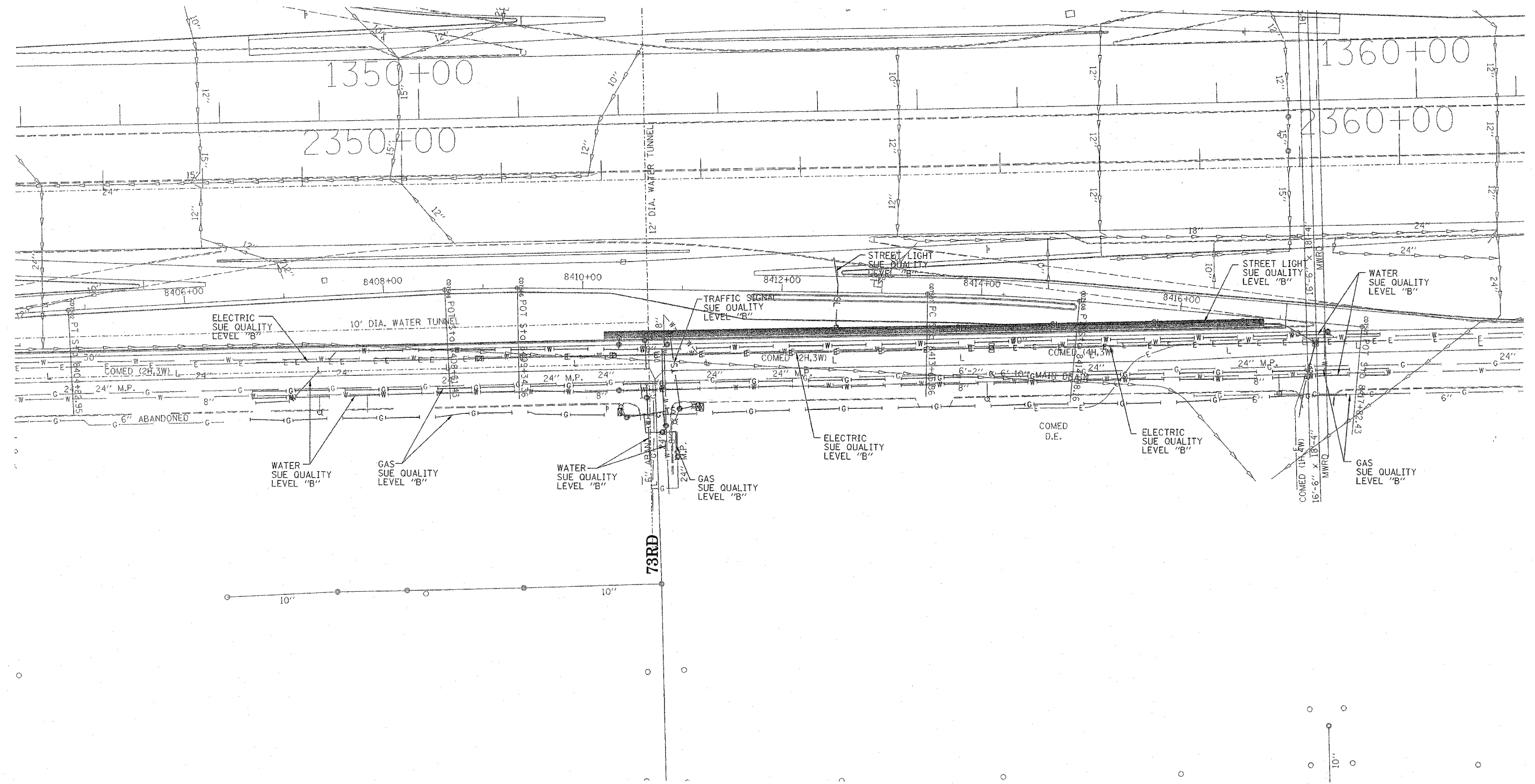
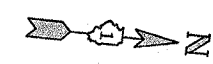


F.A. RTE.	SECTION	COUNTY	TOTAL SHEETS	SHEET NO.
0516,1717 & 1818-6		Cook	907	294
STA.	TO STA.			
FED. ROAD DIST. NO.	ILLINOIS	FED. AID PROJECT		




TBE GROUP, INC.
 CIVIL ENGINEERING * TRANSPORTATION * ENVIRONMENTAL
 * PLANNING * UTILITY ENGINEERING/LOCATING
 SOUTHERN REGION: FL, GA, SC, NC
 NORTHERN REGION: IL, IN, MI, OH, MD, NJ, NY
 PA, VA, CANADA
 WESTERN REGION: AZ, NV, NM, TX, CA, OR, UT, WA

IL09500167, 168, 170, 171, 179, 180, 204, 205,
 206, 211, 212, 219, 221, 225
 TBE SUE PAGE NO: 15 of 30
 Checked by: *S. A. [Signature]*
 SUE Quality Level "A" : Test Holes
 SUE Quality Level "B" : Designating

—TS—	—TS—	TRAFFIC SIGNAL
—SL—	—SL—	STREET LIGHT
—COCE—		CITY OF CHICAGO ELECTRIC
—T—	—T—	TELEPHONE
—W—	—W—	WATER
—G—	—G—	GAS
—CTV—	—CTV—	CABLE TELEVISION
—FO—	—FO—	FIBER OPTIC
—E—	—E—	ELECTRIC
●		TEST HOLE

Utilities shown on these plans as depicted in the legend have been investigated by TBE Group, Inc in accordance with SUE Industry Standards. All other information shown has been provided to TBE Group, Inc by others.


 205 W. WACKER DRIVE
 SUITE 1020
 CHICAGO, IL 60606
 (312) 704-1970

REVISIONS	
NAME	DATE

ILLINOIS DEPARTMENT OF TRANSPORTATION
 SUE Investigation of Underground Utilities
 I-94 NB & SB of Dan Ryan Expressway
 From I-57 to 43rd Street
 Contract No: 62586, 62589, 62590, 62594, 62693
 SOL "B" DATE : 7/22/04
 DRAWN BY : KLC
 SCALE : 1" = 50'

TBE could not locate buried utilities directly beneath the expressway due to traffic and safety issues.