

F.A.I. RTE.	SECTION	COUNTY	TOTAL SHEETS	SHEET NO.
94	*	COOK	907	336
STA. --- TO STA. ---		FED. ROAD DIST. NO. 1 ILLINOIS FED. AID PROJECT		
* (1516, 1, 1717 & 1818) R-9		62695		

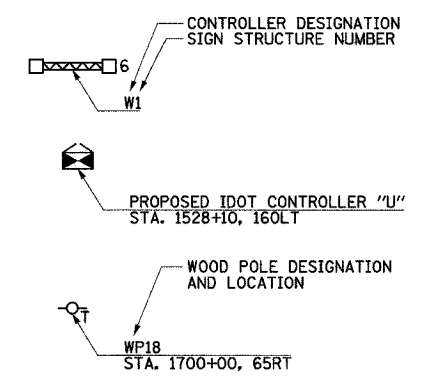
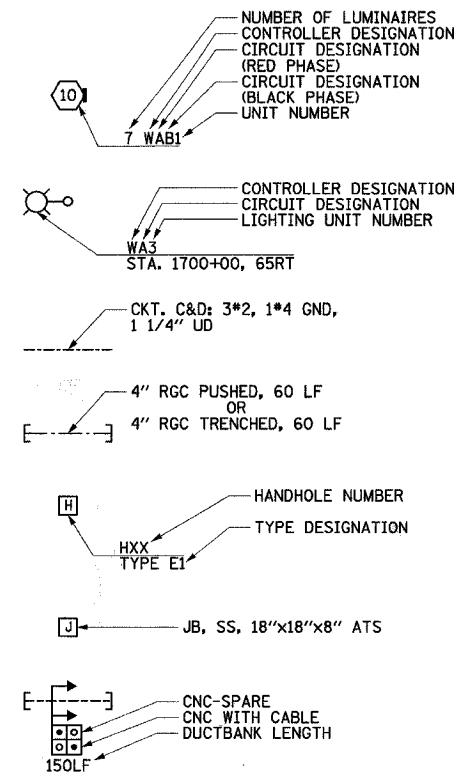
ELECTRICAL SYMBOLS FOR PROPOSED WORK

GENERAL ELECTRICAL CALLOUTS

- LIGHT TOWER FOUNDATION
NUMBER INSIDE HEXAGON INDICATES TOWER TYPE
HANDHOLE LOCATION AS INDICATED
TOWER INSTALLED BY OTHERS,
UNDER A SEPARATE CONTRACT
TYPE - TOWER HEIGHT
10 - 100 FEET
11 - 110 FEET
12 - 120 FEET
- LIGHT POLE FOUNDATION, SINGLE MAST ARM
(POLE AND LUMINAIRE NIC)
- LIGHT POLE FOUNDATION, TWIN MAST ARM
(POLE AND LUMINAIRE NIC)
- TEMPORARY LIGHTING UNIT INCLUDING 60 FOOT
WOOD POLE (CLASS 4), 8'-0" MAST ARM WITH
400 WATT HPS LUMINAIRE
- ELECTRIC HANDHOLE: TYPE AS INDICATED
TYPE E1: PC CONCRETE, 21.5"x21.5"x30"
IDOT STANDARD 814001
TYPE E2: PC CONCRETE-HEAVY DUTY, 22"x22"x30",
IDOT STANDARD 814001
TYPE C1: COMMUNICATIONS VAULT
TYPE S1: PC CONCRETE-HEAVY DUTY, 22"x22"x36"
TYPE S1 (SPECIAL): PC CONCRETE-HEAVY DUTY, 22"x22"x36"
TYPE S2: PC CONCRETE-HEAVY DUTY SPECIAL,
30"x30"x36"
- JUNCTION BOX: TYPE AND SIZE AS INDICATED
ON PLANS
- FIBER OPTIC COMMUNICATIONS HUT
- LIGHTED SIGN STRUCTURE-CANTILEVER TYPE
(NUMBER OF FLUORESCENT FIXTURES AS
INDICATED WITH ASSOCIATED DISCONNECT
SWITCH - TYP.) (N.I.C.)

- LIGHTED SIGN STRUCTURE-TRUSS TYPE (N.I.C.)
- TEMPORARY LIGHTED SIGN STRUCTURE-TRUSS
TYPE, QUANTITY OF LUMINAIRES AS SHOWN
ON SIGNING PLANS
- LIGHTED SIGN STRUCTURE-BRIDGE MOUNT TYPE (N.I.C.)
- DYNAMIC MESSAGE SIGN (N.I.C.)
- FLASHING BEACON SIGN (N.I.C.)
- CLOSED CIRCUIT TELEVISION CAMERA (N.I.C.)
- MICROWAVE DETECTOR (N.I.C.)
- DETECTOR LOOP
- CONTROLLER CABINET FOUNDATION
- CONTROLLER CABINET FOUNDATION: SURVEILLANCE
- CONTROLLER CABINET FOUNDATION: SURVEILLANCE,
TYPE 334
- RAMP METER SIGNAL POLE/HEAD FOUNDATION
- RAMP METER FLASHER FOUNDATION
- TEMPORARY WOOD POLE, 50 FOOT LENGTH
(10 FOOT BURIED, 40 FOOT INSTALLED HEIGHT)
- HIGHWAY ADVISORY RADIO ANTENNA (N.I.C.)
- ELECTRIC UTILITY POLE
- CCTV CAMERA POLE (N.I.C.)

- POLE MOUNTED ELECTRIC UTILITY TRANSFORMER(S)
- PAD MOUNTED ELECTRIC UTILITY TRANSFORMER
- GROUND ROD
- MAIN SERVICE FUSED DISCONNECT SWITCH
(RATING AS INDICATED)
- EXISTING RACEWAY OR CONDUIT RUN
AS INDICATED ON PLANS
- RACEWAY EMBEDDED IN STRUCTURE
- RACEWAY OR DIRECT BURIAL CABLE
UNDERGROUND WITHOUT ENCASEMENT
- RIGID GALVANIZED STEEL CONDUIT
SLEEVE, TRENCHED OR PUSHED
- UNDERGROUND REINFORCED CONCRETE ENCASED
CNC DUCTBANK, UNO. (NUMBER AND SIZE OF
DUCTS AS SHOWN)
- RACEWAY OR CONDUIT IN TRENCH, TYPE AS
INDICATED ON PLANS
- AERIAL CABLE, TYPE AS INDICATED ON PLANS
- CONDUIT TURNED DOWN
- CONDUIT TURNED UP



ELECTRICAL SYMBOLS FOR EXISTING CONDITIONS

- EXISTING LIGHTING UNIT, TWIN LUMINAIRE
- EXISTING LIGHTING UNIT
- EXISTING TEMPORARY LIGHTING UNIT
- EXISTING CDOT LIGHTING UNIT
- EXISTING UNDERPASS LUMINAIRE
- EXISTING ELECTRIC HANDHOLE
- EXISTING JUNCTION BOX
- EXISTING PULL BOX
- EXISTING TELEPHONE CONNECTION
- EXISTING FIBER OPTIC COMMUNICATIONS HUT
- EXISTING ELECTRIC HANDHOLE/MANHOLE

- EXISTING CDOT ELECTRIC HANDHOLE/MANHOLE
- EXISTING LIGHTED SIGN STRUCTURE-CANTILEVER TYPE
- EXISTING LIGHTED SIGN STRUCTURE-TRUSS TYPE
- EXISTING LIGHTED SIGN STRUCTURE-BRIDGE MOUNT TYPE
- EXISTING DYNAMIC MESSAGE SIGN
- EXISTING FLASHING BEACON SIGN
- EXISTING CLOSED CIRCUIT TELEVISION CAMERA
- EXISTING MICROWAVE DETECTOR
- EXISTING DETECTOR LOOP
- EXISTING LIGHTING CONTROLLER, DUPLEX
- EXISTING CONTROLLER CABINET
- EXISTING RAMP METER SIGNAL POLE/HEAD

- EXISTING RAMP METER FLASHER
- EXISTING HIGHWAY ADVISORY RADIO ANTENNA
- EXISTING CCTV CAMERA POLE
- EXISTING UTILITY SERVICE CONNECTION,
POLE MOUNTED
- EXISTING UTILITY SERVICE CONNECTION,
PAD MOUNTED
- EXISTING CONCEALED CONDUIT IN STRUCTURE
- EXISTING EXPOSED CONDUIT
- EXISTING RACEWAY OR DIRECT BURIED CABLE
WITHOUT ENCASEMENT
- EXISTING CONCEALED CONDUIT UNDERGROUND,
TRENCHED OR PUSHED
- EXISTING ELECTRIC CABLE IN CONDUIT

REVISIONS	
NAME	DATE

ILLINOIS DEPARTMENT OF TRANSPORTATION
F.A.I. 90/94 (DAN RYAN EXPRESSWAY)

ELECTRICAL SYMBOLS

SCALE: NOT TO SCALE DRAWN BY: CJM
DATE: FEB. 25, 2005 CHECKED BY: BMW

J:\75\contract\17b\details\el\05020337 3/7/24/2005 11:54:49 AM