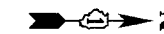
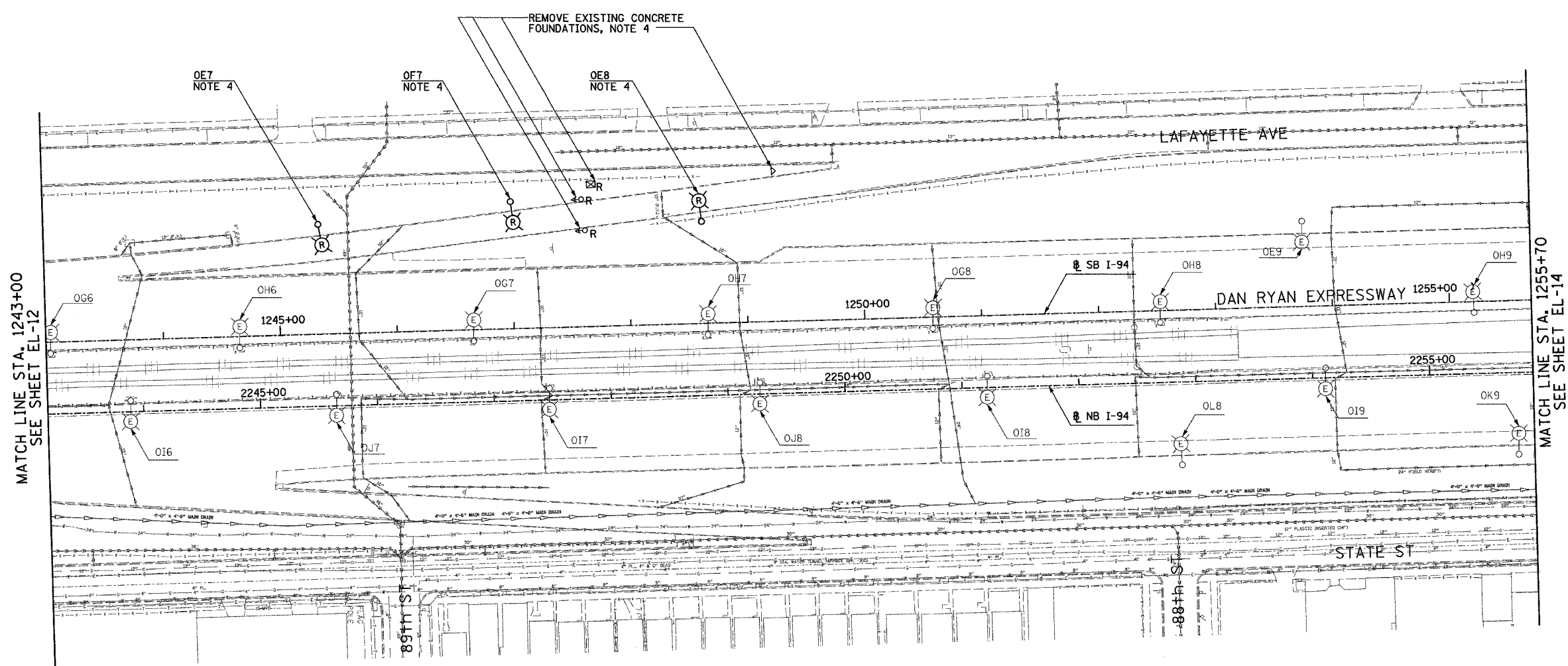


| F.A.I. RTE.               | SECTION | COUNTY                    | TOTAL SHEETS | SHEET NO. |
|---------------------------|---------|---------------------------|--------------|-----------|
| 94                        |         | COOK                      | 907          | 350       |
| STA. 1243+00.00           |         | TO STA. 1255+70.00        |              |           |
| FED. ROAD DIST. NO.       |         | ILLINOIS FED. AID PROJECT |              |           |
| (1516.1, 1717 & 1818) R-9 |         | 62695                     |              |           |

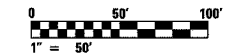


- NOTES:**
- SEE DRAWINGS EI-100 AND EI-101 FOR ELECTRICAL SYMBOLS AND ABBREVIATIONS.
  - COORDINATE ALL WORK WITH IDOT CONTRACTS 62583 AND 62694.
  - UNLESS NOTED OTHERWISE, ALL ITEMS AND WORK SHOWN IN HEAVY LINE WEIGHT ON THIS DRAWING ARE PROPOSED NEW ITEMS AND WORK.
  - ROADWAY LIGHT POLES AND SURVEILLANCE EQUIPMENT SHALL BE REMOVED UNDER CONTRACT 62583. FOUNDATION REMOVAL SHALL BE INCLUDED AS PART OF CONTRACT 62695 FOR THREE LIGHTING AND FOUR SURVEILLANCE FOUNDATIONS ON THIS SHEET.



MATCH LINE STA. 1243+00  
SEE SHEET EL-12

MATCH LINE STA. 1255+70  
SEE SHEET EL-14



17B/EL-13

**SINGH**  
SINGH & ASSOCIATES, INC.  
CONSULTING ENGINEERS

300 W. ADAMS ST.  
CHICAGO, IL 60606  
TEL: (312) 629-0240  
FAX: (312) 629-8449

| REVISIONS |      |
|-----------|------|
| NAME      | DATE |
|           |      |
|           |      |
|           |      |
|           |      |
|           |      |
|           |      |
|           |      |
|           |      |

ILLINOIS DEPARTMENT OF TRANSPORTATION  
F.A.I. 94 (DAN RYAN EXPRESSWAY)

ROADWAY LIGHTING AND SURVEILLANCE PLANS  
EXISTING CONDITIONS AND DEMOLITION

SCALE: 1"=50'  
DATE: MARCH 25, 2005

DRAWN BY: VG  
CHECKED BY: TM

J:\175\94\1021733D\_013-CIT.AST 5/16/2005 11:25:31 AM