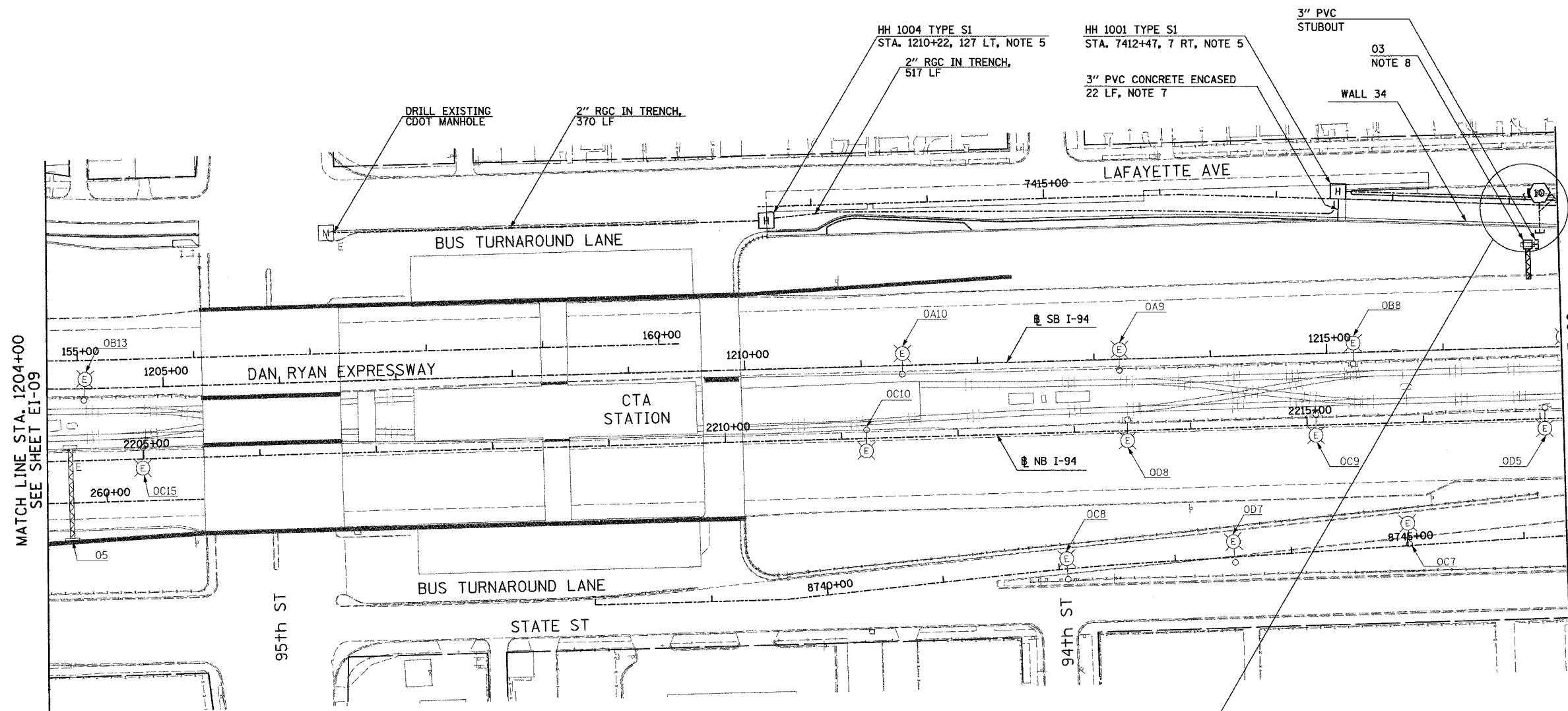


F.A.I. RTE.	SECTION	COUNTY	TOTAL SHEETS	SHEET NO.
94		COOK	907	369
STA. 1204+00.00		TO STA. 1217+00.00		
FED. ROAD DIST. NO.	ILLINOIS	FED. AID PROJECT		
• (1516,1,1717 & 1818) R-9			62695	

NOTES:

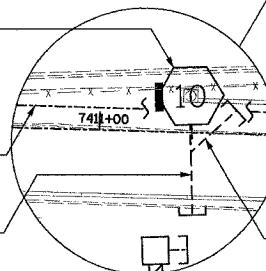
- SEE DRAWINGS EI-100 AND EI-101 FOR ELECTRICAL SYMBOLS AND ABBREVIATIONS.
- COORDINATE ALL WORK WITH IDOT CONTRACTS 62583 AND 62694.
- UNLESS NOTED OTHERWISE, ALL ITEMS AND WORK SHOWN IN HEAVY LINE WEIGHT ON THIS DRAWING ARE PROPOSED NEW ITEMS AND WORK.
- REFER TO STRUCTURAL DRAWINGS AND EI-104 FOR CONDUIT INSTALLATION DETAILS FOR LIGHT TOWER FOUNDATION MOUNTED ON WALL.
- REFER TO SHEETS EI-103, EI-106 AND EI-110 FOR HANDHOLE DETAILS.
- REFER TO SHEETS EI-102 AND ME-04 FOR DUCTBANK INSTALLATION DETAILS.
- REFER TO SHEETS EI-106 AND EI-110 FOR DETAILS.
- SIGN STRUCTURE SHALL BE PROVIDED UNDER THIS CONTRACT. SIGN LUMINAIRES, DISCONNECT SWITCH, WIRING AND CONNECTIONS SHALL BE PROVIDED BY OTHERS UNDER CONTRACT 62583.



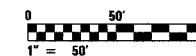
FOUNDATION FOR 6 OIJ3
NOTE 4

2" CNC IN TRENCH,
537 LF

(6)-4" CNC CONCRETE ENCASED,
REINFORCED 30 LF, NOTE 6



(2)-4" CNC CONCRETE ENCASED,
REINFORCED 10 LF, ITS



17B/EI-10

REVISIONS		
NAME	DATE	
REVISED	5/06/05	

ILLINOIS DEPARTMENT OF TRANSPORTATION
F.A.I. 94 (DAN RYAN EXPRESSWAY)

ELECTRICAL INFRASTRUCTURE PLANS
PROPOSED IMPROVEMENTS

SCALE: 1"=50'
DATE: MARCH 25, 2005

DRAWN BY: VG
CHECKED BY: TM

SINGH 300 W. ADAMS ST.
CHICAGO, IL 60606
SINGH & ASSOCIATES, INC. TEL: (312) 629-0240
CONSULTING ENGINEERS FAX: (312) 629-8449

12/21/01 PM
5/16/2005