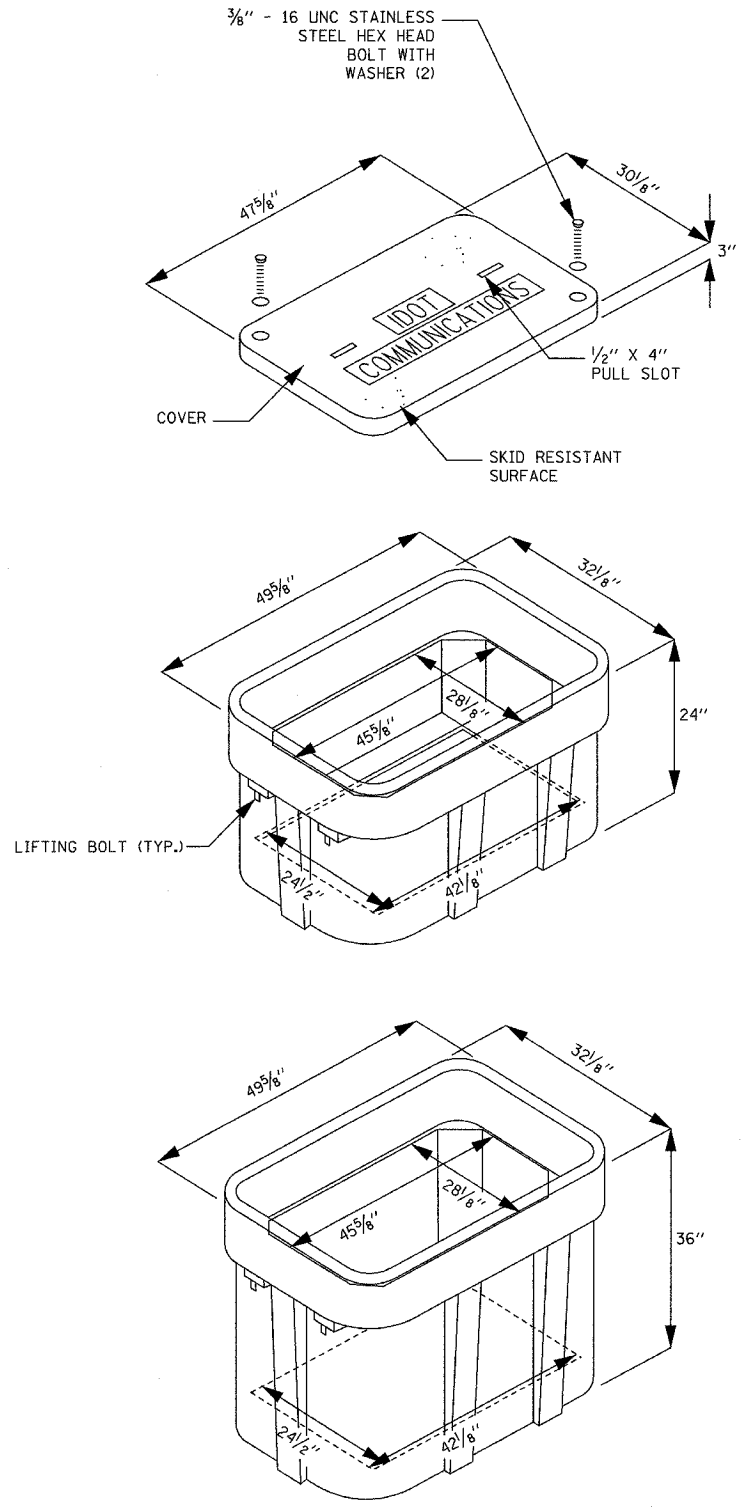
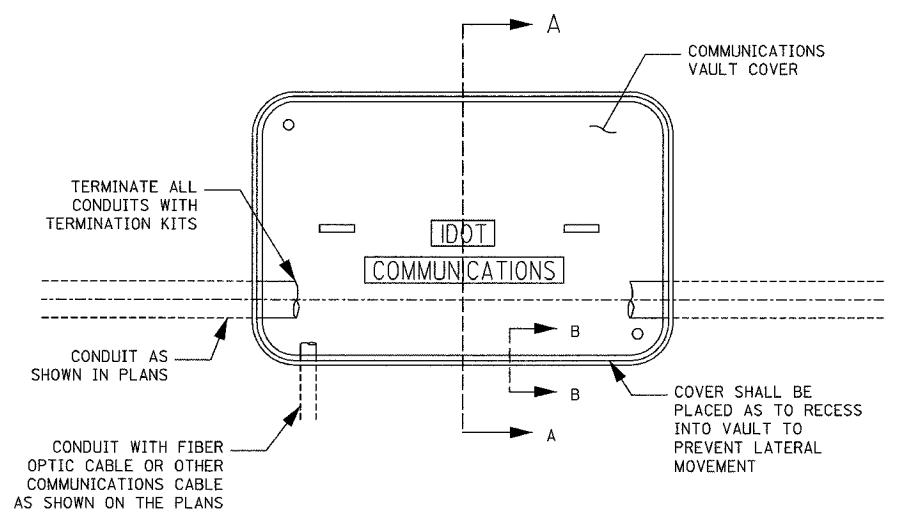
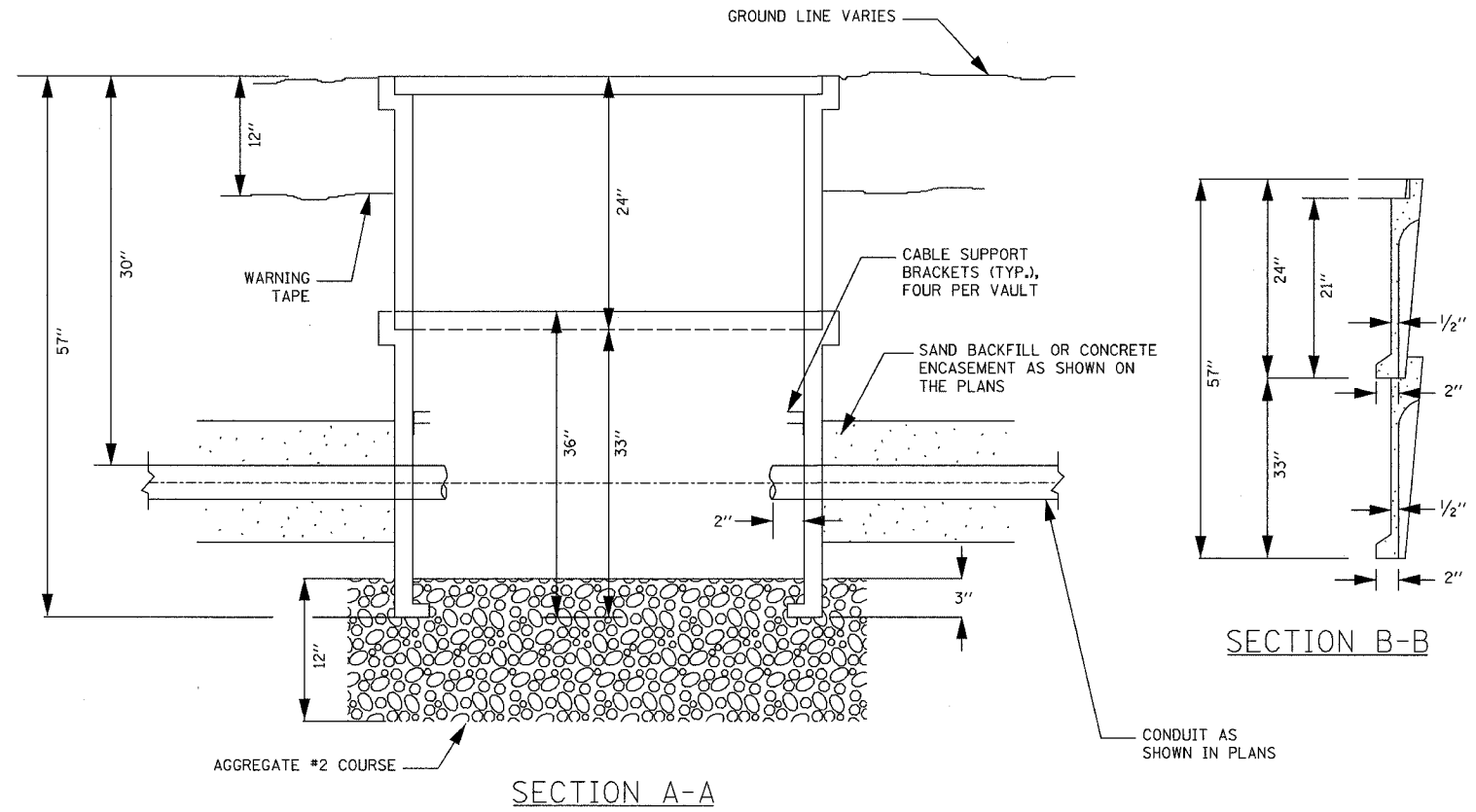


F.A.I. RTE.	SECTION	COUNTY	TOTAL SHEETS	SHEET NO.
94		COOK	907	416
STA. --- TO STA. ---				
FED. ROAD DIST. NO. 1 ILLINOIS FED. AID PROJECT				
• (1516, 1, 1717 & 1818) R-9				

62695



ISOMETRIC



PLAN

- NOTES:**
1. BOX SHALL HAVE AN OPEN BASE.
  2. COVER SHALL WITHSTAND AASHTO H 20 LOADING AND SHALL LOCK.
  3. ALL OPENINGS IN STRUCTURE MUST BE MACHINED AT TIME OF FABRICATION OR PUNCH DRIVEN AT TIME OF PLACEMENT.
  4. FIELD PLACEMENT OF COMMUNICATIONS VAULT SHALL BE AS DIRECTED BY THE ENGINEER.

17B/EI-107

REVISIONS	
NAME	DATE

ILLINOIS DEPARTMENT OF TRANSPORTATION  
 F.A.I. 90/94 (DAN RYAN EXPRESSWAY)

COMMUNICATIONS VAULT DETAILS  
 (HANDHOLE TYPE C1)

SCALE: NTS  
 DATE: FEB. 25, 2005

DRAWN BY: MJL  
 CHECKED BY: AAP

**Edwards AND Kelcey**  
 ONE NORTH FRANKLIN  
 CHICAGO, IL 60606  
 PHONE: (312) 251-3000  
 FAX: (312) 251-3015  
 WEB: WWW.EKCORP.COM

3/24/2005 11:06:3 AM