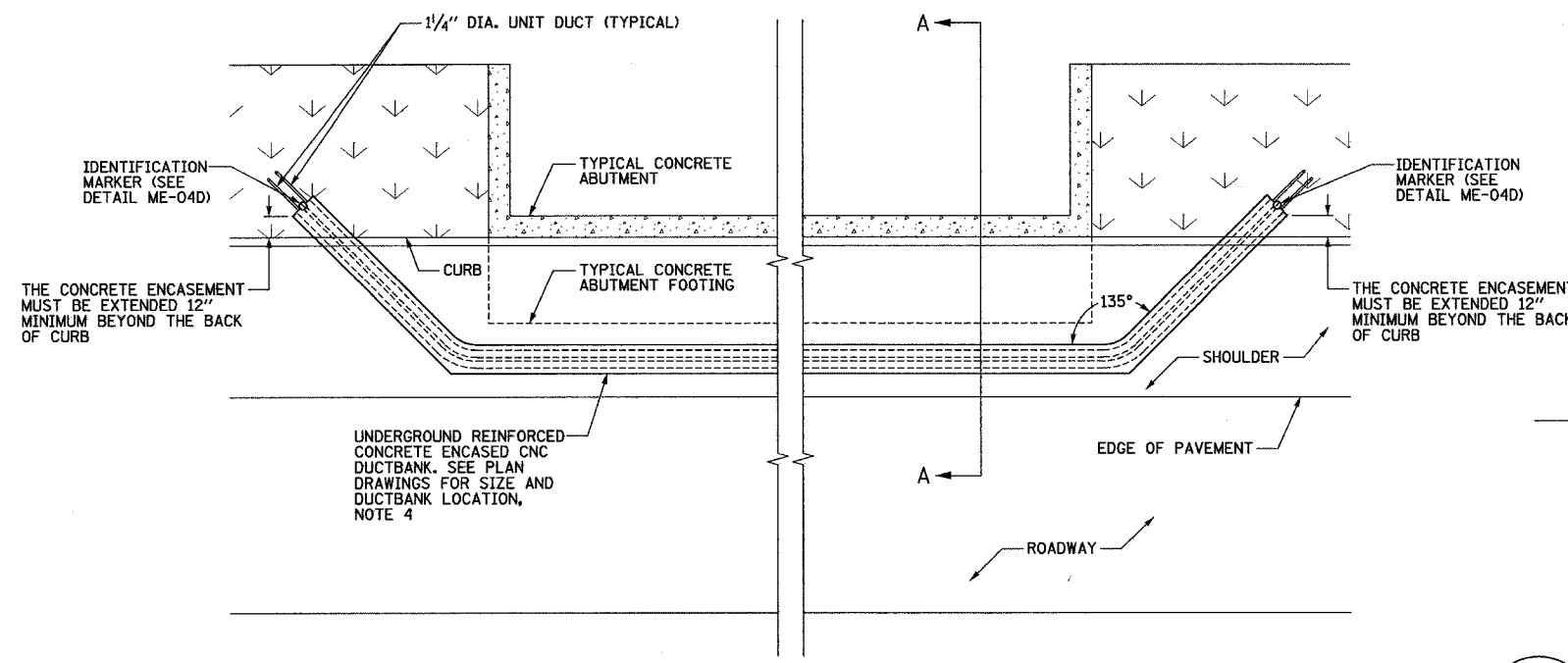
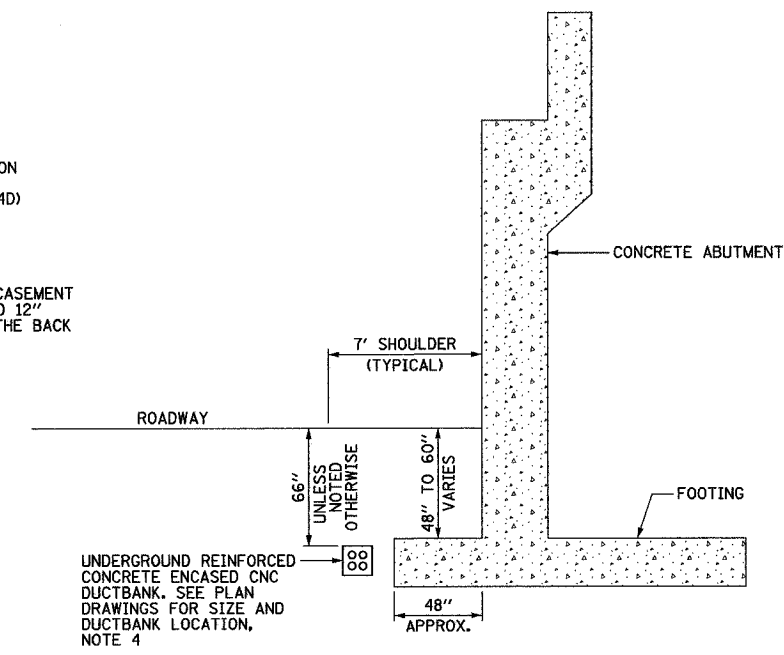


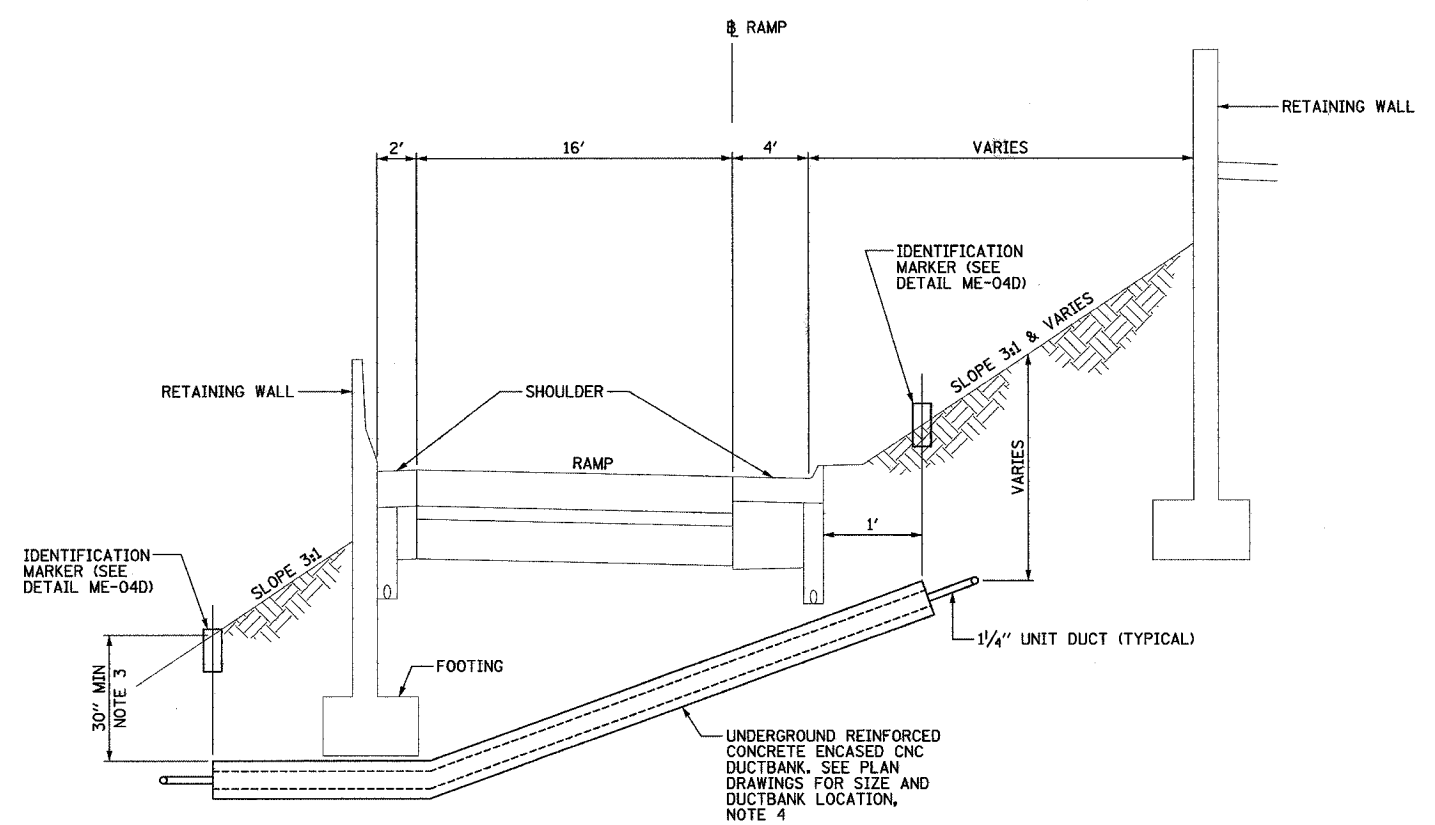
F.A.I. RTE.	SECTION	COUNTY	TOTAL SHEETS	SHEET NO.
94	*	COOK	907	423
STA.	TO STA.			
FED. ROAD DIST. NO. 1		ILLINOIS	FED. AID PROJECT	
(1516.1, 1717 & 1818)		R-9	62695	



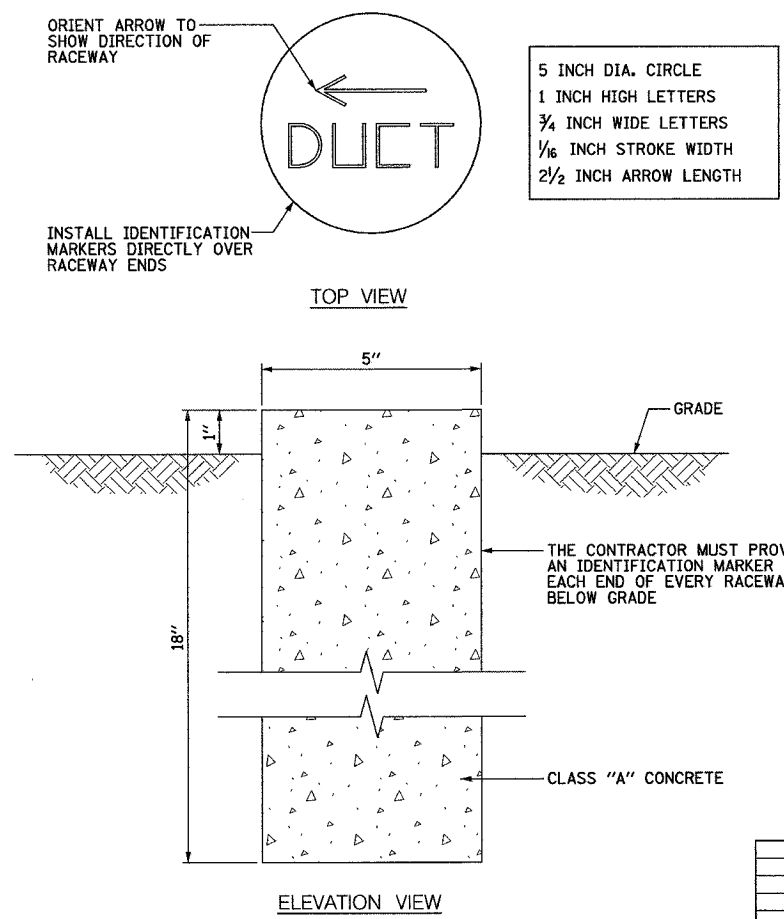
**ME-04A** DUCTBANK ROUTING AROUND ABUTMENT  
 SCALE: 1/4" = 1'-0"  
 DETAIL FOR REFERENCE ONLY, NOT INCLUDED IN THIS CONTRACT



**ME-04B** DUCTBANK INSTALLATION DETAIL A-A  
 SCALE: 1/4" = 1'-0"  
 DETAIL FOR REFERENCE ONLY, NOT INCLUDED IN THIS CONTRACT

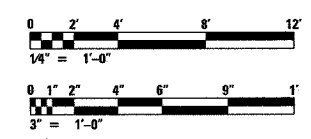


**ME-04C** TYPICAL CONCRETE ENCASED CNC UNDER RAMP INSTALLATION DETAIL  
 NOT TO SCALE



**ME-04D** IDENTIFICATION MARKER DETAIL  
 SCALE: 3" = 1'-0"

- NOTES:**
- SEE DRAWINGS ME-01 AND ME-02 FOR ELECTRICAL SYMBOLS AND ABBREVIATIONS.
  - SEE PLAN DRAWINGS FOR THE PROPOSED CONDUIT ROUTING.
  - DUCTBANK DEPTH MUST BE ADJUSTED SUCH THAT THE TOP OF CONCRETE ENCASEMENT IS INSTALLED UNDER THE RETAINING WALL FOOTING. THE DUCTBANK DEPTH MUST BE 30 INCHES MINIMUM.
  - SEE DRAWING ME-11 FOR ELECTRICAL CONCRETE DUCTBANK DETAILS.
  - SEE PLAN DRAWINGS FOR ANY DEVIATIONS IN DUCTBANK DEPTH.



REVISIONS		ILLINOIS DEPARTMENT OF TRANSPORTATION F.A.I. 90/94 (DAN RYAN EXPRESSWAY)
NAME	DATE	
		DUCTBANK INSTALLATION DETAILS UNDER RAMP AND AROUND ABUTMENTS
REVISED	5/6/05	SCALE: AS SHOWN DATE: FEB. 25, 2005
		DRAWN BY: CJM CHECKED BY: WDS

**CTE ENGINEERS**  
 CONSIDER TO WISEND ENVIRONMENTAL ENGINEERS, INC.  
 303 EAST WACKER DRIVE, SUITE 600  
 CHICAGO, ILLINOIS 60601-5212, PHONE: (312) 938-0300

J:\75\Contract\17B\_Details\ME04A-Detail.dwg 5/6/2005 12:17:56 PM