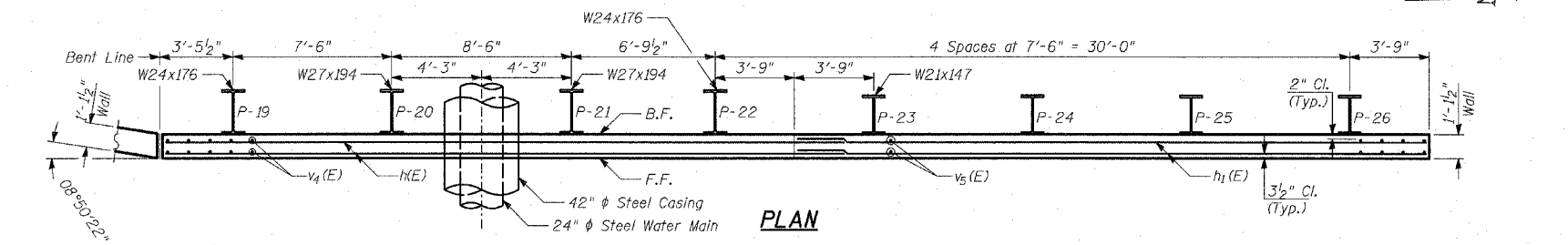


ELEVATION



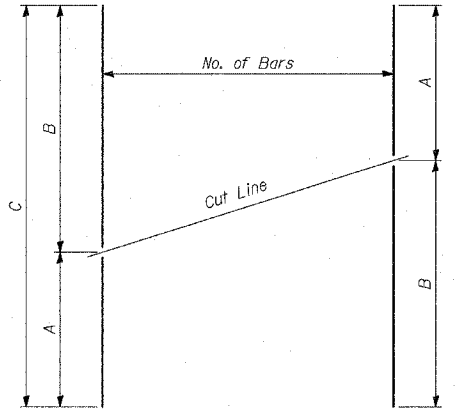
PLAN

BAR TABLE SCHEDULE

Bar	No. of Sets Req'd	No. of Bars Per Set	A	B	C
v(E)	1	31	3'-9"	5'-1"	8'-10"
v ₁ (E)	1	31	5'-1"	6'-6"	11'-7"
v ₂ (E)	1	31	6'-6"	7'-10"	14'-4"
v ₃ (E)	1	31	7'-10"	9'-2"	17'-0"
v ₄ (E)	1	31	9'-2"	6'-5"	15'-7"
v ₅ (E)	1	31	6'-5"	3'-7"	10'-0"

BILL OF MATERIAL

Bar	No.	Size	Length	Shape
d(E)	186	#4	5'-3"	L
d ₁ (E)	186	#6	6'-6"	—
e(E)	24	#5	32'-2"	—
e ₁ (E)	24	#5	29'-8"	—
h(E)	63	#5	32'-2"	—
h ₁ (E)	63	#5	29'-8"	—
v(E)	31	#4	8'-10"	—
v ₁ (E)	31	#4	11'-7"	—
v ₂ (E)	31	#4	14'-4"	—
v ₃ (E)	31	#4	17'-0"	—
v ₄ (E)	31	#4	15'-7"	—
v ₅ (E)	31	#4	10'-0"	—
Reinforcement Bars, Epoxy Coated			POUND	9,690
Concrete Structures			CU YD	76
Protective Coat			50 YD	247
Furnishing Soldier Piles (W Section)			FOOT	983
Drilling and Setting Soldier Piles (In Soil)			CU FT	5,237

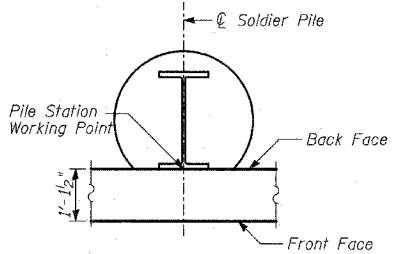


SERIES OF BAR CUTTING DIAGRAM
See table for dimensions. Make all cuts normal to bar axis

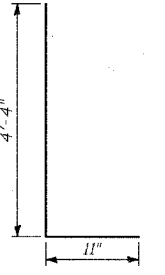
Reinforcement bars designated (E) shall be epoxy coated.

PILE LAYOUT

Pile	Station at Working Point	Top of Parapet El.	Top of Pile El.	Bot. of Wall El.	Section	Pile Tip El.	Pile Length
P-1	1203+30.76	18.65	14.48	11.60	W21x147	-20.43	34'-11"
P-2	1203+38.57	18.68	14.51	11.29		-20.74	35'-3"
P-3	1203+46.38	18.71	14.54	10.98		-21.04	35'-7"
P-4	1203+54.18	18.74	14.58	10.67		-21.34	35'-11"
P-5	1203+61.98	18.77	14.61	10.36		-21.64	36'-3"
P-6	1203+69.78	18.80	14.64	10.05		-22.03	36'-8"
P-7	1203+77.57	18.84	14.67	9.74		-22.33	37'-0"
P-8	1203+85.35	18.87	14.70	9.43		-22.63	37'-4"
P-9	1203+92.35	18.89	14.73	9.15		-22.86	37'-7"
P-10	1203+98.57	18.92	14.75	8.90		-23.16	37'-11"
P-11	1204+04.79	18.94	14.78	8.66		-23.39	38'-2"
P-12	1204+11.00	18.97	14.80	8.41		-23.62	38'-5"
P-13	1204+17.21	18.99	14.83	8.16		-23.92	38'-9"
P-14	1204+23.41	19.02	14.85	7.91		-24.15	39'-0"
P-15	1204+29.61	19.04	14.88	7.66		-24.37	39'-3"
P-16	1204+35.81	19.07	14.90	7.42		-24.60	39'-6"
P-17	1204+42.00	19.09	14.93	7.17		-24.91	39'-10"
P-18	1204+48.19	19.12	14.95	6.92	W21x147	-25.13	40'-1"
P-19	1204+54.72	19.10	14.93	7.09	W24x176	-24.98	39'-11"
P-20	1204+62.54	19.04	14.87	7.74	W27x194	-27.29	42'-2"
P-21	1204+71.09	18.97	14.80	8.48	W27x194	-26.53	41'-4"
P-22	1204+77.88	18.92	14.75	9.06	W24x176	-23.00	37'-9"
P-23	1204+85.38	18.85	14.69	9.71	W21x147	-22.31	37'-0"
P-24	1204+92.88	18.79	14.63	10.36		-21.71	36'-4"
P-25	1205+00.38	18.73	14.56	11.00		-21.02	35'-7"
P-26	1205+07.88	18.67	14.50	11.65	W21x147	-20.41	34'-11"



SOLDIER PILE WORKING POINT



BAR d(E)

LAP SPLICES

Bar	Lap
#4	1'-8"
#5	2'-2"
#6	2'-7"
#8	4'-6"

REVISIONS

NAME	DATE

ILLINOIS DEPARTMENT OF TRANSPORTATION
F.A.I. 94 (DAN RYAN EXPRESSWAY)
RETAINING WALL ALONG LAFAYETTE AVE.
AT 95TH ST. WALL 33 - PLAN & ELEV.
STA. 1204+51.11 TO STA. 1205+11.63,
PILE LAYOUT, DETAILS & BILL OF MATERIAL
 S.N. 016-W959 DESIGNED BY: MI, TB
 SCALE: N.T.S. DRAWN BY: DJR, TB
 DATE: MARCH 25, 2005 CHECKED BY: TD, MI

NOTES:
 1. B.F. - denotes Back Face.
 2. E.F. - denotes Each Face.
 3. F.F. - denotes Front Face.
 4. Work this Sheet with Sheets 4 thru 8 of 10.
 5. Pile spacing measured along front face of wall.