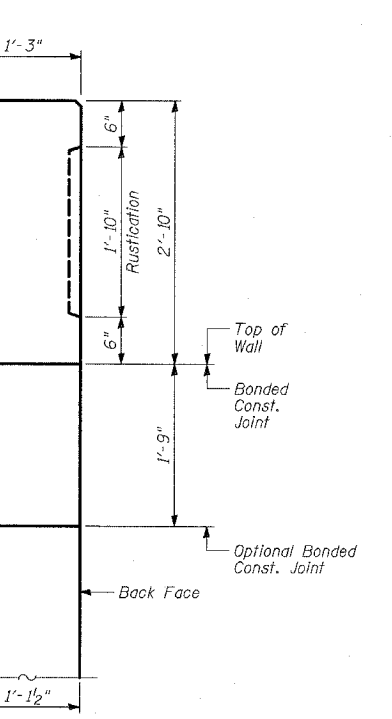
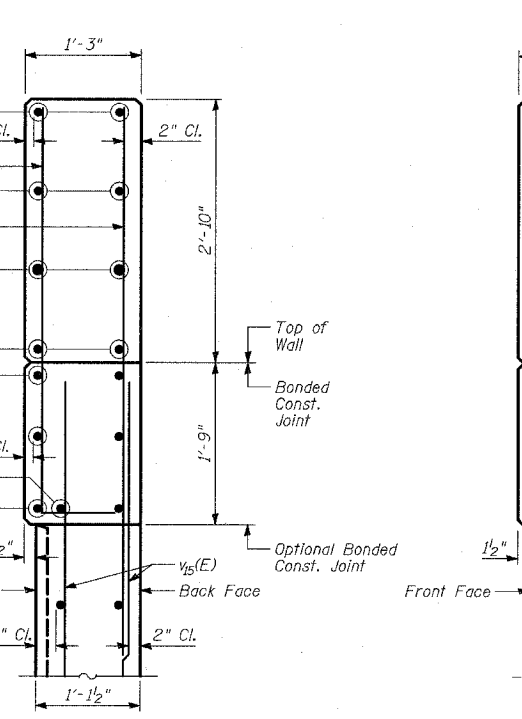
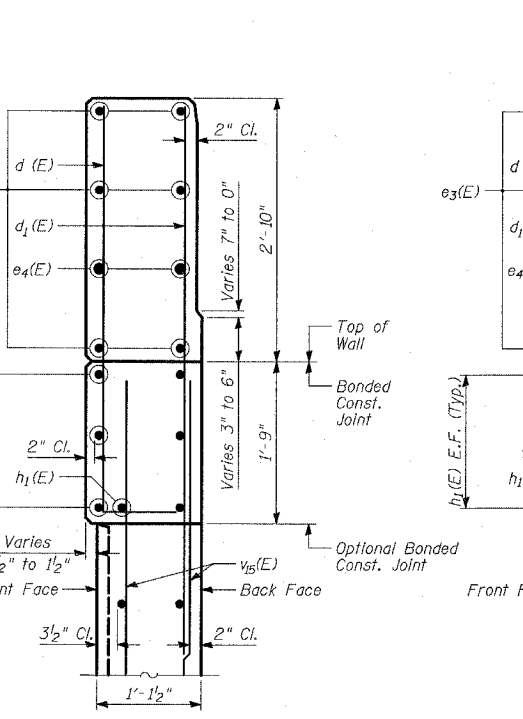
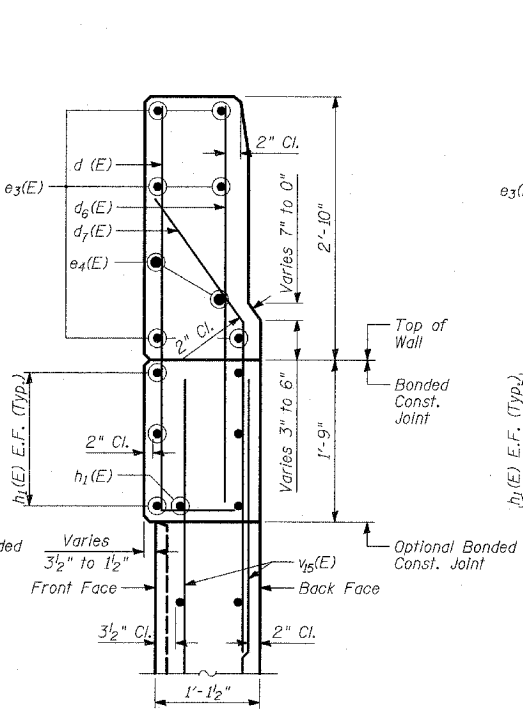
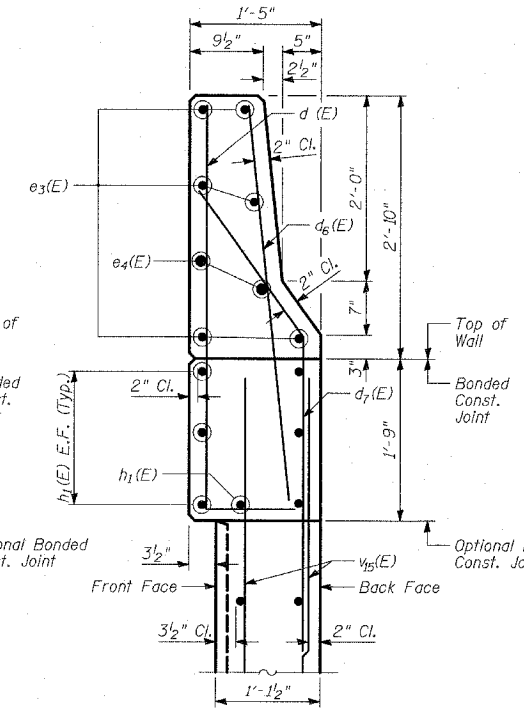
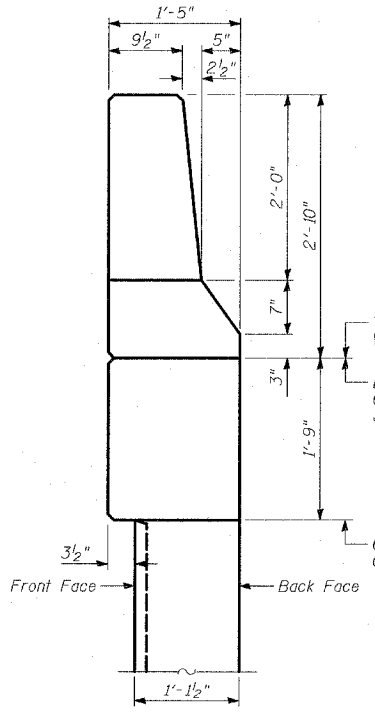


**BACK FACE ELEVATION - TRANSITION - MODIFIED TYPE F BARRIER TO FLUTED PARAPET - CONCRETE DIMENSIONS**  
(From Sta. 1214+74.75 to Sta. 1215+04.75)

**BACK FACE ELEVATION - TRANSITION - MODIFIED TYPE F BARRIER TO FLUTED PARAPET - REINFORCEMENT**  
(From Sta. 1214+74.75 to Sta. 1215+04.75)



SECTION A-A

SECTION B-B

SECTION C-C

SECTION D-D

SECTION E-E

SECTION F-F

- NOTES:**
1. B.F. - denotes Back Face.
  2. E.F. - denotes Each Face.
  3. F.F. - denotes Front Face.
  4. Work this sheet with Sheet 5 of 20.
  5. For Lap Splices, see Sheet 10 of 20.

TYLIN INTERNATIONAL

REVISIONS	
NAME	DATE

ILLINOIS DEPARTMENT OF TRANSPORTATION  
 F.A.I. 94 (DAN RYAN EXPRESSWAY)  
 RETAINING WALL ALONG LAFAYETTE AVE.  
 EXIT RAMP TO 95TH ST.  
 WALL 34  
 PARAPET TRANSITION  
 S.N. 016-W946 DESIGNED BY: MI, MAF  
 SCALE: N.T.S. DRAWN BY: MAF, DJR  
 DATE: MARCH 25, 2005 CHECKED BY: TD, MI