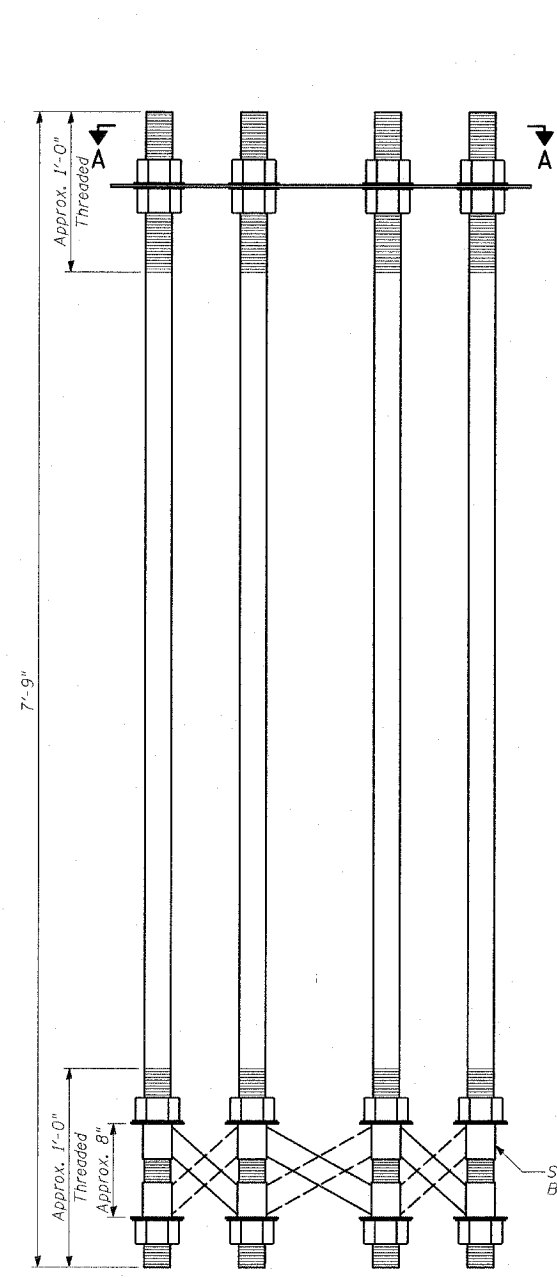
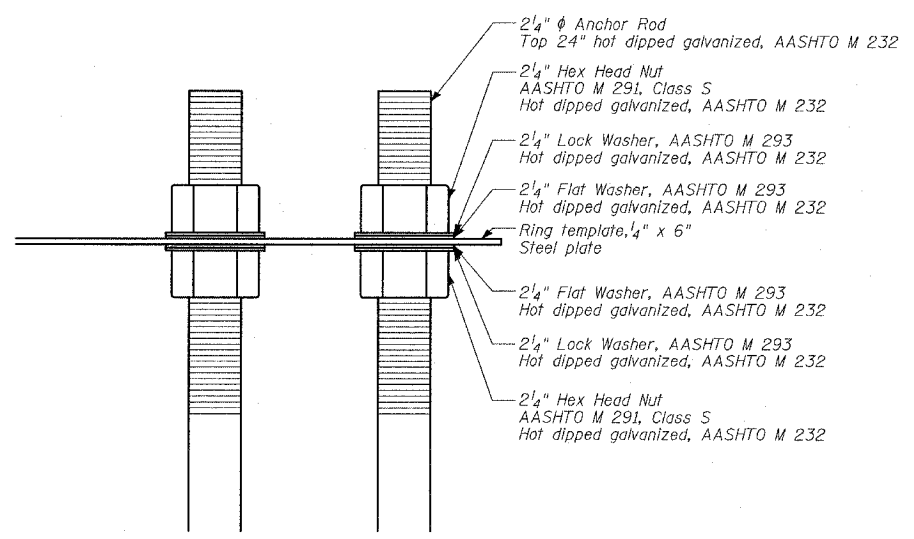


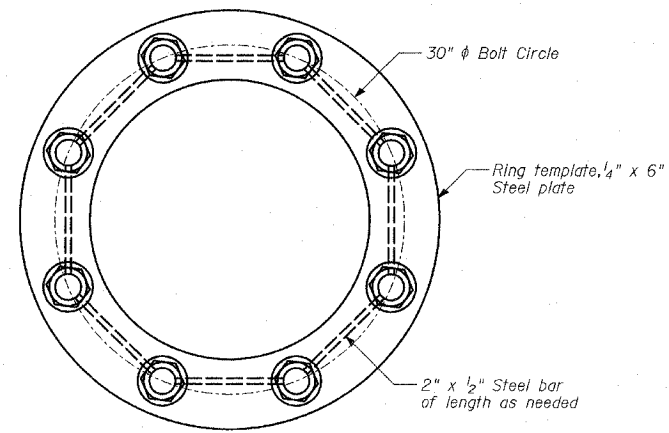
F.A.I. RTE.	SECTION	COUNTY	TOTAL SHEETS	SHEET NO.
94		COOK	907	465
STA. 1200+00.00		TO STA. 1365+00		
FED. ROAD DIST. NO.		ILLINOIS FED. AID PROJECT		
(1516.1, 1717 & 1818) R-9		62695		



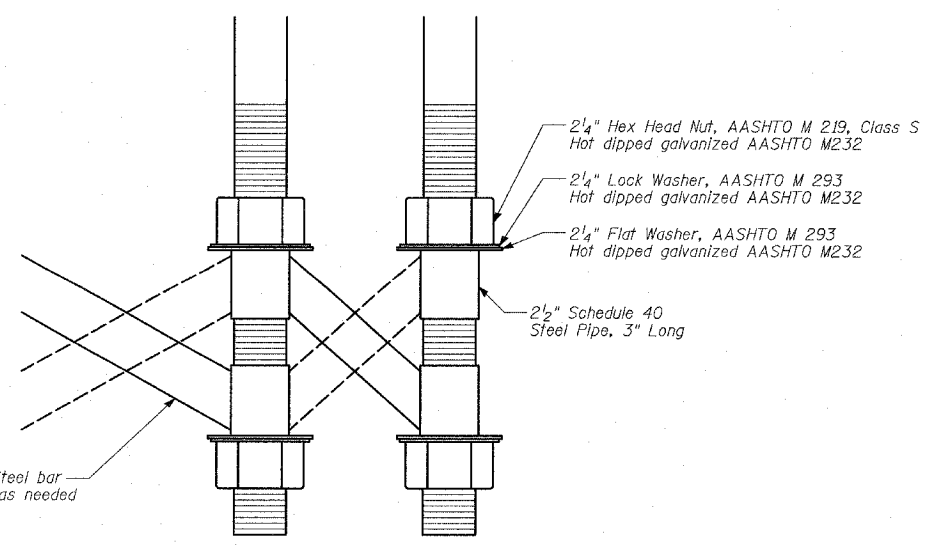
**ANCHOR BOLT CAGE**



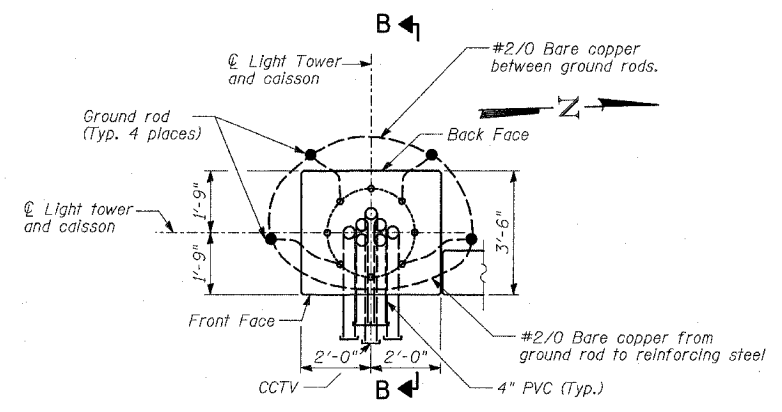
**BOLT CAGE TOP**



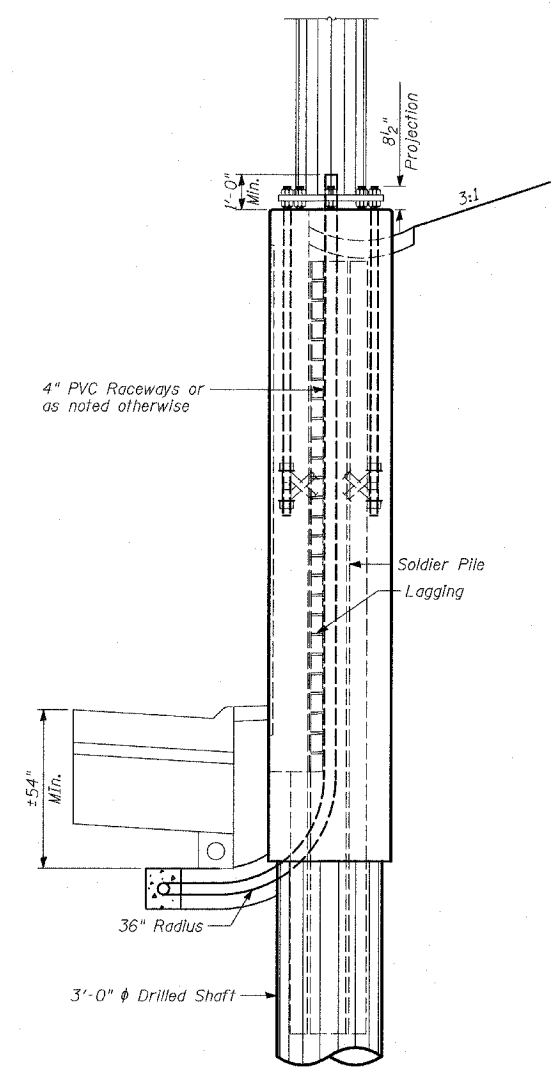
**SECTION A-A**



**BOLT CAGE BOTTOM**



**PLAN - CONDUIT PLACEMENT**



**SECTION B-B**

- NOTES:**
- Anchor rods shall be straight and shall be according to AASHTO M 314 or ASTM F1554, Grade 105 and galvanized according to article 1006.09.
  - Anchor rod information shall be submitted for approval and shall be fully coordinated with tower manufacturer's requirements.
  - The Anchor Rods shall be vertical. No adjustment shall be allowed after the foundation is placed.
  - The gap between the foundation and the base plate shall be enclosed with a stainless steel screen fastened with a stainless steel band. Cost included with "Light Tower" in Contract 62583.
  - The Light Tower shall not be erected until after the concrete has been cured according to Article 1020.13.
  - Two anchor rods opposite each other shall have the anchor rod threads peened after nuts are installed.
  - Refer to BE501 for details.

**TYLIN INTERNATIONAL**

REVISIONS	
NAME	DATE

ILLINOIS DEPARTMENT OF TRANSPORTATION  
**F.A.I. 94 (DAN RYAN EXPRESSWAY)**  
**RETAINING WALL ALONG LAFAYETTE AVE.**  
**EXIT RAMP AT 93RD ST.**  
**WALL 35**  
**LIGHT TOWER DETAILS**  
 S.N. 016-W947      DESIGNED BY: TD, DJR  
 SCALE: N.T.S.      DRAWN BY: DJR  
 DATE: MARCH 25, 2005      CHECKED BY: MI, TD