

Wang Engineering, INC.
 Consulting Geotechnical and Environmental Engineers
 wangeng3@wangeng.com
 1145 Main Street
 Lombard, IL 60148
 Telephone: 630 953-9928
 Fax: 630 953-9938

BORING LOG SB 35-03 Page 1 of 2

WEI Job No.: 414-07-01
 Client: T. Y. LIN International
 Project: Dan Ryan Improvements; IDOT No. D-91-421-01
 Location: From 95th Street to South of 69th Street

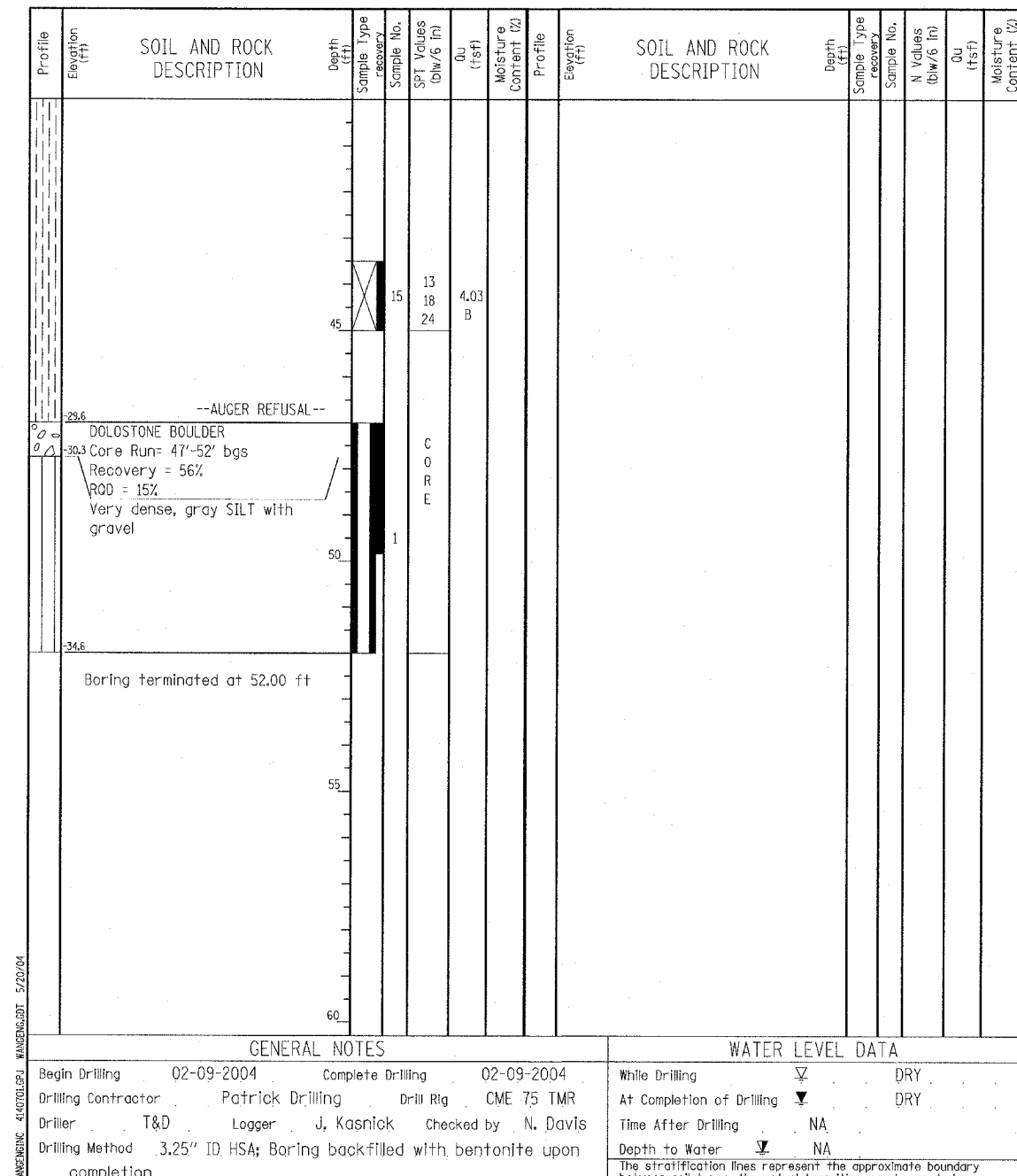
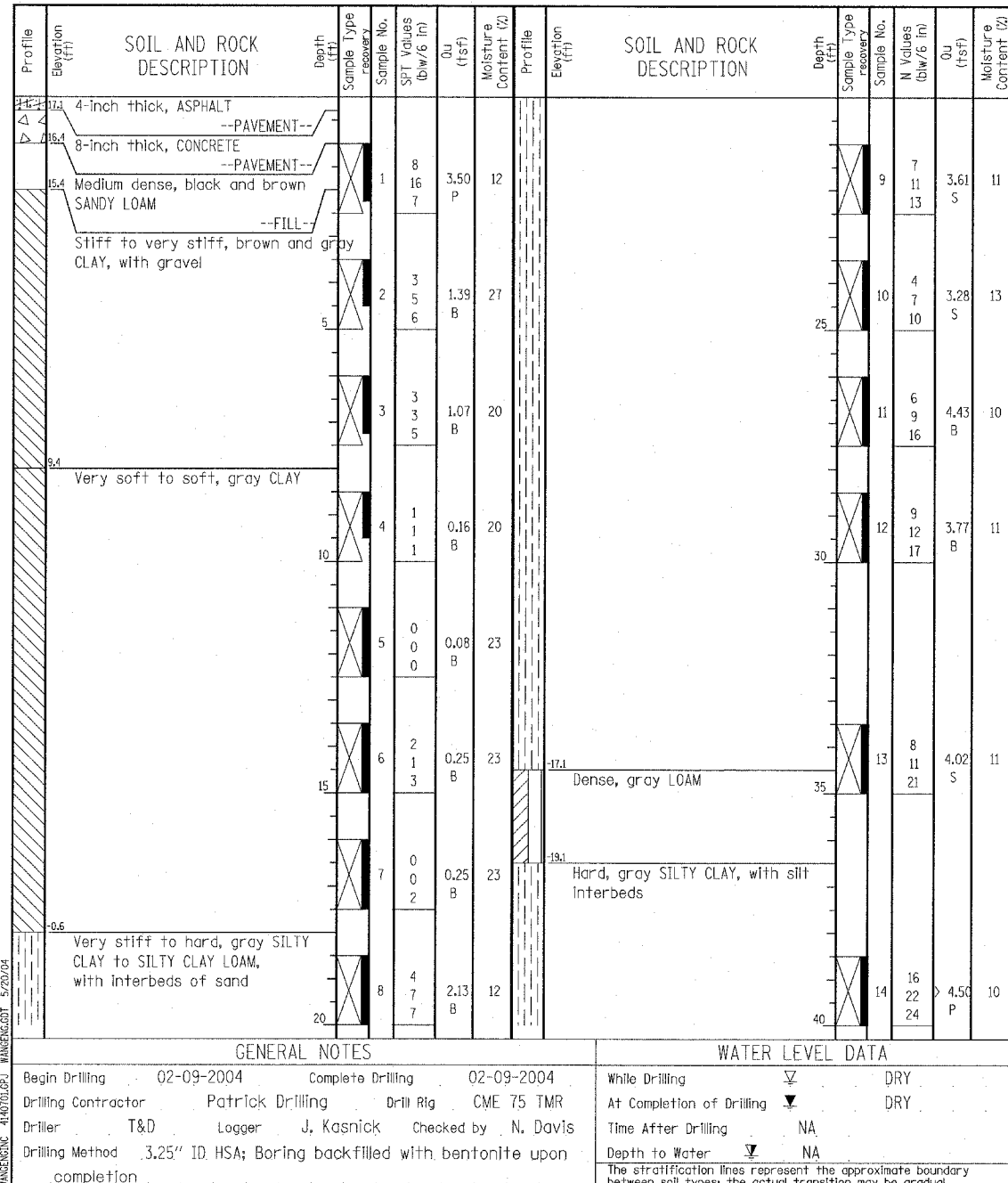
Datum: CCD
 Elevation: 17.41 ft
 North: 1843244.00 ft
 East: 1177580.76 ft
 Station: 1218+64.6
 Offset: 143.487' LT

Wang Engineering, INC.
 Consulting Geotechnical and Environmental Engineers
 wangeng3@wangeng.com
 1145 Main Street
 Lombard, IL 60148
 Telephone: 630 953-9928
 Fax: 630 953-9938

BORING LOG SB 35-03 Page 2 of 2

WEI Job No.: 414-07-01
 Client: T. Y. LIN International
 Project: Dan Ryan Improvements; IDOT No. D-91-421-01
 Location: From 95th Street to South of 69th Street

Datum: CCD
 Elevation: 17.41 ft
 North: 1843244.00 ft
 East: 1177580.76 ft
 Station: 1218+64.6
 Offset: 143.487' LT



TYLIN INTERNATIONAL

REVISIONS	
NAME	DATE

ILLINOIS DEPARTMENT OF TRANSPORTATION
F.A.I. 94 (DAN RYAN EXPRESSWAY)
RETAINING WALL ALONG LAFAYETTE AVE.
EXIT RAMP AT 93RD ST.
WALL 35
BORING LOG SB35-03
 S.N. 016-W947 DESIGNED BY: DJR
 SCALE: N.T.S. DRAWN BY: DJR
 DATE: MARCH 25, 2005 CHECKED BY: TD

P:\02\27\3\Structure\CITRWall_35\SB35\BORING\0230-W947.dwg
 03/29/2005 03:31:44 PM