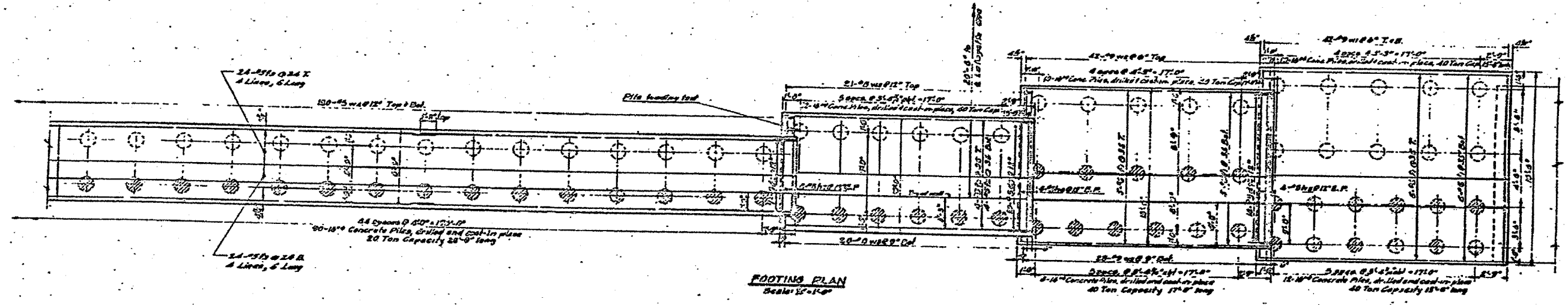


ELEVATION-SOUTH RETAINING WALL
 PANELS 31 & 32
 Scale: 1/2" = 1'-0"



FOOTINGS PLAN
 Scale: 1/2" = 1'-0"

Notes:
 For General Plan of wall see sheet No 24.
 For Sections see sheet No 26.

REVISIONS	
DATE	DESCRIPTION

DEPARTMENT OF HIGHWAYS
 COOK COUNTY, ILLINOIS

RETAINING WALL DETAILS
OF STREET GRADE SEPARATION
OVER
SOUTH ROUTE EXPRESSWAY

DESIGNED BY: DANIEL RYAN
 DRAWN BY: WILLIAM J. HOFFMEYER
 CHECKED BY: G.S.M.
 PROJECT: 01-03-11971
 SCALE: 1/2" = 1'-0"
 APPROVED: [Signature]
 DATE: 03-25-05

Do not work from this sheet.
 The information shown is for
 reference purposes only.
 No Pay Items are shown.

REVISIONS	
NAME	DATE

ILLINOIS DEPARTMENT OF TRANSPORTATION
 F.A.I. 94 (DAN RYAN EXPRESSWAY)
 RETAINING WALL ALONG LAFAYETTE AVE.
 93RD ST. TO 91ST ST.
 WALL 36
 EXISTING RETAINING WALL (3 OF 3)
 S.N. 016-W948
 SCALE: N.T.S.
 DATE: MARCH 25, 2005

DESIGNED BY: DJR
 DRAWN BY: DJR
 CHECKED BY:

03/29/2005 03:33:45 PM