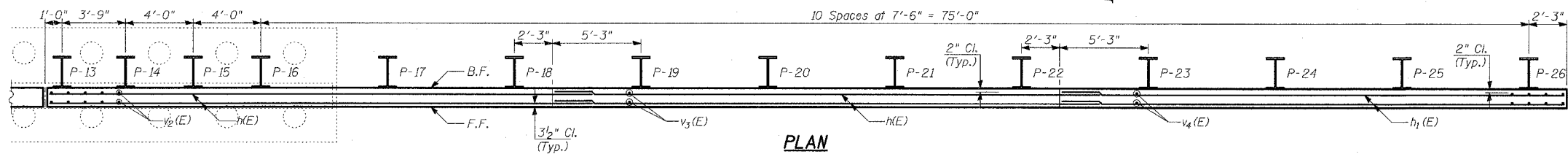


ELEVATION



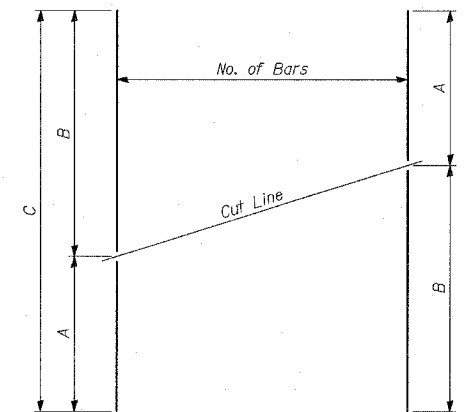
PLAN

PILE LAYOUT

Pile	Station at Working Point	Top of Parapet El.	Top of Pile El.	Bot. of Wall El.	Section	Pile Tip El.	Pile Length
P-1	1233+66.27	21.50	17.34	8.18	W18x106	-16.83	34'-2"
P-2	1233+70.27	21.33	17.16	8.15		-16.92	34'-1"
P-3	1233+74.27	21.15	16.98	8.12		-16.93	33'-11"
P-4	1233+78.27	20.98	16.81	8.09		-16.94	33'-9"
P-5	1233+82.27	20.80	16.63	8.06		-16.95	33'-7"
P-6	1233+86.27	20.62	16.46	8.03	W18x106	-17.04	33'-6"
P-7	1233+90.27	20.45	16.28	8.01	W24x176	-26.05	42'-4"
P-8	1233+98.27	20.10	15.93	7.95	W24x176	-26.07	42'-0"
P-9	1234+06.27	19.75	15.58	7.89	W24x176	-26.17	41'-9"
P-10	1234+14.27	19.39	15.23	7.83	W24x176	-26.19	41'-5"
P-11	1234+18.27	19.22	15.05	7.80	W18x106	-17.20	32'-3"
P-12	1234+22.52	19.03	14.86	7.77		-17.30	32'-2"
P-13	1234+26.52	18.84	14.68	7.74		-16.32	31'-0"
P-14	1234+30.27	18.63	14.46	7.72		-16.29	30'-9"
P-15	1234+34.27	18.40	14.23	7.69		-16.35	30'-7"
P-16	1234+38.27	18.17	14.01	7.66		-16.41	30'-5"
P-17	1234+45.77	17.75	13.58	7.61		-16.42	30'-0"
P-18	1234+53.27	17.32	13.15	7.55		-16.52	29'-8"
P-19	1234+60.77	16.89	12.72	7.50		-16.53	29'-3"
P-20	1234+68.27	16.46	12.30	7.44		-16.62	28'-11"
P-21	1234+75.77	16.04	11.87	7.39		-16.63	28'-6"
P-22	1234+83.27	15.61	11.44	7.34		-16.73	28'-2"
P-23	1234+90.77	15.18	11.01	7.28		-16.74	27'-9"
P-24	1234+98.27	14.75	10.59	7.23		-16.83	27'-5"
P-25	1235+05.77	14.33	10.16	7.17		-16.84	27'-0"
P-26	1235+13.27	13.90	9.73	7.12	W18x106	-16.93	26'-8"

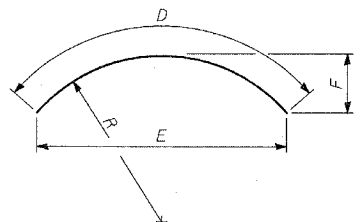
BAR TABLE SCHEDULE

Bar	No. of Sets Req'd	No. of Bars Per Set	A	B	C
v(E)	1	31	10'-3"	9'-1"	19'-4"
v1(E)	1	31	9'-1"	8'-0"	17'-1"
v2(E)	1	31	8'-0"	6'-6"	14'-6"
v3(E)	1	31	6'-6"	5'-0"	11'-6"
v4(E)	1	31	5'-0"	3'-6"	8'-6"



SERIES OF BAR CUTTING DIAGRAM

See table for dimensions. Make all cuts normal to bar axis



Bar	D	E	F	R
e2(E)	8'-0"	7'-4 1/2"	1'-4"	5'-9"
e3(E)	9'-1"	8'-4 3/8"	1'-6 1/4"	6'-6"
h2(E)	8'-0"	7'-4 1/2"	1'-4"	5'-9"
h3(E)	9'-1"	8'-4 3/8"	1'-6 1/4"	6'-6"

BARS e2(E), e3(E), h2(E) & h3(E)

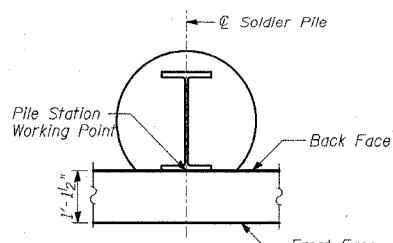
LAP SPLICES

Bar	Lap
#4	1'-8"
#5	2'-2"
#6	2'-7"
#8	4'-6"

BILL OF MATERIAL

Bar	No.	Size	Length	Shape
d(E)	227	#4	5'-3"	L
d1(E)	155	#6	6'-6"	—
d2(E)	73	#6	5'-11"	—
e(E)	32	#5	32'-2"	—
e1(E)	24	#5	29'-8"	—
e2(E)	4	#5	8'-0"	—
e3(E)	4	#5	9'-1"	—
h(E)	76	#5	32'-2"	—
h1(E)	49	#5	29'-8"	—
h2(E)	4	#5	8'-0"	—
h3(E)	3	#5	9'-1"	—
v(E)	31	#4	19'-4"	—
v1(E)	31	#4	17'-1"	—
v2(E)	31	#4	14'-6"	—
v3(E)	31	#4	11'-6"	—
v4(E)	31	#4	8'-6"	—
Reinforcement Bars, Epoxy Coated		POUND	10,450	
Concrete Structures		CU YD	83	
Furnishing Soldier Piles (W Section)		FOOT	841	
Drilling and Setting Soldier Piles (in Rock)		CU FT	103	
Drilling and Setting Soldier Piles (in Soil)		CU FT	4,024	
Protective Coat		SQ YD	283	

Reinforcement bars designated (E) shall be epoxy coated.



SOLDIER PILE WORKING POINT

NOTES:

1. B.F. - denotes Back Face.
2. E.F. - denotes Each Face.
3. F.F. - denotes Front Face.
4. Work this Sheet with Sheets 5 thru 7 of 10.
5. Pile spacing measured along front face of wall.
6. Place new piles to miss existing piles.
7. Existing wall footing and pile layout is shown only for conflicting areas between existing and proposed piles.