

PILE LAYOUT

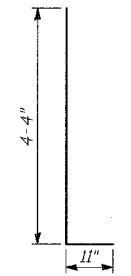
Pile	Station at Working Point	Top of Parapet El.	Top of Pile El.	Bot. of Wall El.	Section	Pile Tip El.	Pile Length
P-1	1270+18.20	12.52	8.36	5.61	W18x143	-21.39	29'-9"
P-2	1270+25.69	12.41	8.25	5.01		-22.00	30'-3"
P-3	1270+33.19	12.31	8.14	4.41		-22.61	30'-9"
P-4	1270+40.68	12.20	8.03	3.82		-23.22	31'-3"
P-5	1270+48.17	12.09	7.92	3.22		-23.83	31'-9"
P-6	1270+55.66	11.98	7.81	2.62		-24.44	32'-3"
P-7	1270+63.16	11.87	7.70	2.02		-25.05	32'-9"
P-8	1270+70.65	11.76	7.59	1.42		-25.66	33'-3"
P-9	1270+78.14	11.69	7.52	1.11		-26.98	34'-6"
P-10	1270+85.64	11.67	7.50	1.09		-27.00	34'-6"
P-11	1270+93.13	11.65	7.48	1.06		-27.02	34'-6"
P-12	1271+00.62	11.62	7.46	1.04		-27.04	34'-6"
P-13	1271+08.11	11.60	7.43	1.02		-27.07	34'-6"
P-14	1271+15.61	11.58	7.41	0.99		-27.09	34'-6"
P-15	1271+23.10	11.55	7.39	0.97		-27.11	34'-6"
P-16	1271+30.59	11.53	7.36	0.95		-27.14	34'-6"
P-17	1271+38.04	11.51	7.34	0.92		-27.16	34'-6"
P-18	1271+45.54	11.48	7.32	0.90		-27.18	34'-6"
P-19	1271+53.04	11.46	7.30	0.88		-27.20	34'-6"
P-20	1271+60.54	11.44	7.27	0.86		-27.23	34'-6"
P-21	1271+68.04	11.42	7.25	0.83		-27.25	34'-6"
P-22	1271+75.54	11.39	7.23	0.81		-27.27	34'-6"
P-23	1271+83.04	11.37	7.20	0.79		-27.30	34'-6"
P-24	1271+90.54	11.35	7.18	0.76		-27.32	34'-6"
P-25	1271+98.04	11.32	7.16	0.74		-27.34	34'-6"
P-26	1272+05.54	11.30	7.13	0.72		-27.37	34'-6"
P-27	1272+13.04	11.28	7.11	0.70		-27.39	34'-6"
P-28	1272+20.54	11.26	7.09	0.67		-27.41	34'-6"
P-29	1272+27.29	11.23	7.07	0.65		-27.43	34'-6"
P-30	1272+33.29	11.22	7.05	0.63		-27.45	34'-6"
P-31	1272+40.79	11.19	7.03	0.61		-27.47	34'-6"
P-32	1272+48.79	11.17	7.00	0.59		-27.50	34'-6"
P-33	1272+56.79	11.14	6.98	0.56		-27.52	34'-6"
P-34	1272+64.79	11.12	6.95	0.54		-27.55	34'-6"
P-35	1272+72.79	11.10	6.93	0.51		-27.57	34'-6"
P-36	1272+80.79	11.07	6.90	0.49		-27.60	34'-6"
P-37	1272+88.29	11.05	6.88	0.47		-27.62	34'-6"
P-38	1272+95.79	11.03	6.86	0.44		-27.64	34'-6"
P-39	1273+03.29	11.00	6.84	0.42		-27.66	34'-6"
P-40	1273+10.79	10.98	6.81	0.40		-27.69	34'-6"
P-41	1273+18.04	10.96	6.79	0.62		-26.46	33'-3"
P-42	1273+25.54	10.93	6.77	1.09		-25.98	32'-9"
P-43	1273+33.04	10.91	6.74	1.55		-25.51	32'-3"
P-44	1273+40.54	10.89	6.72	2.02		-25.03	31'-9"
P-45	1273+48.04	10.87	6.70	2.49		-24.55	31'-3"
P-46	1273+55.54	10.84	6.68	2.95		-24.07	30'-9"
P-47	1273+63.04	10.82	6.65	3.42		-23.60	30'-3"
P-48	1273+70.54	10.80	6.63	3.89	W18x143	-23.12	29'-9"

BILL OF MATERIAL

Bar	No.	Size	Length	Shape
d(E)	372	#4	5'-3"	L
d ₁ (E)	372	#6	6'-6"	—
e(E)	56	#5	32'-2"	—
e ₁ (E)	40	#5	29'-8"	—
h(E)	143	#5	32'-2"	—
h ₁ (E)	101	#5	29'-8"	—
v(E)	62	#4	9'-1"	—
v ₁ (E)	62	#4	13'-0"	—
v ₂ (E)	496	#4	7'-5"	—
Reinforcement Bars, Epoxy Coated POUND 19,350				
Protective Coat SQ YD 481				
Concrete Structures CU YD 157				
Furnishing Soldier Piles (W Section) FOOT 1,608				
Drilling and Setting Soldier Piles (in Soil) CU FT 8,340				

Reinforcement bars designated (E) shall be epoxy coated.

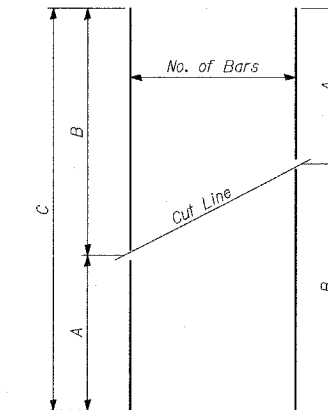
F.A.I. RTE. 94	SECTION *	COUNTY COOK	TOTAL SHEETS 907	SHEET NO. 558
STA. 1200+00.00 TO STA. 1365+00		ILLINOIS FED. AID PROJECT		
FED. ROAD DIST. NO. (1516.1, 1717 & 1818) R-9		62695		



BAR d(E)

BAR TABLE SCHEDULE

Bar	No. of Sets Req'd	No. of Bars Per Set	A	B	C
v(E)	2	31	3'-7"	5'-6"	9'-1"
v ₁ (E)	2	31	5'-6"	7'-6"	13'-0"

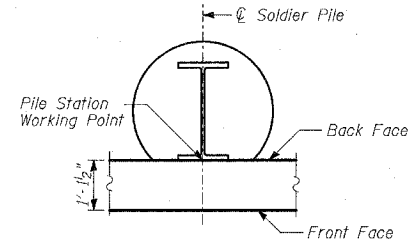


SERIES OF BAR CUTTING DIAGRAM

See table for dimensions. Make all cuts normal to bar axis.

LAP SPLICES

Bar	Lap
#4	1'-8"
#5	2'-2"
#6	2'-7"
#8	4'-6"



SOLDIER PILE WORKING POINT

TYLIN INTERNATIONAL

REVISIONS	
NAME	DATE

ILLINOIS DEPARTMENT OF TRANSPORTATION
 F.A.I. 94 (DAN RYAN EXPRESSWAY)
 RETAINING WALL ALONG LAFAYETTE AVE.
 EXIT RAMP AT AIS #3
 AIS 3 - PILE LAYOUT,
 DETAILS & BILL OF MATERIAL
 S.N. 016-W958 DESIGNED BY: MI, DJR
 SCALE: N.T.S. DRAWN BY: DJR, TB
 DATE: MARCH 25, 2005 CHECKED BY: TD, MI

03/29/2005 03:56:24 PM