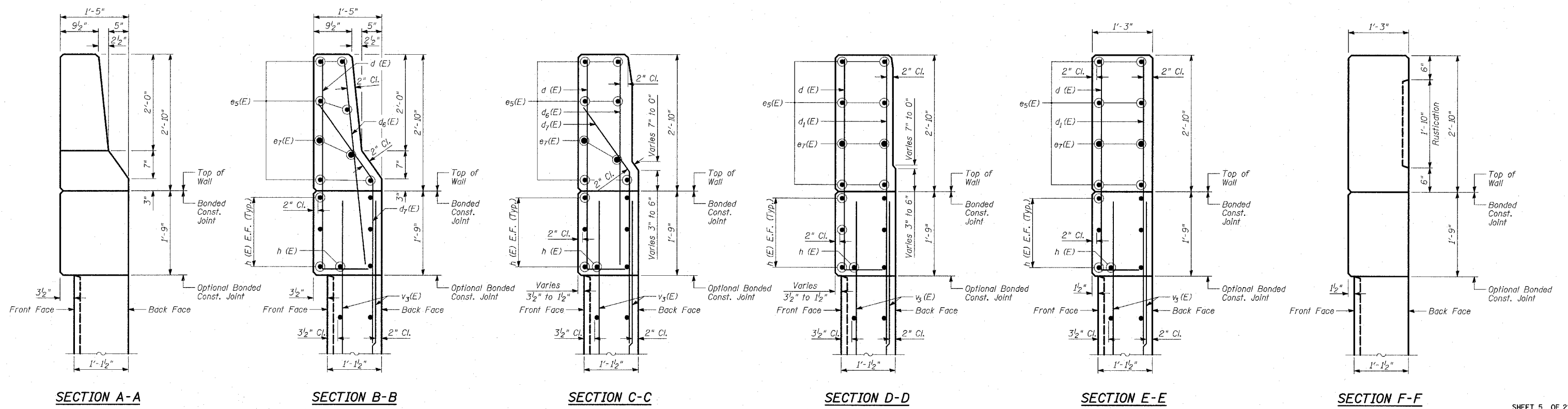


BACK FACE ELEVATION - TRANSITION - MODIFIED TYPE F BARRIER TO FLUTED PARAPET - CONCRETE DIMENSIONS
(From Sta. 1315+42.88 to Sta. 1315+73.12)

BACK FACE ELEVATION - TRANSITION - MODIFIED TYPE F BARRIER TO FLUTED PARAPET - REINFORCEMENT
(From Sta. 1315+42.88 to Sta. 1315+73.12)



SECTION A-A

SECTION B-B

SECTION C-C

SECTION D-D

SECTION E-E

SECTION F-F

- NOTES:**
1. B.F. - denotes Back Face.
 2. E.F. - denotes Each Face.
 3. F.F. - denotes Front Face.
 4. Work this sheet with Sheets 2 and 6 of 21.
 5. For Lap Splices, see Sheet 6 of 21.

TYLIN INTERNATIONAL

| REVISIONS | |
|-----------|------|
| NAME | DATE |
| | |
| | |
| | |
| | |
| | |
| | |
| | |
| | |
| | |

ILLINOIS DEPARTMENT OF TRANSPORTATION
F.A.I. 94 (DAN RYAN EXPRESSWAY)
SOUTHBOUND EXIT RAMP RETAINING WALL
AT 79TH ST.
WALL 72
PARAPET TRANSITION

S.N. 016-W971
SCALE: N.T.S.
DATE: MARCH 25, 2005

DESIGNED BY: MI, MAF
DRAWN BY: MAF, DJR
CHECKED BY: TD, MI