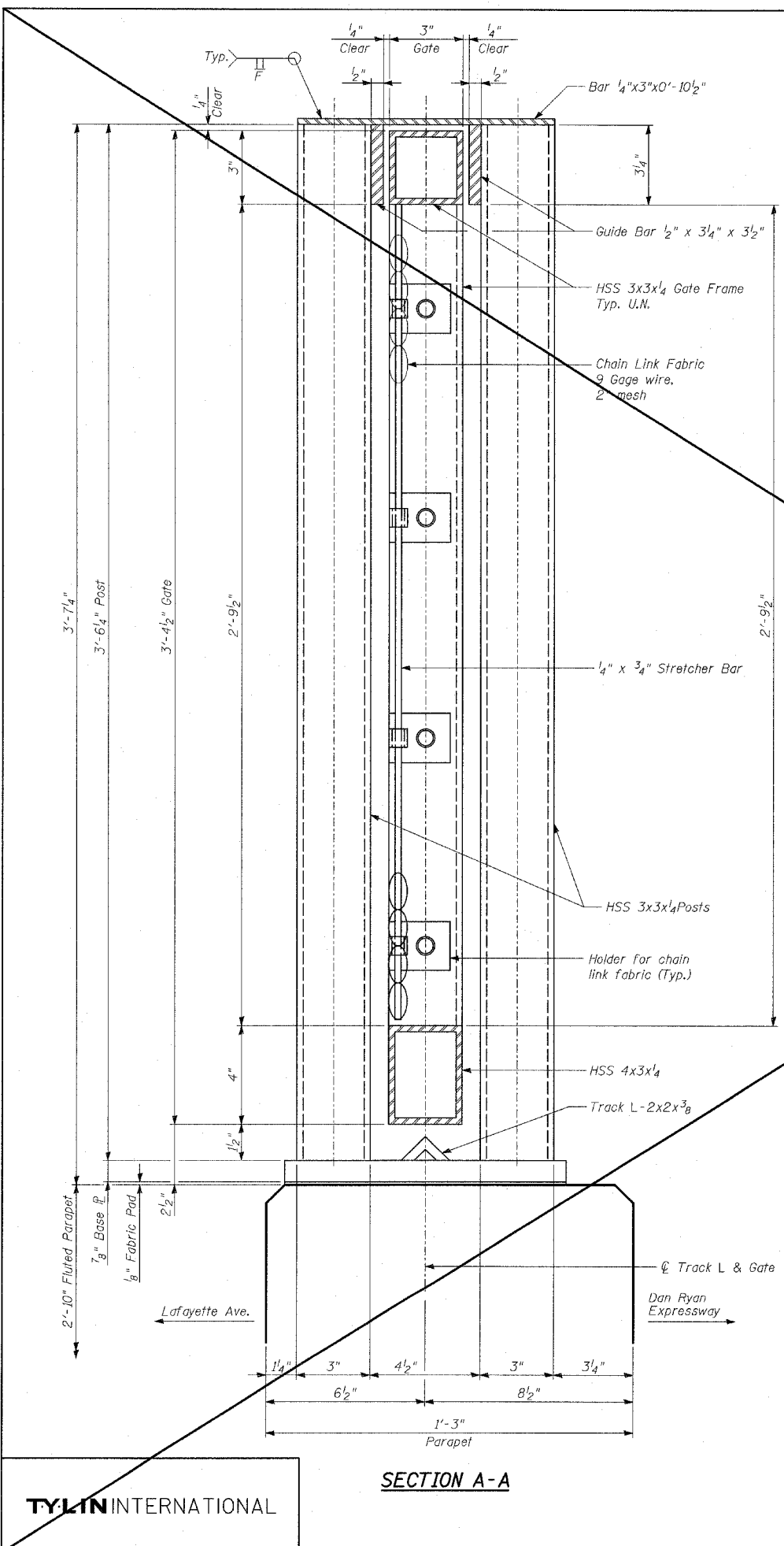
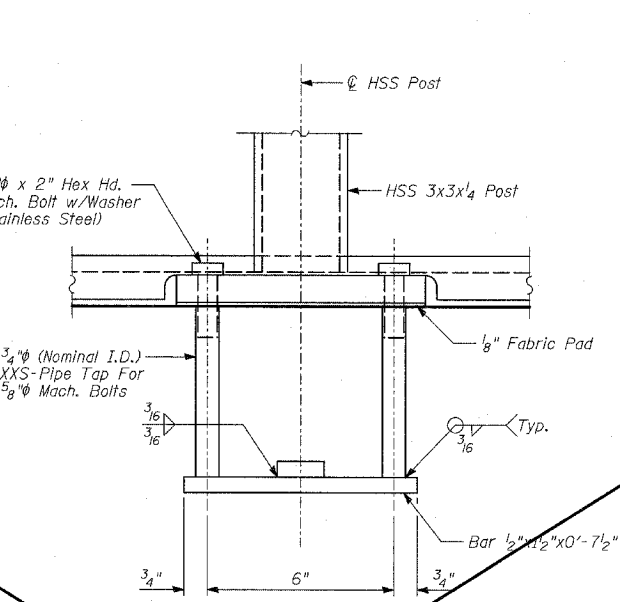


F.A.I. RTE.	SECTION	COUNTY	TOTAL SHEETS	SHEET NO.
94		COOK	907	581
STA. 1200+00.00		TO STA. 1365+00		
FED. ROAD DIST. NO.		ILLINOIS FED. AID PROJECT		
		* (1516.1, 1717 & 1818) R-8		
				62695



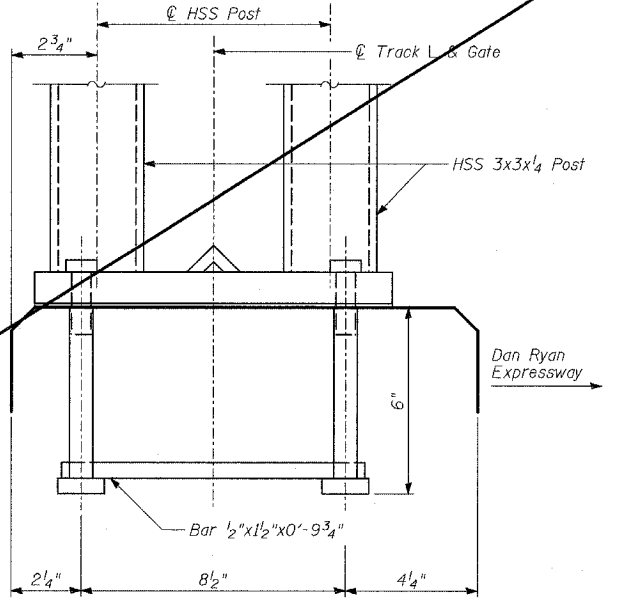
TYLIN INTERNATIONAL

SECTION A-A

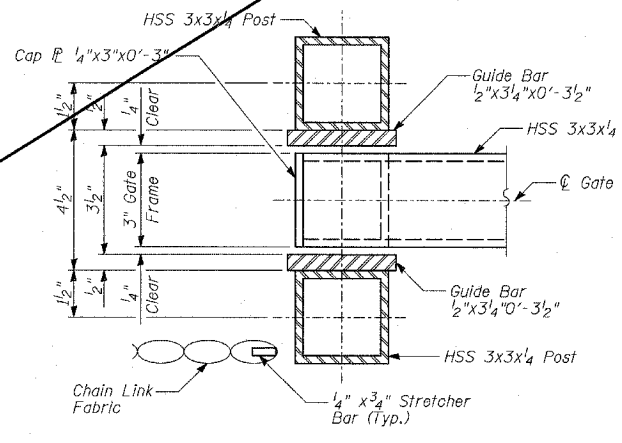


ANCHOR BOLT DETAILS

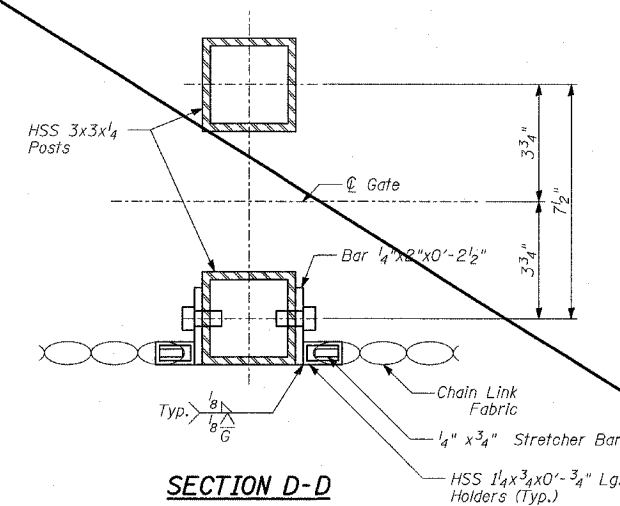
In lieu of the cast-in-place anchor bolt assembly shown, the Contractor has the option of drilling and epoxy grouting 5/8" diameter anchor rods with 1/4" diameter washers. The Contractor shall use the capsule or the adhesive cartridge type anchor rods that have been previously tested and given prior approval by the Department. The Contractor shall install these anchor rods in pre-drilled holes according to the manufacturer's recommendations and procedures. The capsule or adhesive cartridge shall be sealed with pre-measured amounts of adhesive chemical. Anchor rod threading to be peened after nuts are installed.



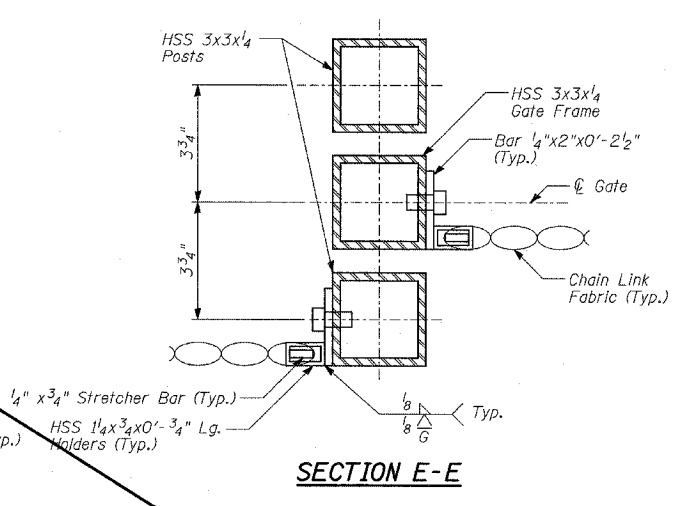
Dan Ryan Expressway



SECTION B-B



SECTION D-D



SECTION E-E

- NOTES:**
- For Notes See Sheet 15 of 21.
 - For Anchor Bolt locations, see Details 1, 2 & 3 on Sheet 15 of 21.

REVISIONS	
NAME	DATE
REVISION	04/15/05

ILLINOIS DEPARTMENT OF TRANSPORTATION
**F.A.I. 94 (DAN RYAN EXPRESSWAY)
 SOUTHBOUND EXIT RAMP RETAINING WALL
 AT 79TH ST.
 WALL 72
 GATE SECTIONS**

S.N. 016-W971 DESIGNED BY: MI, MAF
 SCALE: N.T.S. DRAWN BY: MAF, BUR
 DATE: MARCH 25, 2005 CHECKED BY: TD, MI