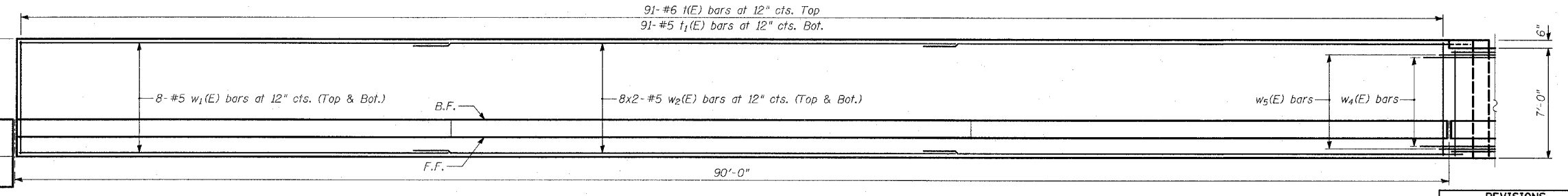
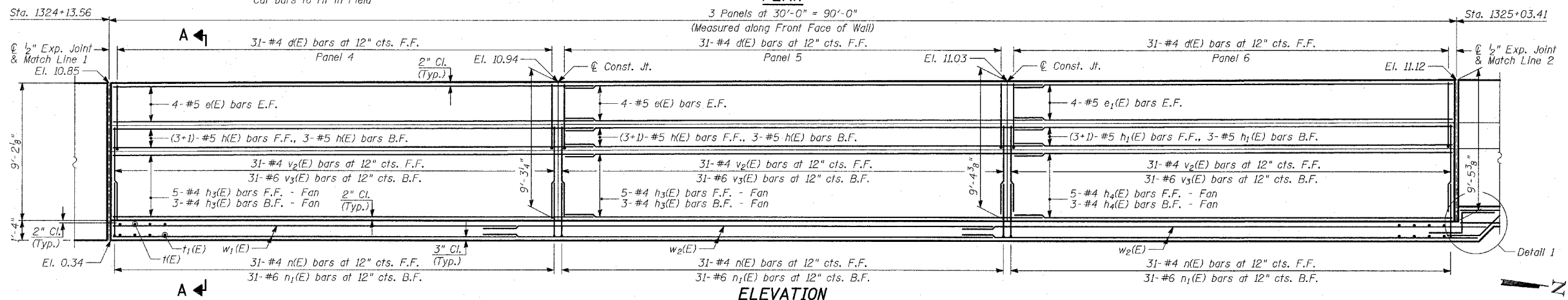
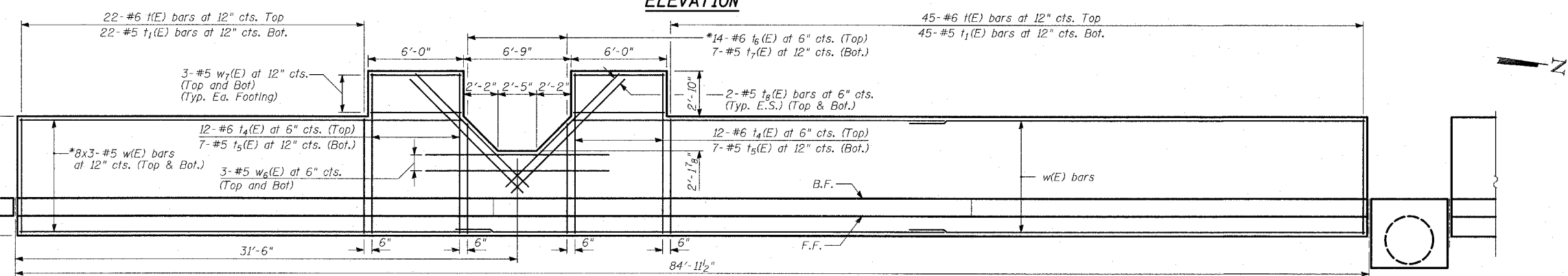
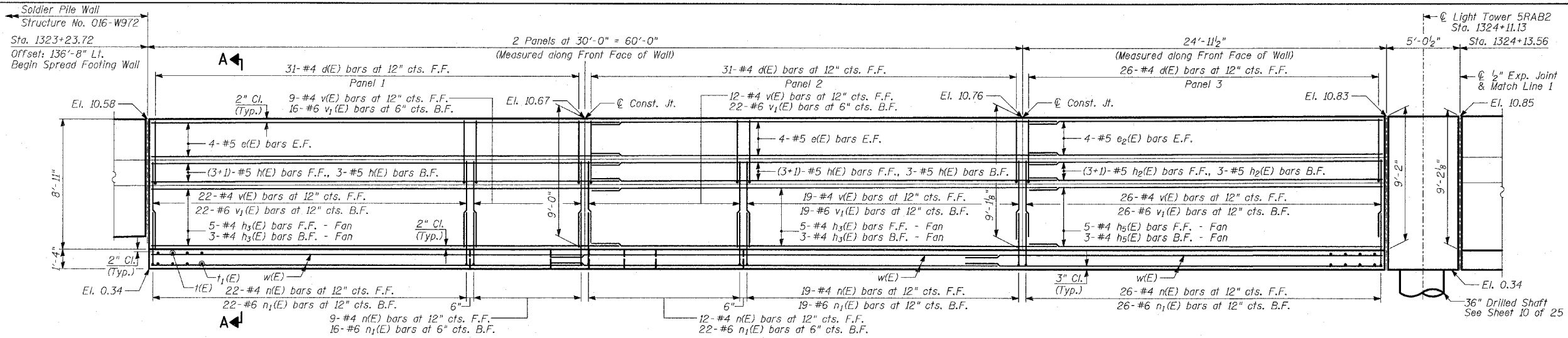


F.A.I. RTE.	SECTION	COUNTY	TOTAL SHEETS	SHEET NO.
94		COOK	907	612
STA. 1200+00.00 TO STA. 1365+00		ILLINOIS FED. AID PROJECT		
FED. ROAD DIST. NO.		(1516.1, 1717 & 1818) R-9		



- NOTES:**
1. B.F. - denotes Back Face.
  2. E.F. - denotes Each Face.
  3. F.F. - denotes Front Face.
  4. Work this Sheet with Sheets 9, 10, 12, 13 and 15 thru 20 of 25.
  5. Pile spacing measured along front face of wall.
  6. For Lap Splices, see Sheet 9 of 25.

REVISIONS	
NAME	DATE

ILLINOIS DEPARTMENT OF TRANSPORTATION  
 F.A.I. 94 (DAN RYAN EXPRESSWAY)  
 RETAINING WALL ALONG LAFAYETTE AVE.  
 77TH PL. TO 78TH ST.  
 WALL 73B - PLAN AND ELEVATION  
 STA. 1323+23.72 TO STA. 1325+03.41  
 S.N. 016-W973  
 SCALE: N.T.S.  
 DATE: MARCH 25, 2005

DESIGNED BY: MI  
 DRAWN BY: SNB  
 CHECKED BY: TD, MI

TYLIN INTERNATIONAL