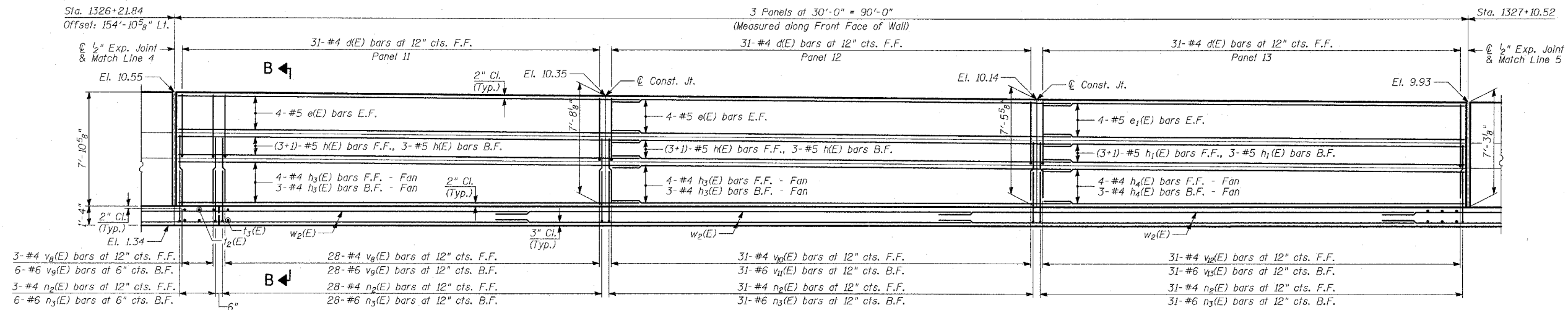
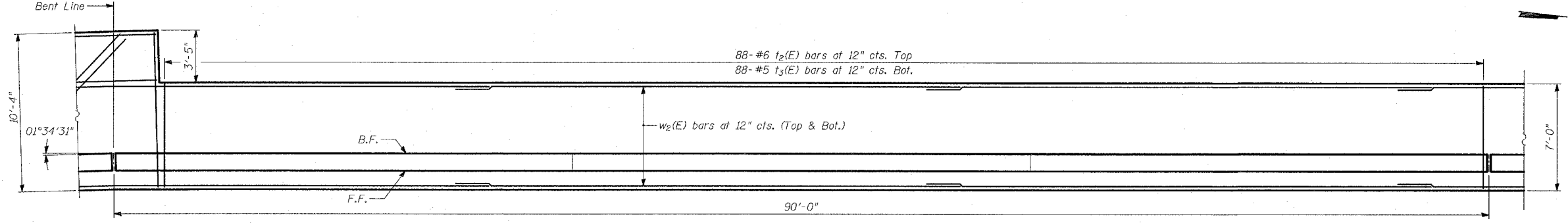


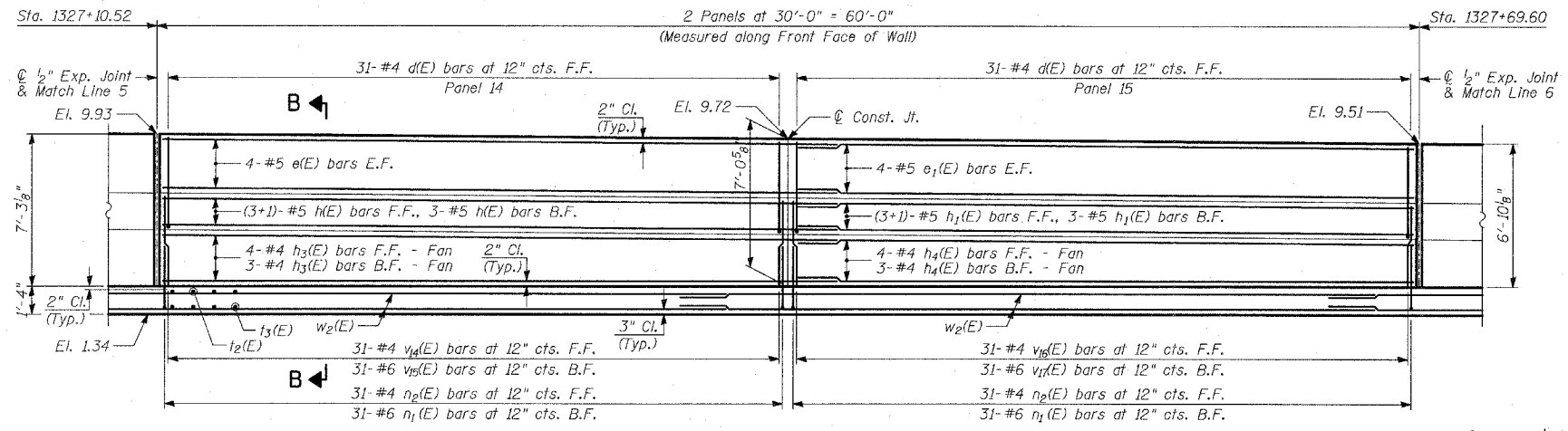
F.A.I. RTE.	SECTION	COUNTY	TOTAL SHEETS	SHEET NO.
94	*	COOK	907	614
STA. 1200+00.00 TO STA. 1365+00				
FED. ROAD DIST. NO.		ILLINOIS	FED. AID PROJECT	
(1516.1, 1717 & 1818) R-9		62695		



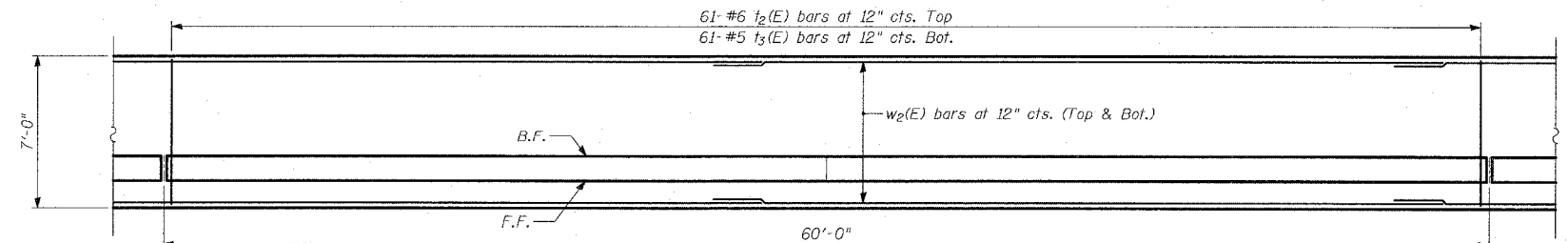
ELEVATION



PLAN



ELEVATION



PLAN

- NOTES:**
1. B.F. - denotes Back Face.
 2. E.F. - denotes Each Face.
 3. F.F. - denotes Front Face.
 4. Work this Sheet with Sheets 9, 13, 15 and 16 of 25.
 5. Pile spacing measured along front face of wall.
 6. For Lap Splices, see Sheet 9 of 25.

TYLIN INTERNATIONAL

REVISIONS	
NAME	DATE

ILLINOIS DEPARTMENT OF TRANSPORTATION
 F.A.I. 94 (DAN RYAN EXPRESSWAY)
 RETAINING WALL ALONG LAFAYETTE AVE.
 77TH PL. TO 78TH ST.
 WALL 73B - PLAN AND ELEVATION
 STA. 1326+21.84 TO STA. 1327+69.60
 S.N. 016-W973 DESIGNED BY: TD
 SCALE: N.T.S. DRAWN BY: SNB
 DATE: MARCH 25, 2005 CHECKED BY: TD, MI