

Benchmarks: BM 3514 Set "+" on chain bolt of hydrant at southwest intersection of LaSalle St. and 97th St. El. 17.56

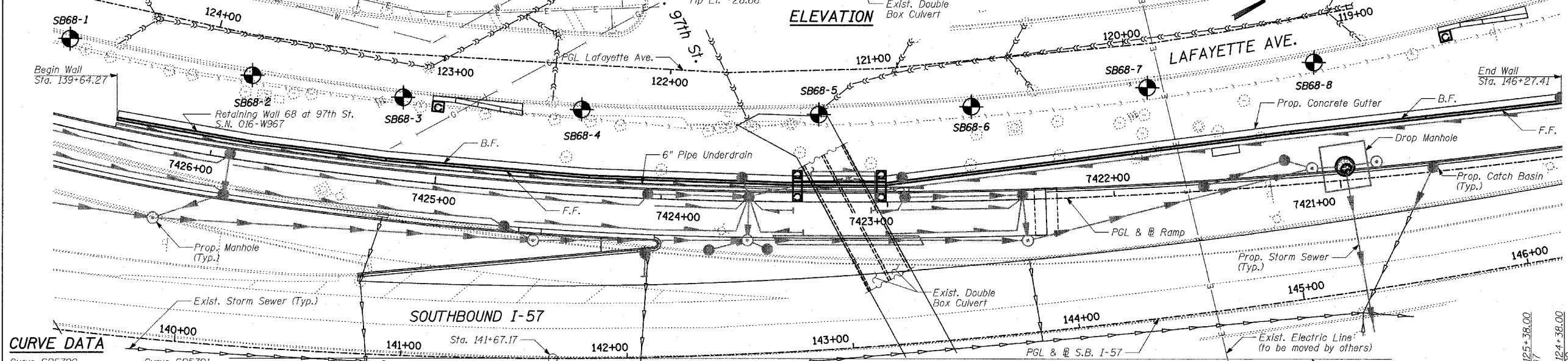
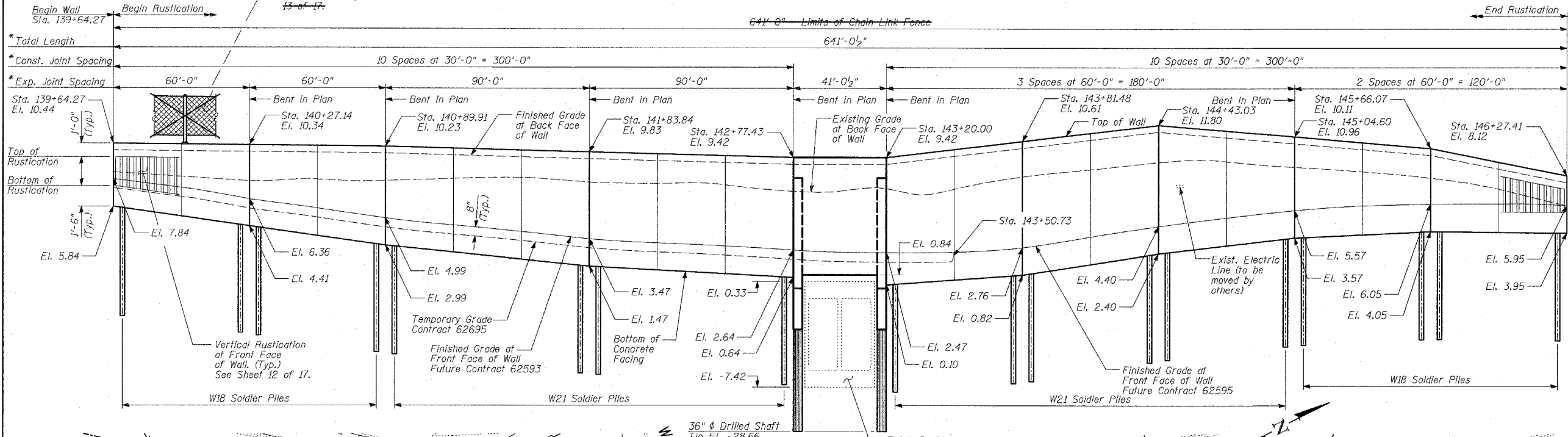
Existing Structure: None.

Chain Link Fence, 42" Attached to Structure (Special). See Sheet 13 of 17.

F.A.I. RTE.	SECTION	COUNTY	TOTAL SHEETS	SHEET NO.
94		COOK	907	654
STA. 1200+00.00 TO STA. 1365+00				
FED. ROAD DIST. NO. ILLINOIS FED. AID PROJECT				
• (1516.1, 1717 & 1818) R-9				

TOTAL BILL OF MATERIAL 62695

ITEM	UNIT	TOTAL
Porous Granular Embankment	CU YD	169
Structure Excavation	CU YD	529
Concrete Structures	CU YD	229
Protective Coat	SQ YD	547
Rustication Finish	SQ FT	3,314
Stud Shear Connectors	EACH	750
Untreated Timber Lagging	SQ FT	3,347
Furnishing Soldier Piles (W Section)	FOOT	2,626
Reinforcement Bars, Epoxy Coated	POUND	32,040
Geocomposite Wall Drain	SQ YD	439
Pipe Underdrains for Structures, 6"	FOOT	642
Drilling and Setting Soldier Piles (in Soil)	CU FT	12,754
Drilled Shaft in Soil 36"	FOOT	102
Chain Link Fence, 42" Attached to Structure (Special)	FOOT	641



CURVE DATA

Curve	SB5700	SB5701
Δ	66° 11' 55.15" (Lt.)	24° 02' 7.49" (Lt.)
D	3° 02' 10.83"	1° 58' 30.13"
R	1,887.00	2,901.00
L	2,180.21	1,216.96
E	365.53	65.01
T	1,230.09	617.56
PC	Sta. 121+39.97	Sta. 143+20.18
PT	Sta. 133,70.06	Sta. 149+37.75
PT	Sta. 143+20.18	Sta. 155+37.15

GENERAL NOTES:

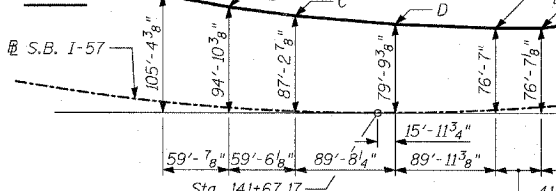
1. Reinforcement bars shall conform to the requirements of AASHTO M31 or M322 Grade 60.
2. Plan dimensions and details relative to existing structure have been taken from existing plans and are subject to nominal construction variations. It shall be the Contractor's responsibility to verify such dimensions and details in the field and make necessary approved adjustments prior to construction or ordering of materials. Such variations shall not be cause for additional compensation for a change in the scope of the work; however, the Contractor will be paid for the quantity actually finished at the unit price bid for the work.
3. The Contractor is responsible for the design and performance of the lagging using no less than 3" nominal rough-sawn thickness and the minimum tabulated unit stress in bending (f_b), used in the design of timber lagging shall be 1000 psi.
4. The soldier piles shall be cleaned and given one shop coat of Inorganic Zinc-Rich primer.
5. All exposed concrete edges shall be chamfered 3/8" except as noted.
6. Protective Coat shall be applied to exposed surfaces of the concrete facing.
7. Existing utilities in conflict with soldier pile wall construction shall be abandoned or relocated according to directions given on the roadway plans.
8. All construction joints shall be bonded.
9. All elevations shown are based on the Chicago City Datum of 0.00, which is 579.19 feet above mean tide New York. (NAVD 88)
10. The wall shall be backfilled (where applicable) prior to placing the concrete facing.
11. The Contractor is responsible to coordinate all electrical crossings with this Contract and with Contract 62583.
12. It is the Contractor's responsibility to verify the location of the existing double box culvert and report any discrepancies to the Engineer prior to drilling.

DESIGN SPECIFICATION
AASHTO 2002 Standard Specifications for Highway Bridges

DESIGN STRESSES
FIELD UNITS
 $f'_c = 3,500$ psi
 $f_y = 60,000$ psi (Reinforcement)
 $f_y = 36,000$ psi (M270 Grade 36)
Soldier Piles

TYLIN INTERNATIONAL

PLAN

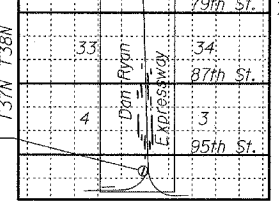


INDEX OF SHEETS

1. GENERAL PLAN
2. PLAN AND ELEVATION STA. 139+64.27 TO STA. 140+89.91
3. PLAN AND ELEVATION STA. 140+89.91 TO STA. 142+77.43
4. PLAN AND ELEVATION STA. 142+77.43 TO STA. 144+43.03
5. PLAN AND ELEVATION STA. 144+43.03 TO STA. 145+66.07
6. PLAN AND ELEVATION STA. 145+66.07 TO STA. 146+27.41
7. FILE LAYOUT, DETAILS & BILL OF MATERIAL
8. PLAN AND ELEVATION STA. 142+77.43 TO STA. 143+20.00
9. SADDLE SECTION AND DETAILS 1
10. SADDLE SECTION AND DETAILS 2
11. WALL CROSS SECTIONS & DETAILS
12. RUSTICATION DETAILS
13. CHAIN LINK FENCE, 42" ATTACHED TO STRUCTURE (SPECIAL)
14. BORING LOGS SB68-01 & SB68-02
15. BORING LOGS SB68-03 & SB68-04
16. BORING LOGS SB68-05 & SB68-06
17. BORING LOGS SB68-07 & SB68-08

OFFSET SKETCH

Point	Sta.	Offset to S.B. I-57
A	139+64.27	95'-0 1/8" Lt.
B	140+27.14	89'-11" Lt.
C	140+89.91	85'-8 3/4" Lt.
D	141+83.84	79'-8 1/2" Lt.
E	142+77.43	73'-5 7/8" Lt.
F	143+20.00	70'-7 1/2" Lt.
G	145+04.60	73'-5" Lt.
H	146+27.41	67'-0 7/8" Lt.

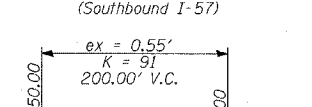


LOCATION SKETCH

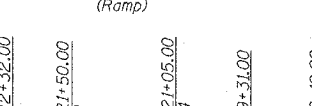
LEGEND

- Boring Location
- Measured along Front Face of Wall.

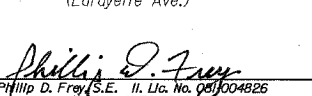
PROFILE GRADE (Southbound I-57)



PROFILE GRADE (Ramp)



PROFILE GRADE (Lafayette Ave.)



Signed: *Phillip D. Frey*
Phillip D. Frey, S.E., Ill. Lic. No. 081-004826
Expires 11-30-2008.
Date: 3/25/05

REVISIONS	NAME	DATE
REVIS		
REVIS		

ILLINOIS DEPARTMENT OF TRANSPORTATION
F.A.I. 94 (DAN RYAN EXPRESSWAY)
RETAINING WALL ALONG LAFAYETTE AVE.
AT 97TH ST.
STA. 139+64.27 TO STA. 146+27.41
S.N. 016-W967
SCALE: N.T.S.
DATE: MARCH 25, 2005

DESIGNED BY: MI, DJR
DRAWN BY: DJR
CHECKED BY: TD, MI