

Wang Engineering, INC.
 Consulting Geotechnical and Environmental Engineers
 wangeng3@wangeng.com
 1145 Main Street
 Lombard, IL 60148
 Telephone: 630 953-9928
 Fax: 630 953-9938

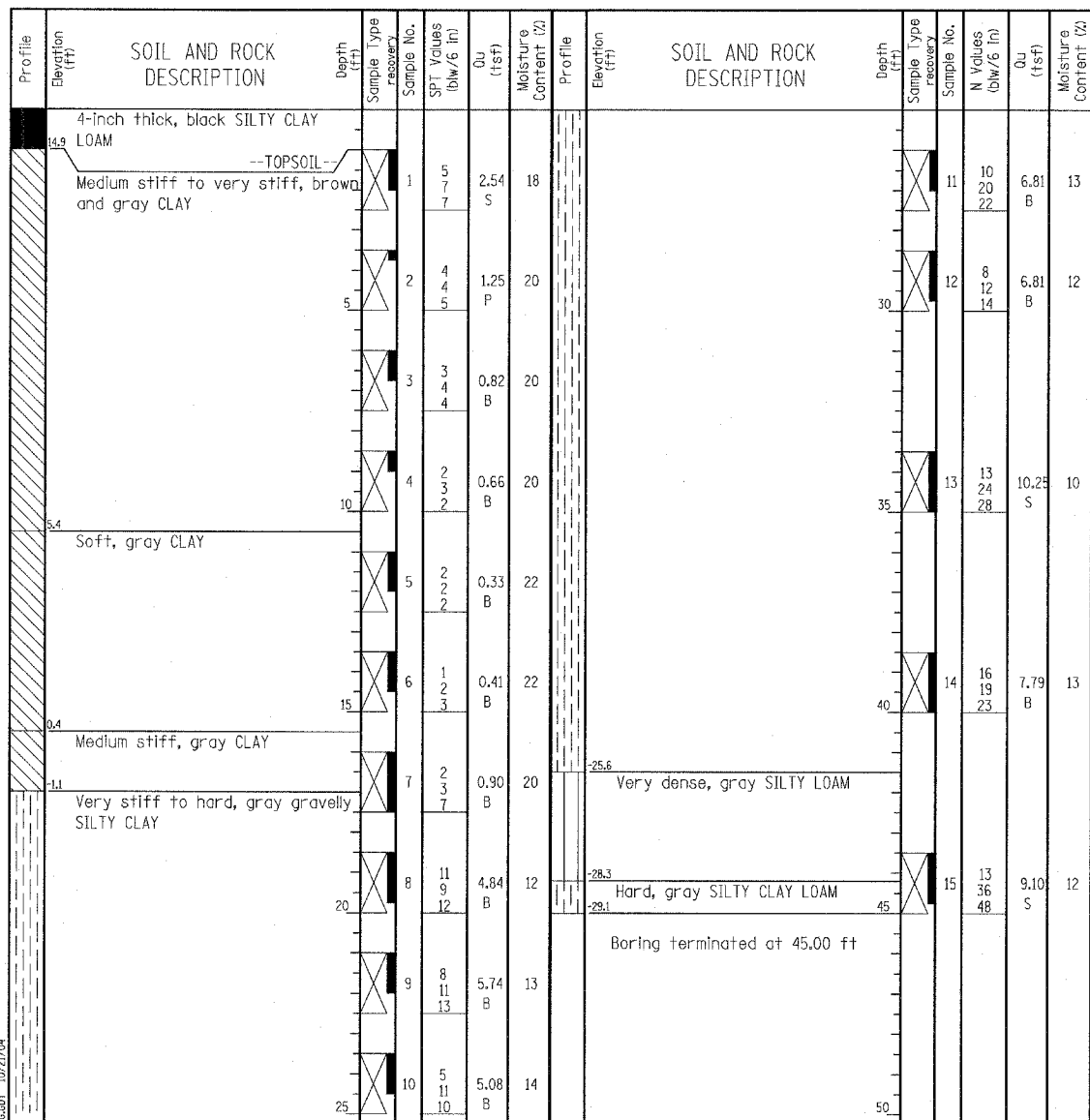
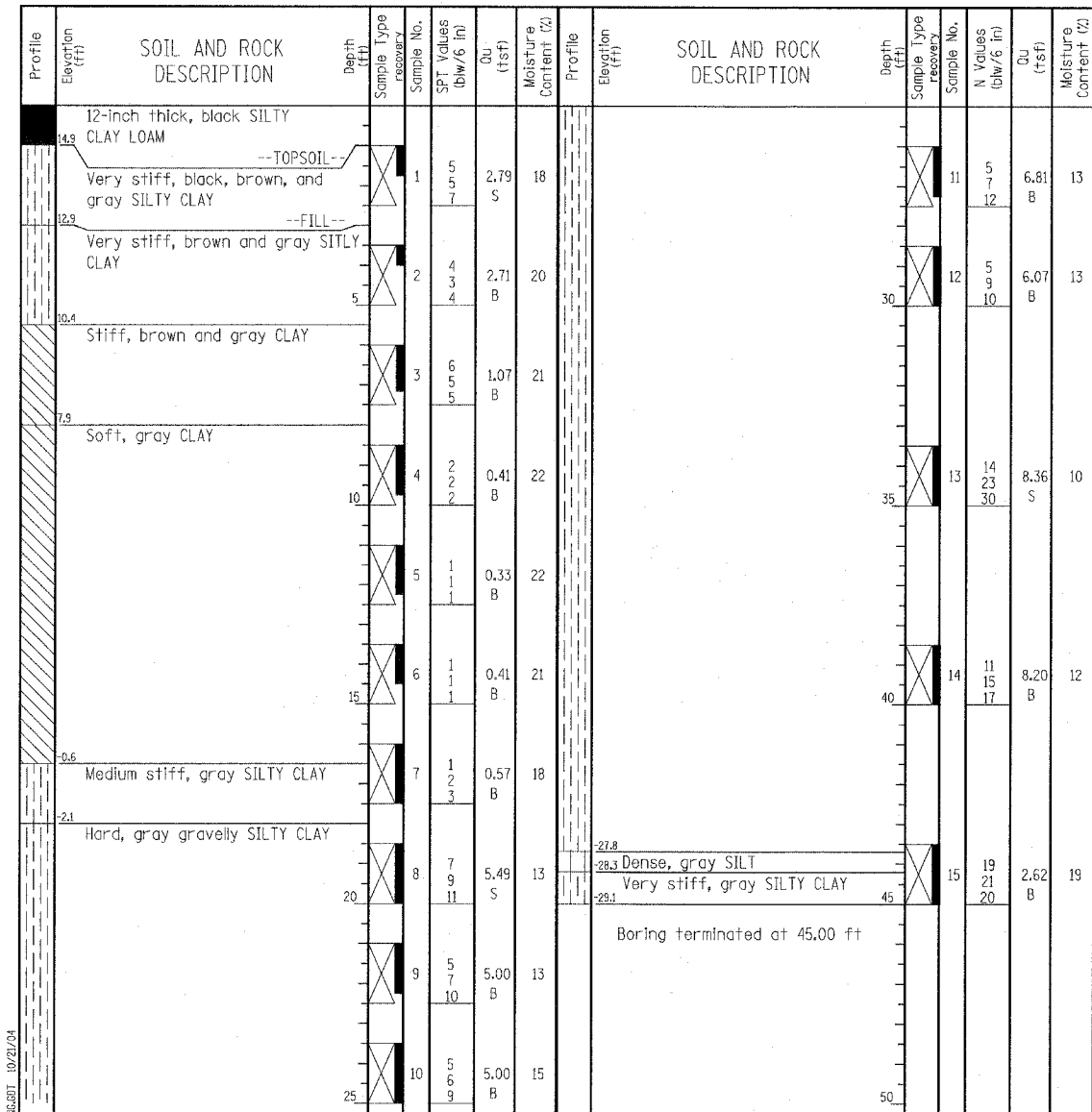
BORING LOG SB 68-07
 WEI Job No.: 414-07-01
 Datum: CCD
 Elevation: 15.89 ft
 North: 1840807.89 ft
 East: 1177471.46 ft
 Station: 144+42.64
 Offset: 102 LT

Client: T. Y. LIN International
 Project: Dan Ryan Improvements; IDOT No. D-91-421-01
 Location: From 95th Street to South of 69th Street

Wang Engineering, INC.
 Consulting Geotechnical and Environmental Engineers
 wangeng3@wangeng.com
 1145 Main Street
 Lombard, IL 60148
 Telephone: 630 953-9928
 Fax: 630 953-9938

BORING LOG SB 68-08
 WEI Job No.: 414-07-01
 Datum: CCD
 Elevation: 15.87 ft
 North: 1840878.65 ft
 East: 1177494.29 ft
 Station: 145+19.70
 Offset: 103 LT

Client: T. Y. LIN International
 Project: Dan Ryan Improvements; IDOT No. D-91-421-01
 Location: From 95th Street to South of 69th Street



| GENERAL NOTES | | | | WATER LEVEL DATA | | | |
|---|---|-------------------|------------|---------------------------|----|-----|--|
| Begin Drilling | 07-13-2004 | Complete Drilling | 07-13-2004 | While Drilling | ▽ | DRY | |
| Drilling Contractor | Patrick Drilling | Drill Rig | CME 75 TMR | At Completion of Drilling | ▽ | DRY | |
| Driller | K&A | Logger | J. Kasnick | Time After Drilling | NA | | |
| Drilling Method | 3.25" ID. HSA; Boring backfilled with bentonite upon completion | | | Depth to Water | ▽ | NA | |
| The stratification lines represent the approximate boundary between soil types; the actual transition may be gradual. | | | | | | | |

| GENERAL NOTES | | | | WATER LEVEL DATA | | | |
|---|---|-------------------|------------|---------------------------|----|-----|--|
| Begin Drilling | 07-13-2004 | Complete Drilling | 07-13-2004 | While Drilling | ▽ | DRY | |
| Drilling Contractor | Patrick Drilling | Drill Rig | CME 75 TMR | At Completion of Drilling | ▽ | DRY | |
| Driller | K&A | Logger | J. Kasnick | Time After Drilling | NA | | |
| Drilling Method | 3.25" ID. HSA; Boring backfilled with bentonite upon completion | | | Depth to Water | ▽ | NA | |
| The stratification lines represent the approximate boundary between soil types; the actual transition may be gradual. | | | | | | | |

TYLIN INTERNATIONAL

| REVISIONS | |
|-----------|------|
| NAME | DATE |
| | |
| | |
| | |
| | |
| | |
| | |

ILLINOIS DEPARTMENT OF TRANSPORTATION
 F.A.I. 94 (DAN RYAN EXPRESSWAY)
 RETAINING WALL ALONG LAFAYETTE AVE.
 AT 97TH ST.
 WALL 68
 BORING LOGS SB68-07 & SB68-08
 S.N. 016-W967
 SCALE: N.T.S.
 DATE: MARCH 25, 2005

DESIGNED BY: DJR
 DRAWN BY: DJR
 CHECKED BY: TD