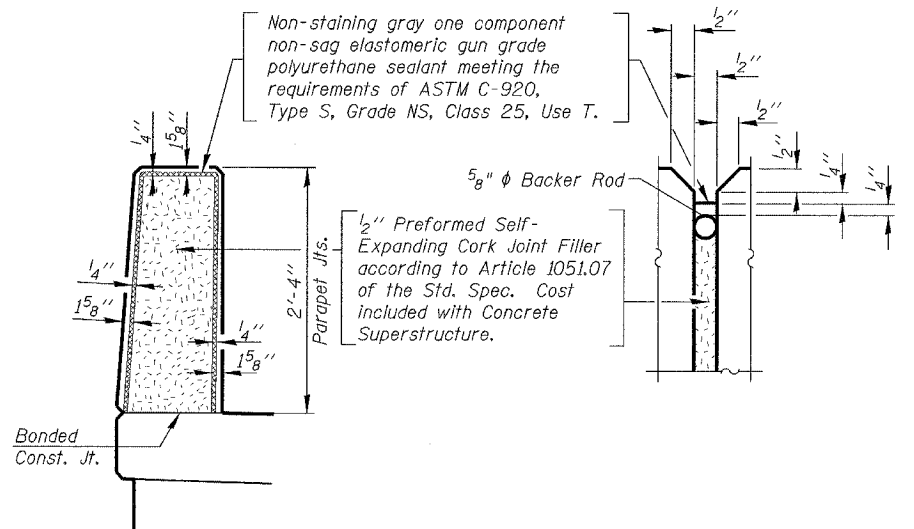


**PLAN - DECK POURING SEQUENCE**

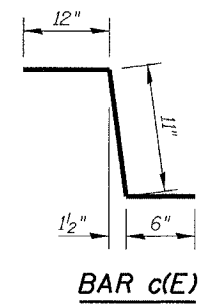
**Notes:**

When the deck pour is stopped for the day, at one or more of the transverse Bonded Construction Joints in the deck Pouring Sequence as shown, the next pour shall not be made until both of the following requirements are met.

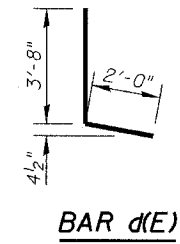
1. At least 72 hours shall have elapsed from the end of the previous pour.
2. The concrete strength shall have attained a minimum flexural strength of 650 psi or a minimum compressive strength of 3500 psi.



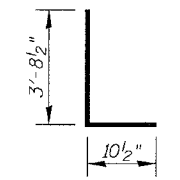
**PARAPET JOINT DETAILS**



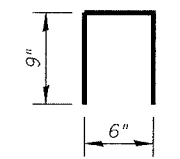
**BAR c(E)**



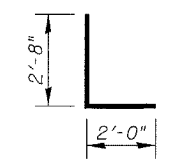
**BAR d(E)**



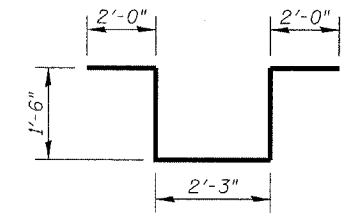
**BAR d1(E)**



**BAR d2(E)**



**BAR d3(E)**



**BAR d4(E)**

**BILL OF MATERIAL**

BAR	NO.	SIZE	LENGTH	SHAPE
a(E)	2024	#5	22'-6"	—
a1(E)	1103	#5	24'-6"	—
a2(E)	80	#5	2'-0"	—
a3(E)	367	#5	16'-0"	—
b(E)	1166	#5	27'-0"	—
b1(E)	996	#5	25'-0"	—
b2(E)	249	#6	31'-0"	—
c(E)	548	#5	2'-5"	—
c1(E)	548	#5	8'-2"	—
d(E)	574	#4	5'-8"	—
d1(E)	574	#6	4'-7"	—
d2(E)	148	#4	2'-0"	—
d3(E)	18	#6	4'-8"	—
d4(E)	36	#6	9'-3"	—
e(E)	96	#4	17'-0"	—
e1(E)	80	#4	17'-8"	—
e2(E)	32	#4	10'-8"	—
e3(E)	16	#4	19'-8"	—
e4(E)	32	#4	10'-2"	—
e5(E)	16	#4	15'-10"	—
Reinforcement Bars, Epoxy Coated			LB	168,240
Concrete Superstructure			Cu. Yd.	784
Bridge Deck Grooving			Sq. Yd.	1943
Protective Coat			Sq. Yd.	2697

**Notes:**

Work this DWG. with DWGS. S-09 thru S-12.  
Reinforcement Bars designated (E) shall be epoxy coated.

REVISIONS	
NAME	DATE

ILLINOIS DEPARTMENT OF TRANSPORTATION  
**DECK MISCELLANEOUS DETAILS**  
76TH STREET OVER FAI-94  
FAP ROUTE 1541 SECTION 1818 R-9  
COOK COUNTY  
STATION 73+49.33  
STRUCTURE NUMBER 016-2850  
SCALE: NONE  
DATE: March 25, 2005  
DESIGNED BY: TB  
CHECKED BY: WPM  
DRAWN BY: TL  
CHECKED BY: WPM

DWG. S-13 of 42



FILE: L:\65592.02\Loc\1\Sheets\Roadway Structures\BRIDGE\65592-SP850-BK05.dgn