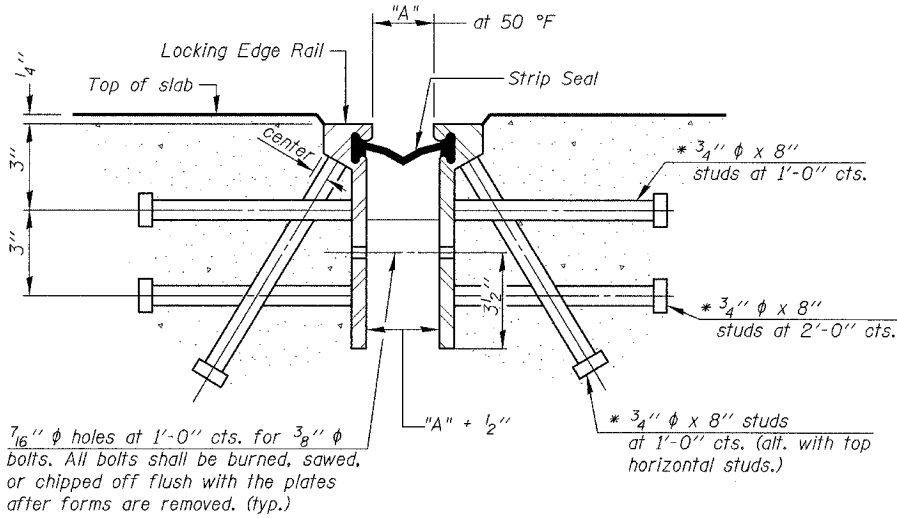
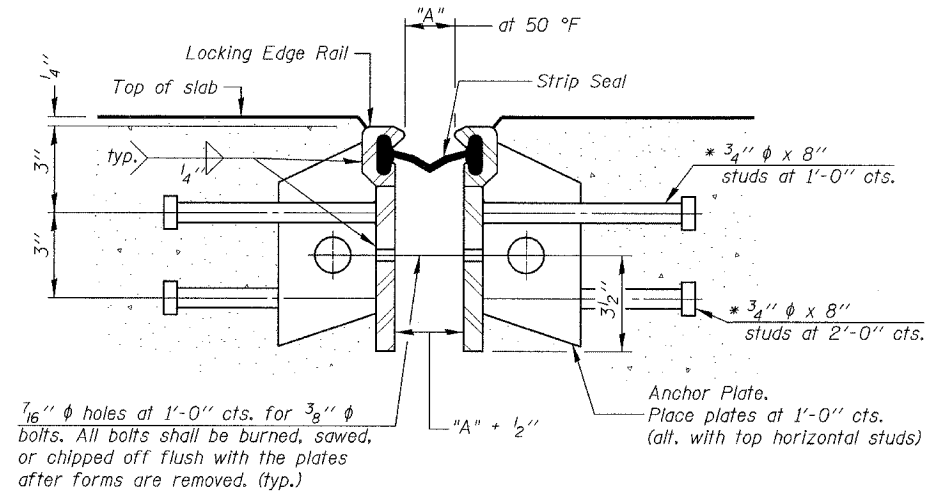


F.A.I. RTE.	SECTION	COUNTY	TOTAL SHEETS	SHEET NO.
94	*	COOK	907	685
STA.		TO STA.		
FED. ROAD DIST. NO.		ILLINOIS FED. AID PROJECT		
(1516.1, 1717 & 1818) R-9		62695		



Required Strip Seal rated movement	"A"
1"	1 1/8"
2"	1 3/4"



GENERAL NOTES

The strip seal shall be made continuous and shall have a minimum thickness of 1/4". The configuration of the strip seal shall match the configuration of the Locking Edge Rails.

The height and thickness of the Locking Edge Rails shown are minimum dimensions. The actual configuration of the Locking Edge Rails and matching strip seal may vary from manufacturer to manufacturer. Flanged edge rails will not be allowed.

Locking Edge Rails may be spliced at slope discontinuities and stage construction joints.

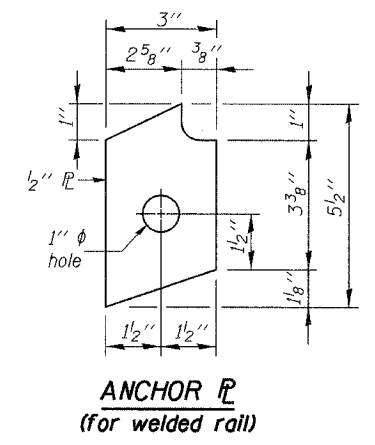
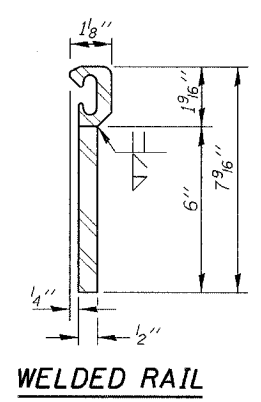
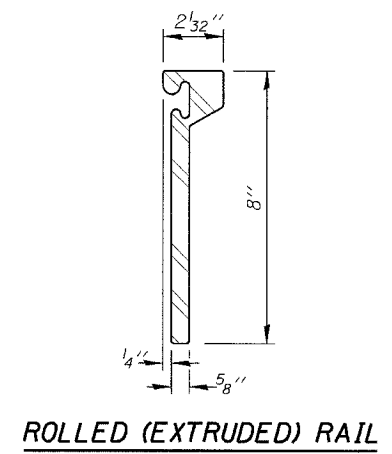
The manufacturer's recommended installation methods shall be followed.

The joint opening and deck dimensions detailed on the superstructure are based on a preformed joint seal. If the contractor elects to use the alternate strip seal joint, the opening and deck dimensions shall be modified according to the dimensions detailed on this sheet. Required modifications shall be made at no additional cost to the State.

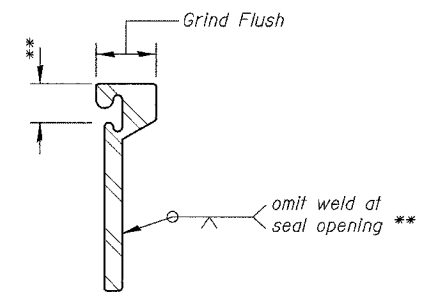
SECTION THRU ROLLED RAIL EXP. JOINT
(856 Studs Required)

SECTION THRU WELDED RAIL EXP. JOINT
(516 Studs Required)
(340 Anchor Plates Required)

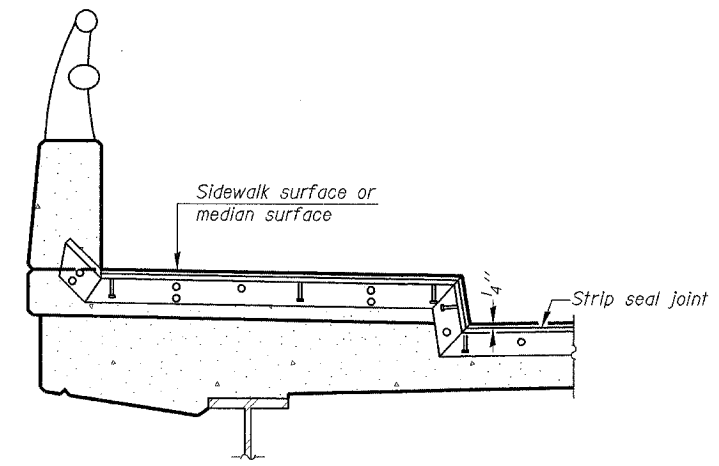
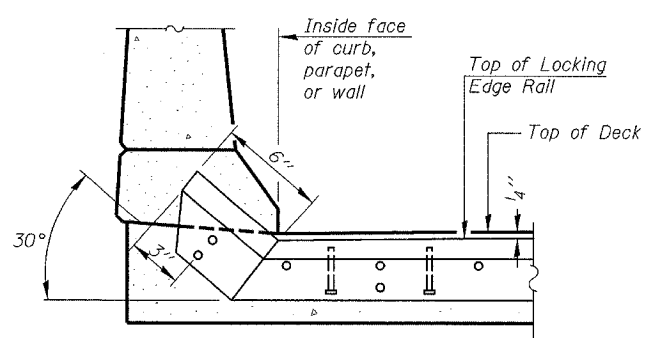
* Granular or solid flux filled headed studs conforming to Article 1006.32 of the Std. Specs., automatically end welded.



LOCKING EDGE RAILS



The inside of the locking edge rail groove shall be free of weld residue.



BILL OF MATERIAL

Item	Unit	Total
Strip Seal Expansion Joint Assembly	foot	167

DWG. S-15 of 42

REVISIONS		ILLINOIS DEPARTMENT OF TRANSPORTATION DECK EXPANSION JOINT - STRIP SEAL 76TH STREET OVER FAI-94 FAP ROUTE 1541 SECTION 1818 R-9 COOK COUNTY STATION 73+49.33 STRUCTURE NUMBER 016-2850
NAME	DATE	
		SCALE: NONE
		DESIGNED BY: TB DRAWN BY: TL
		DATE: March 25, 2005 CHECKED BY: WPM CHECKED BY: WPM

EJ-BJS 9-01-03

KNIGHT
Engineers & Architects

AT CURB, PARAPET, OR WALL

AT SIDEWALK OR MEDIAN*

TYPICAL END TREATMENTS

* Shorter plates with a single row of studs at 12" centers may be necessary on medians which are shallower than 9". See manufacturer's recommendation.

FILE: L:\6592\021\Cad\Sheet\Roadway\Structures\Bridges\6592-32950-E.dwg